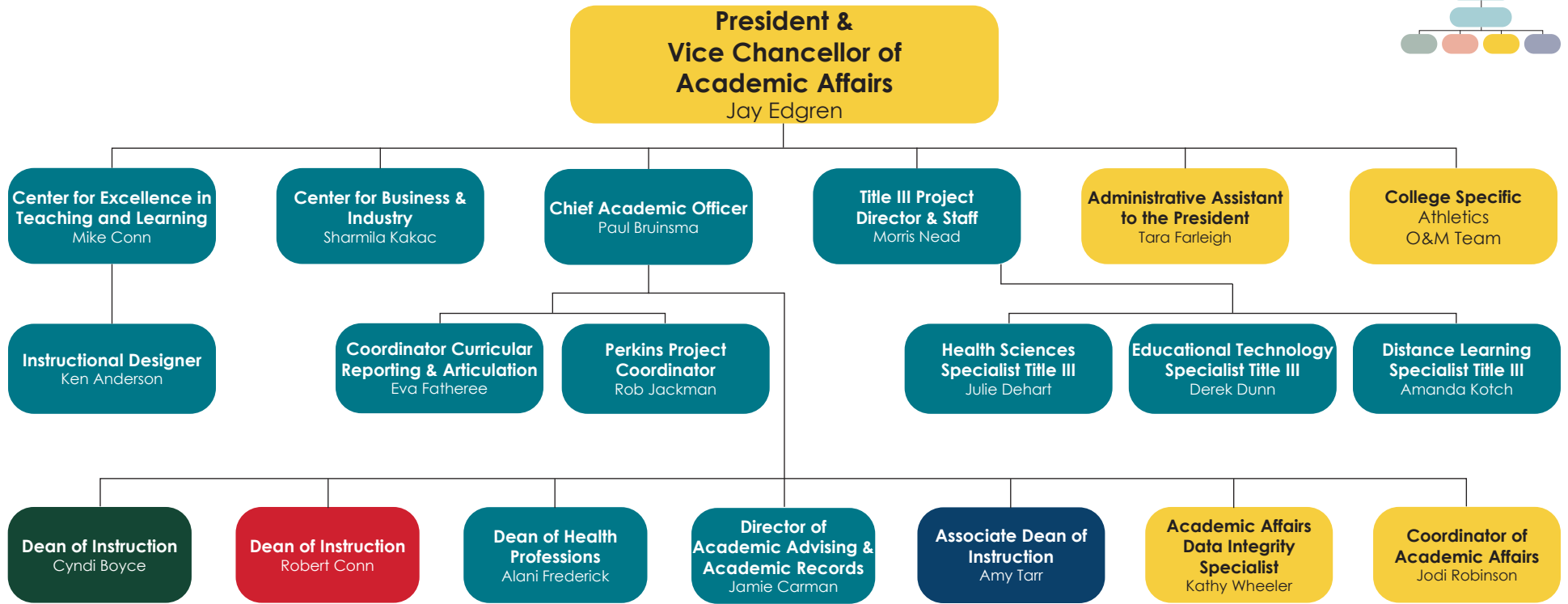
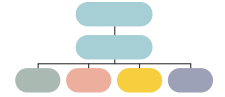
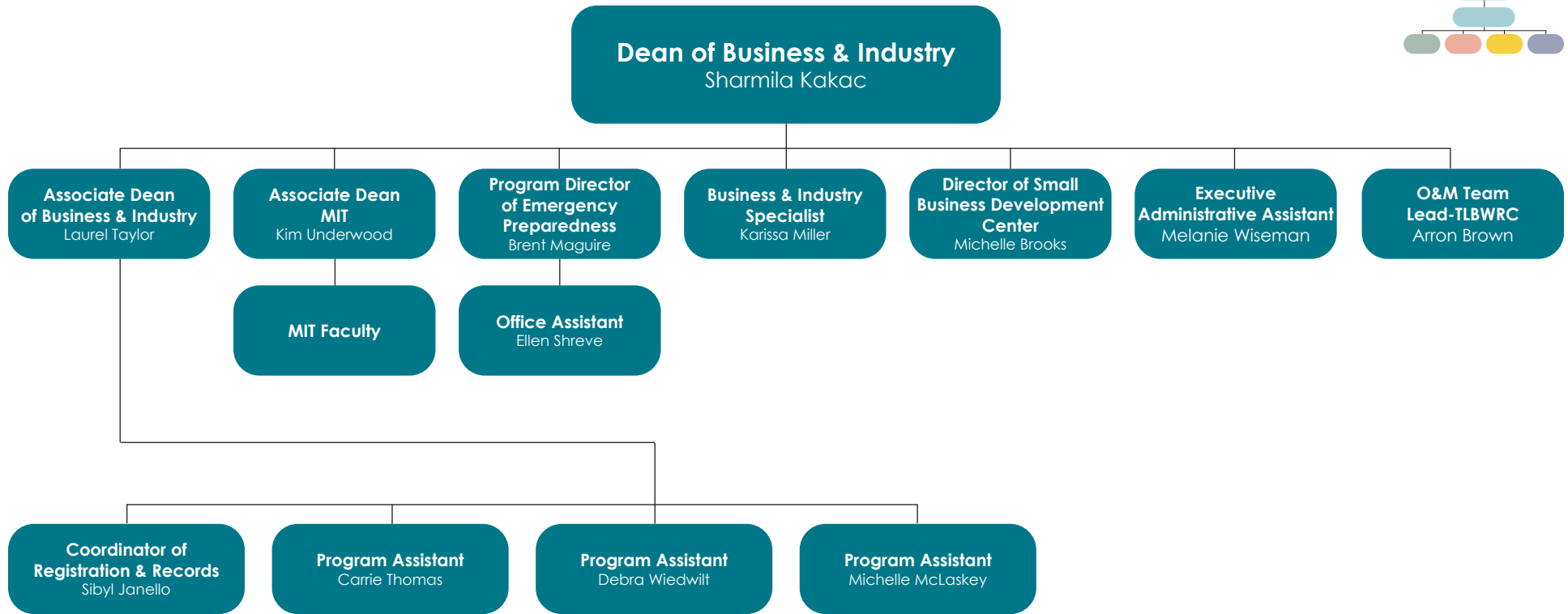
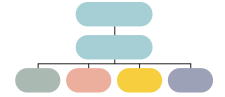


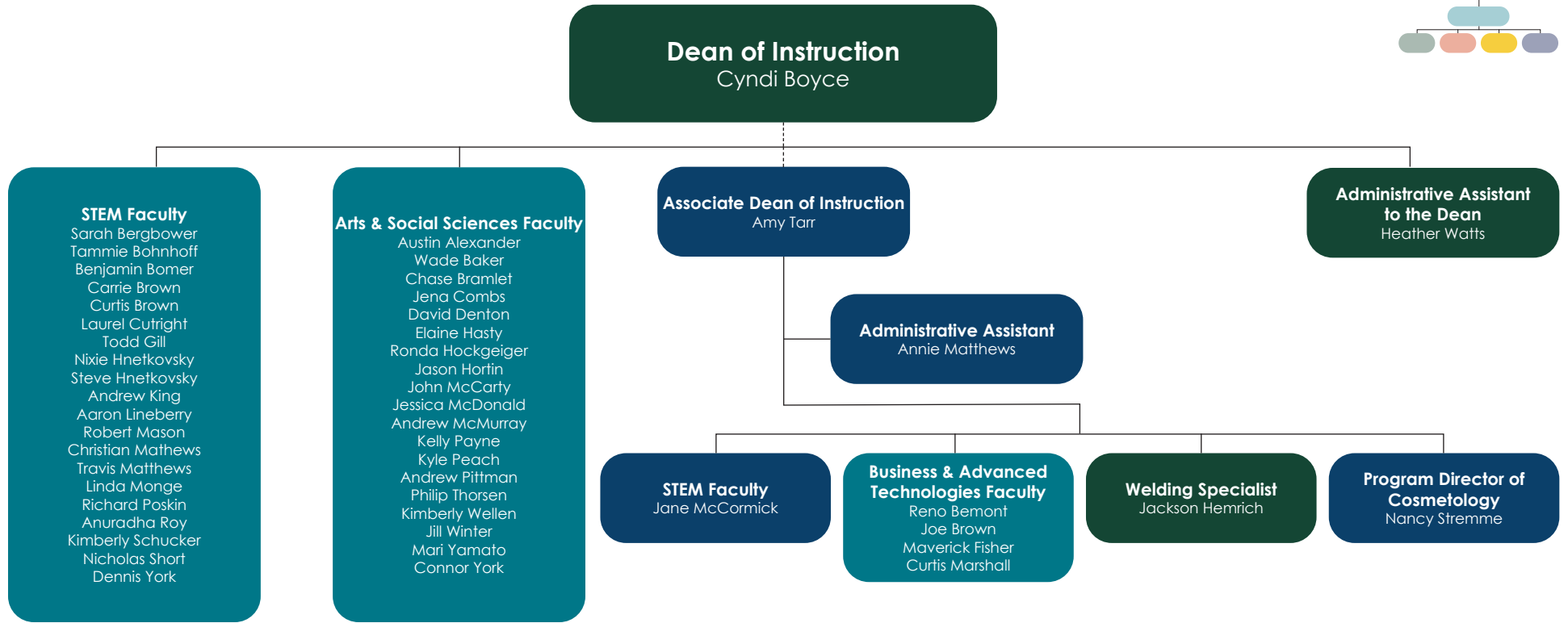
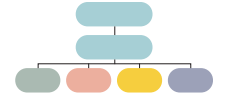
ILLINOIS EASTERN COMMUNITY COLLEGES Administrative Organizational Chart



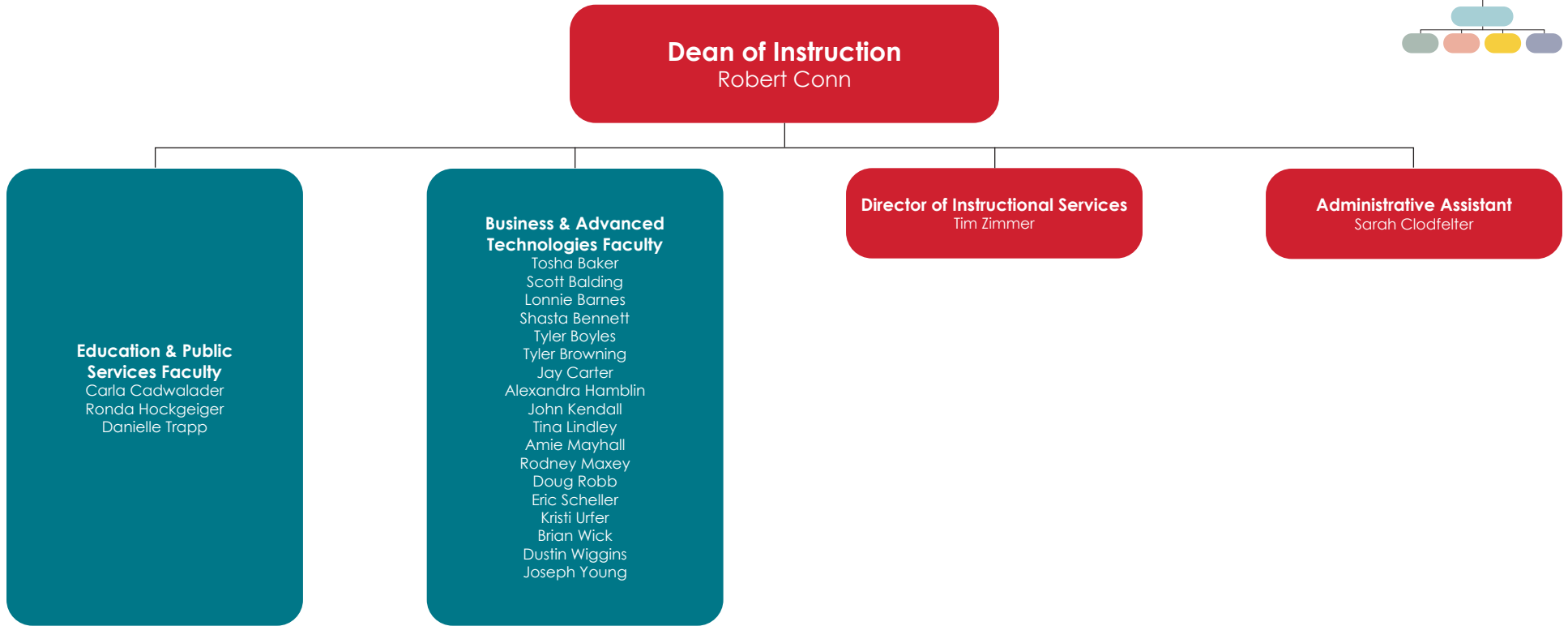
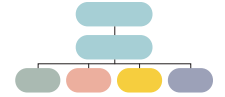
ILLINOIS EASTERN COMMUNITY COLLEGES Administrative Organizational Chart



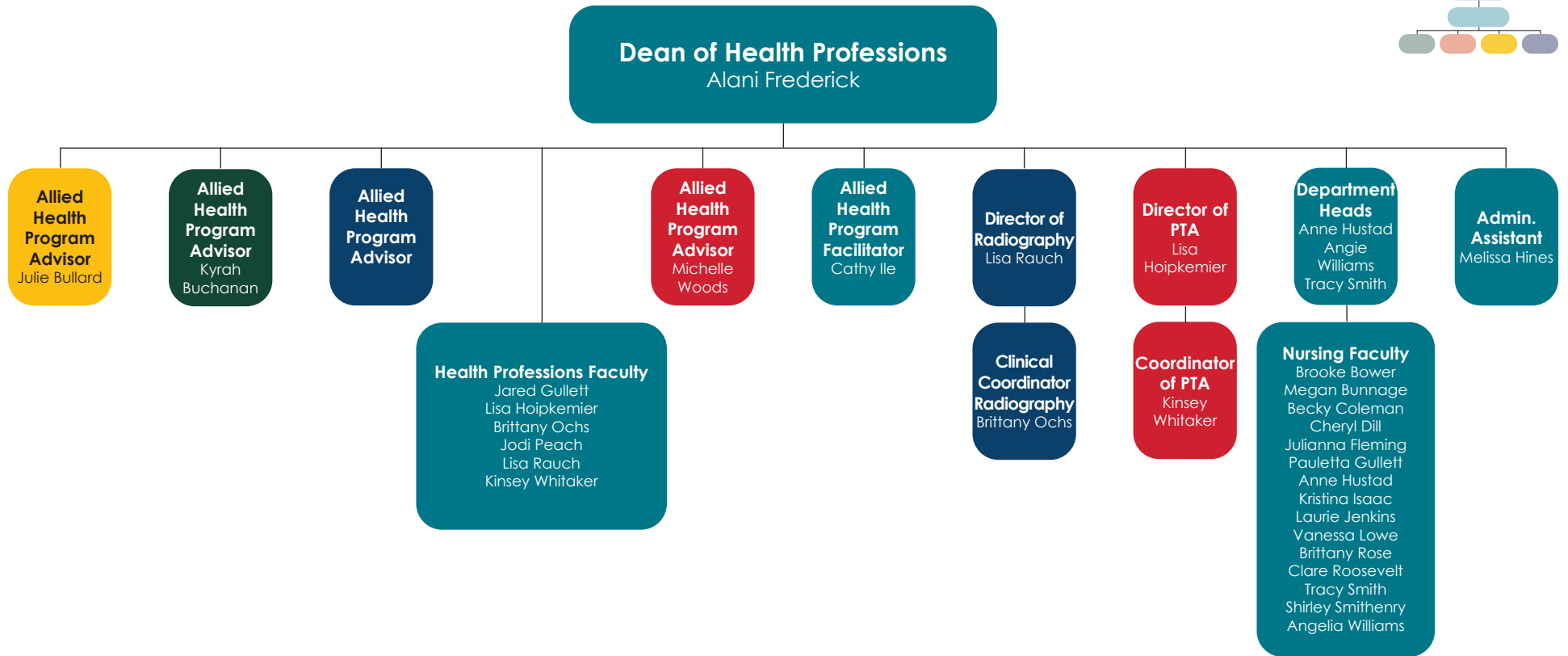
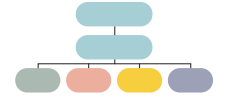
ILLINOIS EASTERN COMMUNITY COLLEGES Administrative Organizational Chart

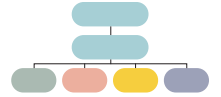


ILLINOIS EASTERN COMMUNITY COLLEGES Administrative Organizational Chart



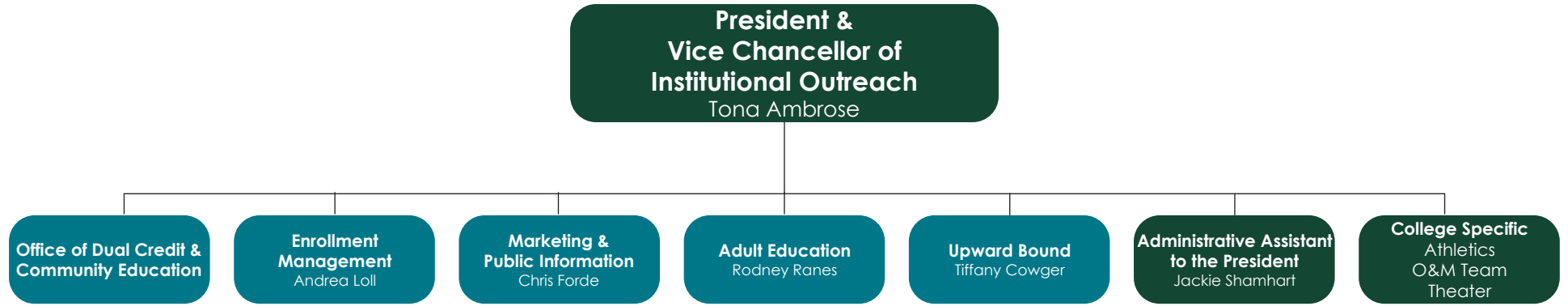
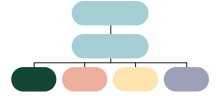
ILLINOIS EASTERN COMMUNITY COLLEGES Administrative Organizational Chart

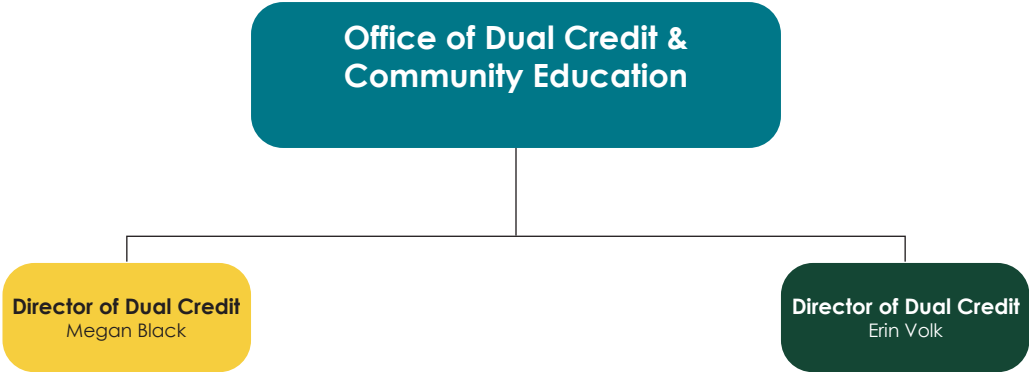
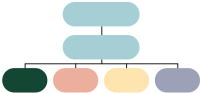


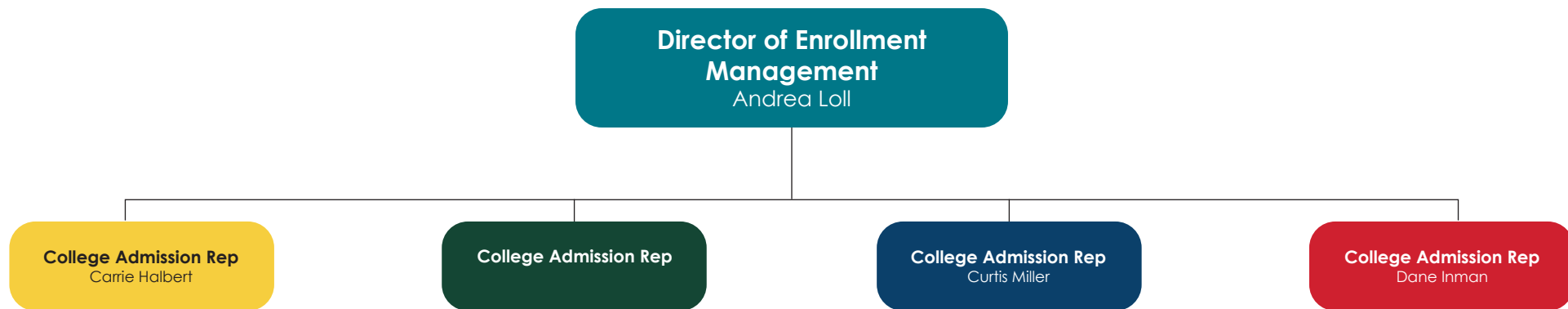


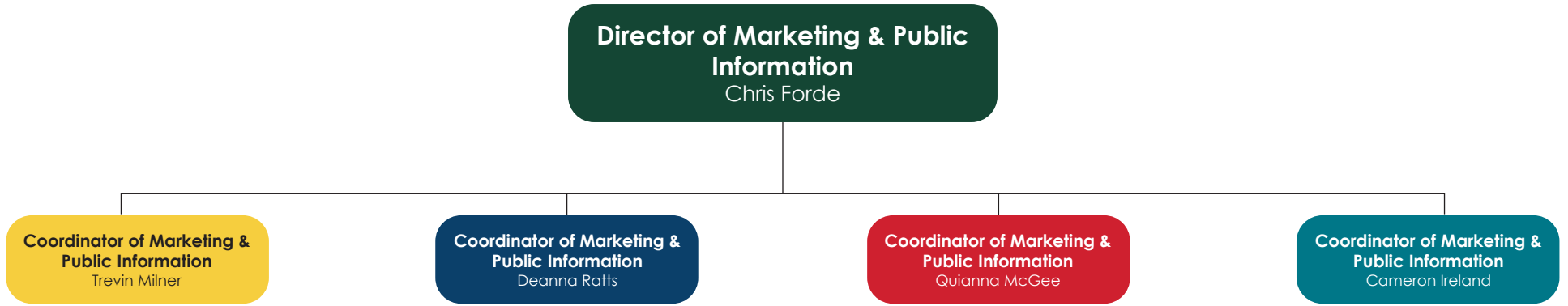
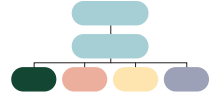
**Director of Academic Advising
and Academic Records**
Jamie Carman

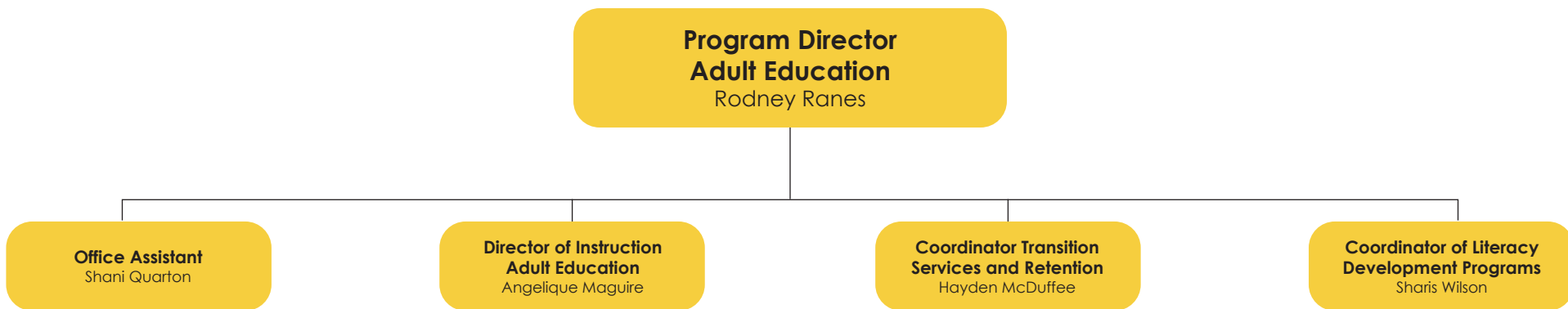


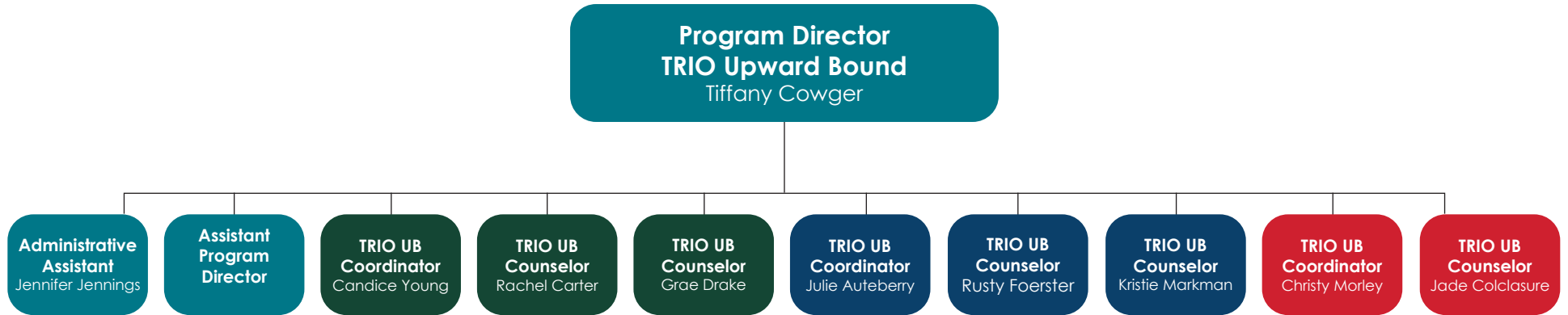
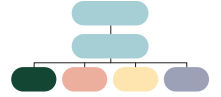


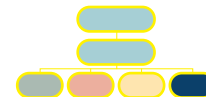












**President &
Vice Chancellor of
Business Operations**
Chris Simpson

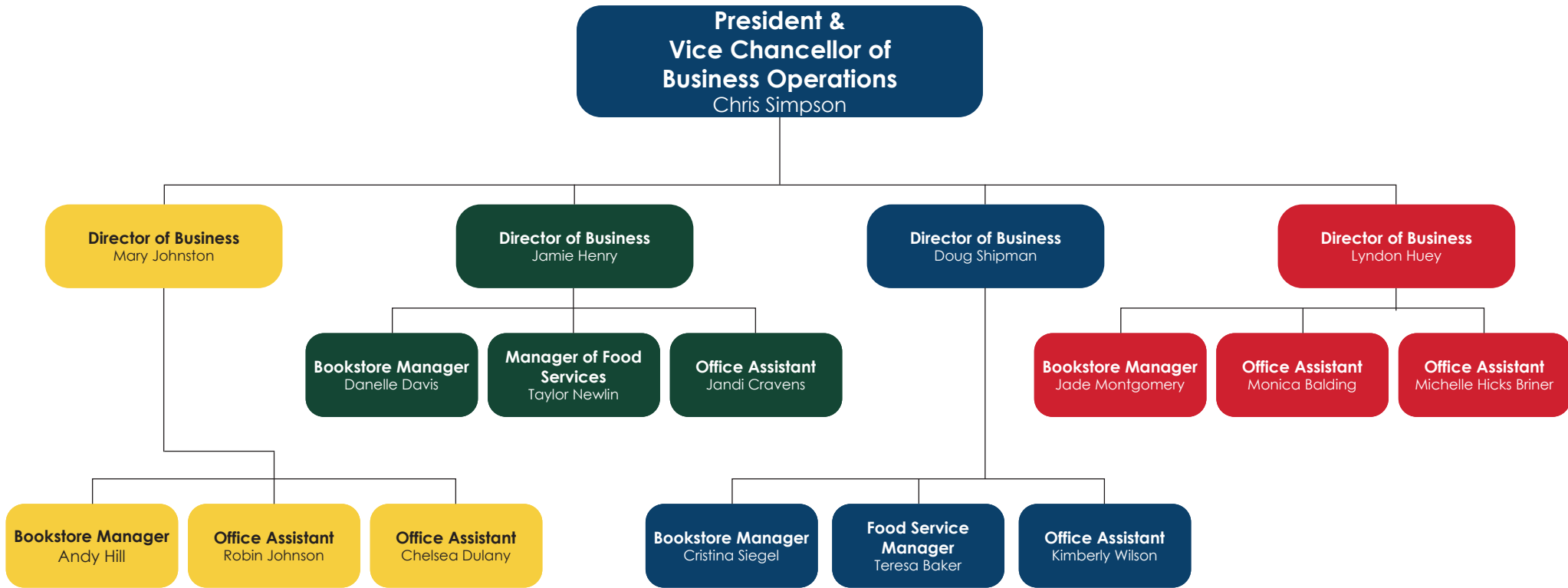
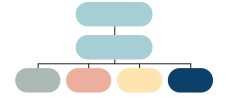
Business Offices

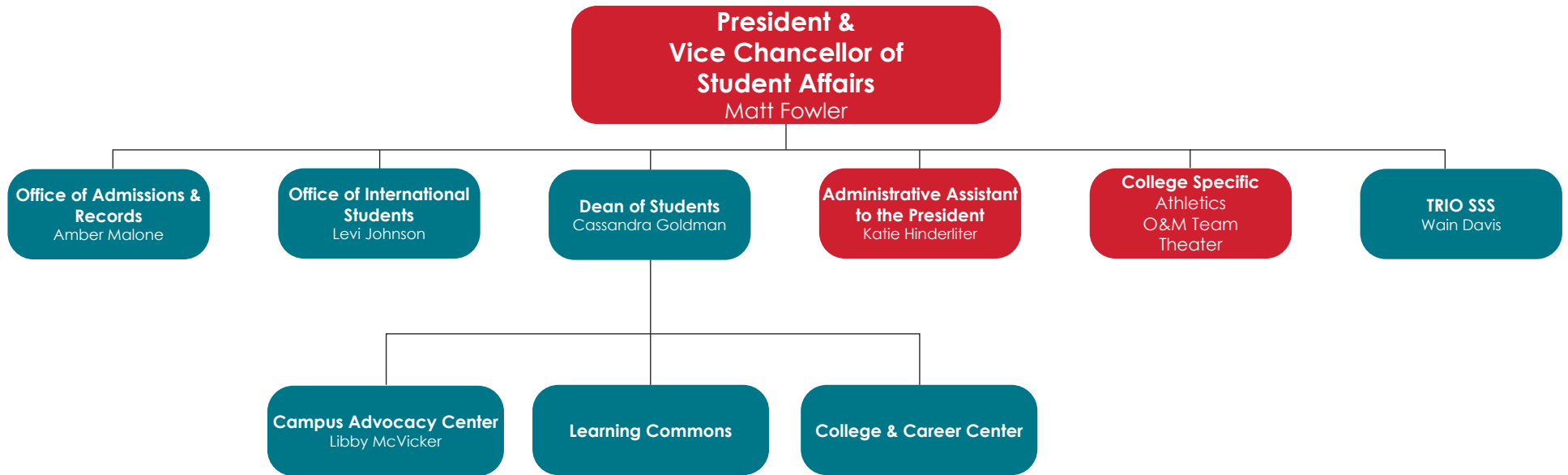
District Athletic Director
Tyler Browning

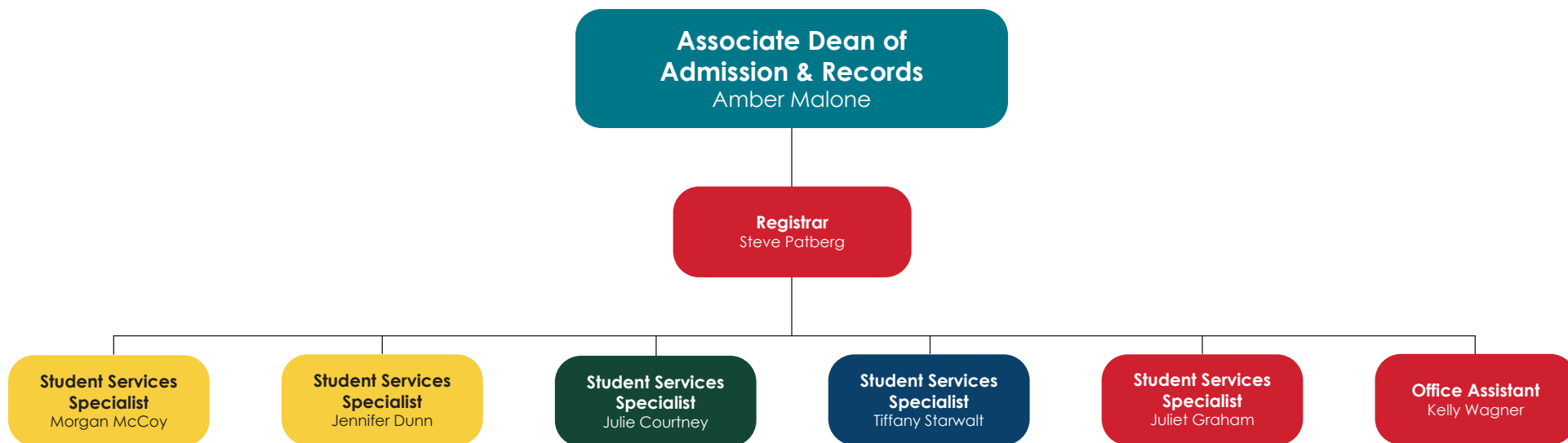
**Administrative Assistant to the
President**
Lynne Welker

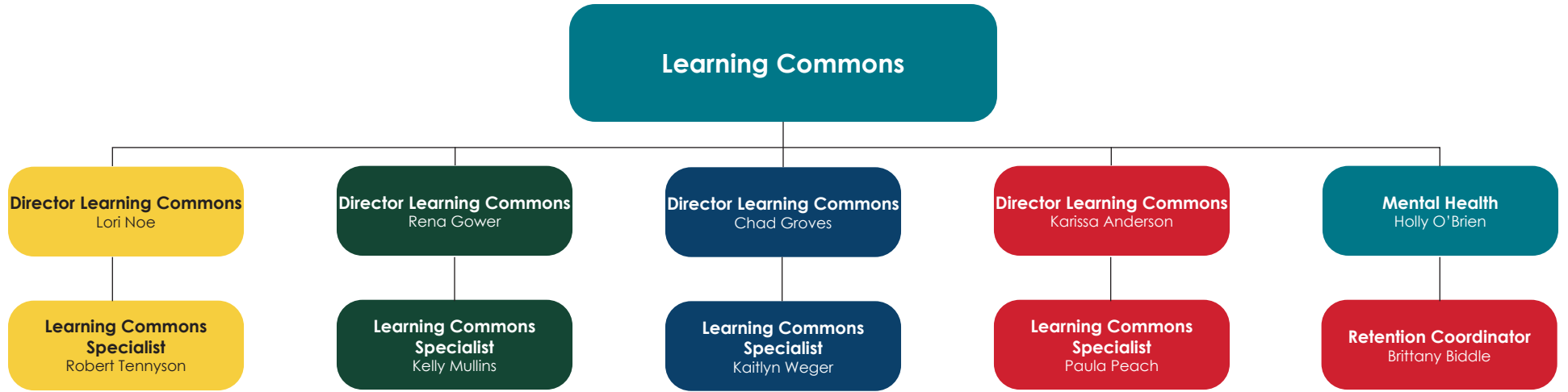
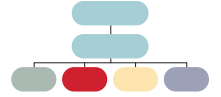
College Specific
Athletics
O&M Team
Theater

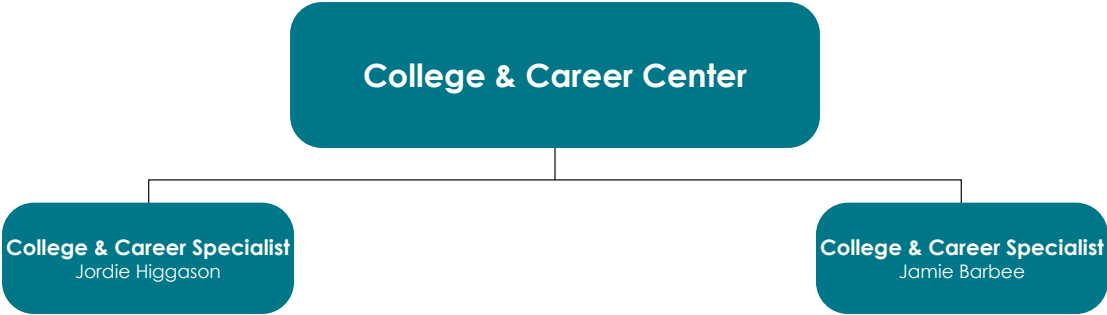


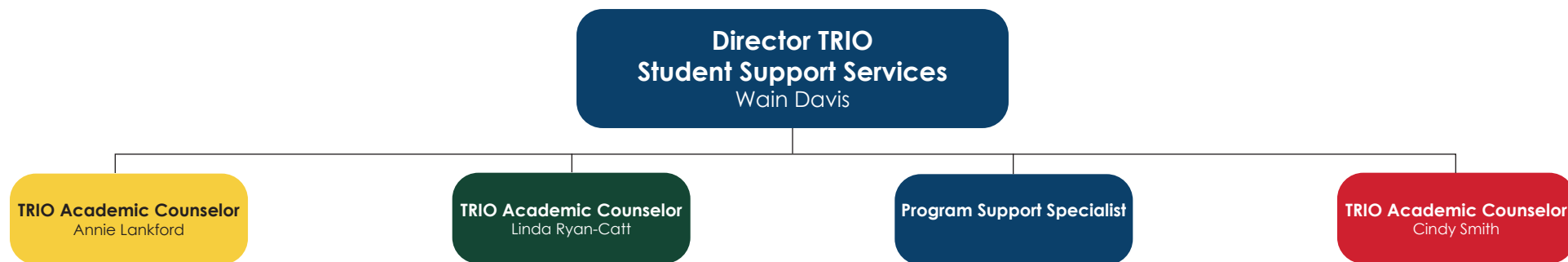












ILLINOIS EASTERN COMMUNITY COLLEGES Administrative Organizational Chart

