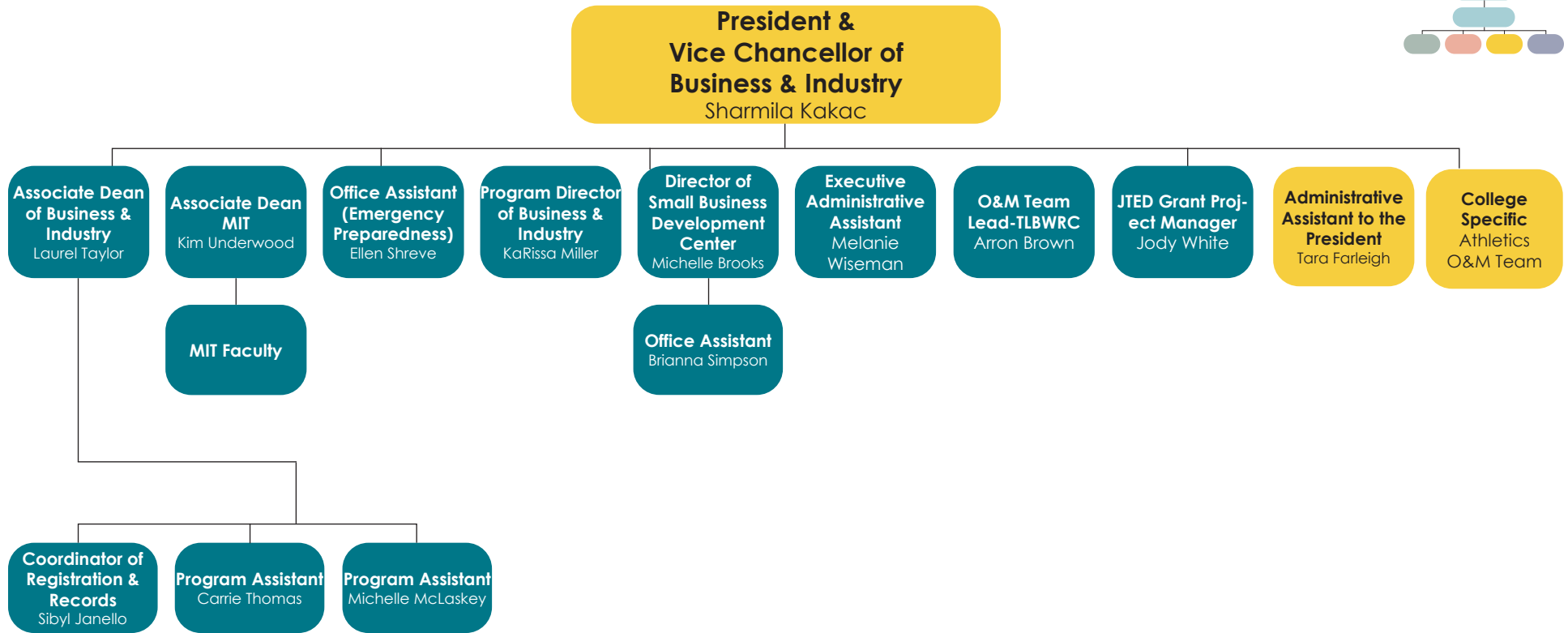
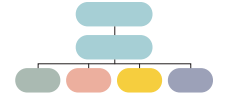
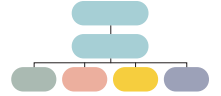
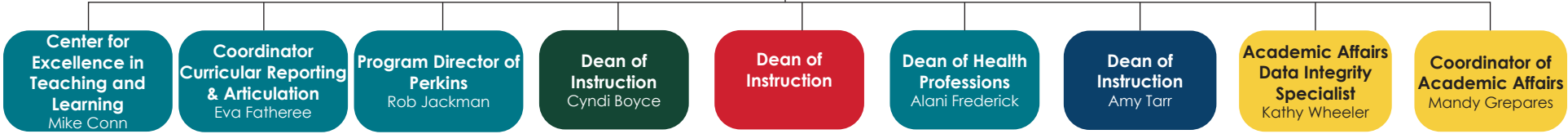


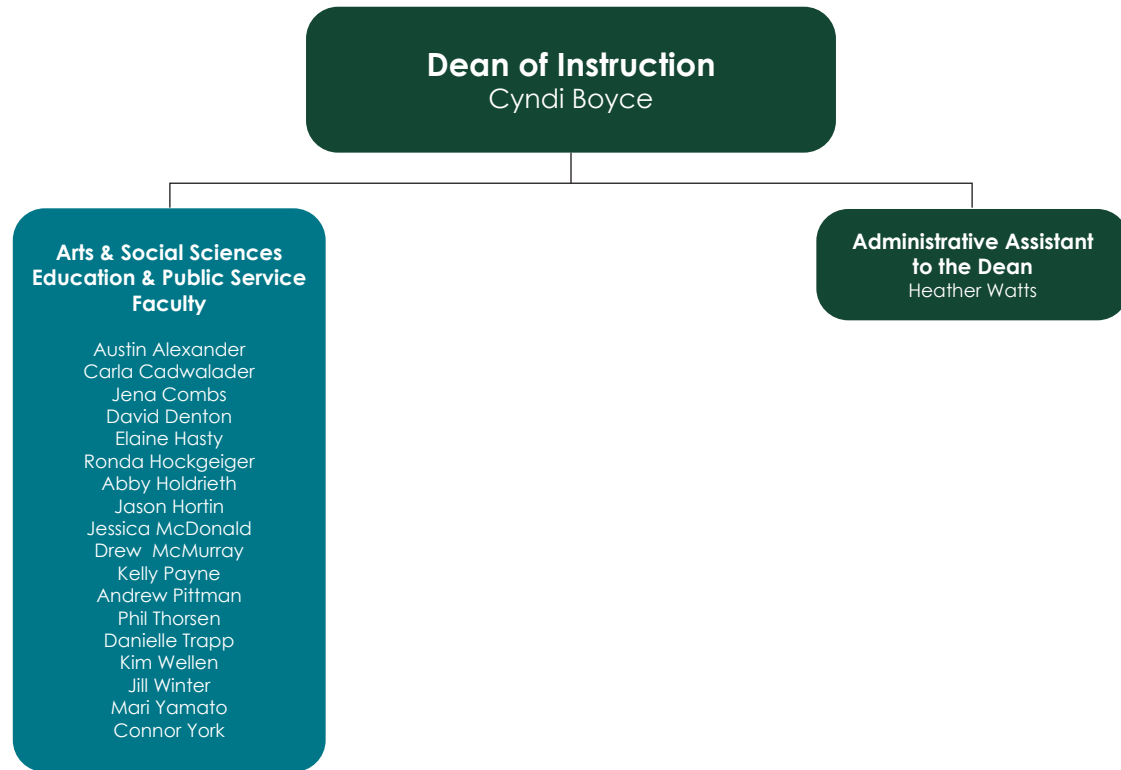
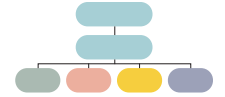
ILLINOIS EASTERN COMMUNITY COLLEGES Administrative Organizational Chart



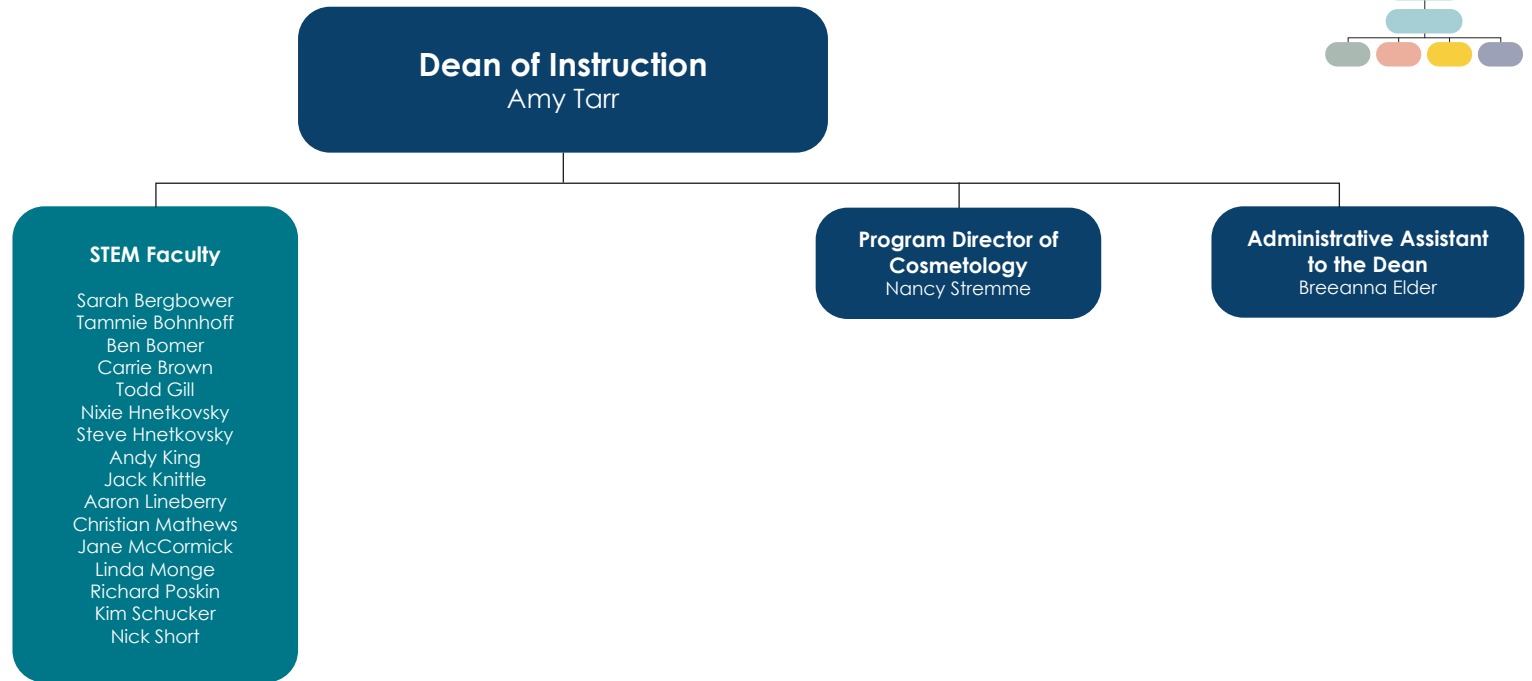
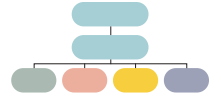


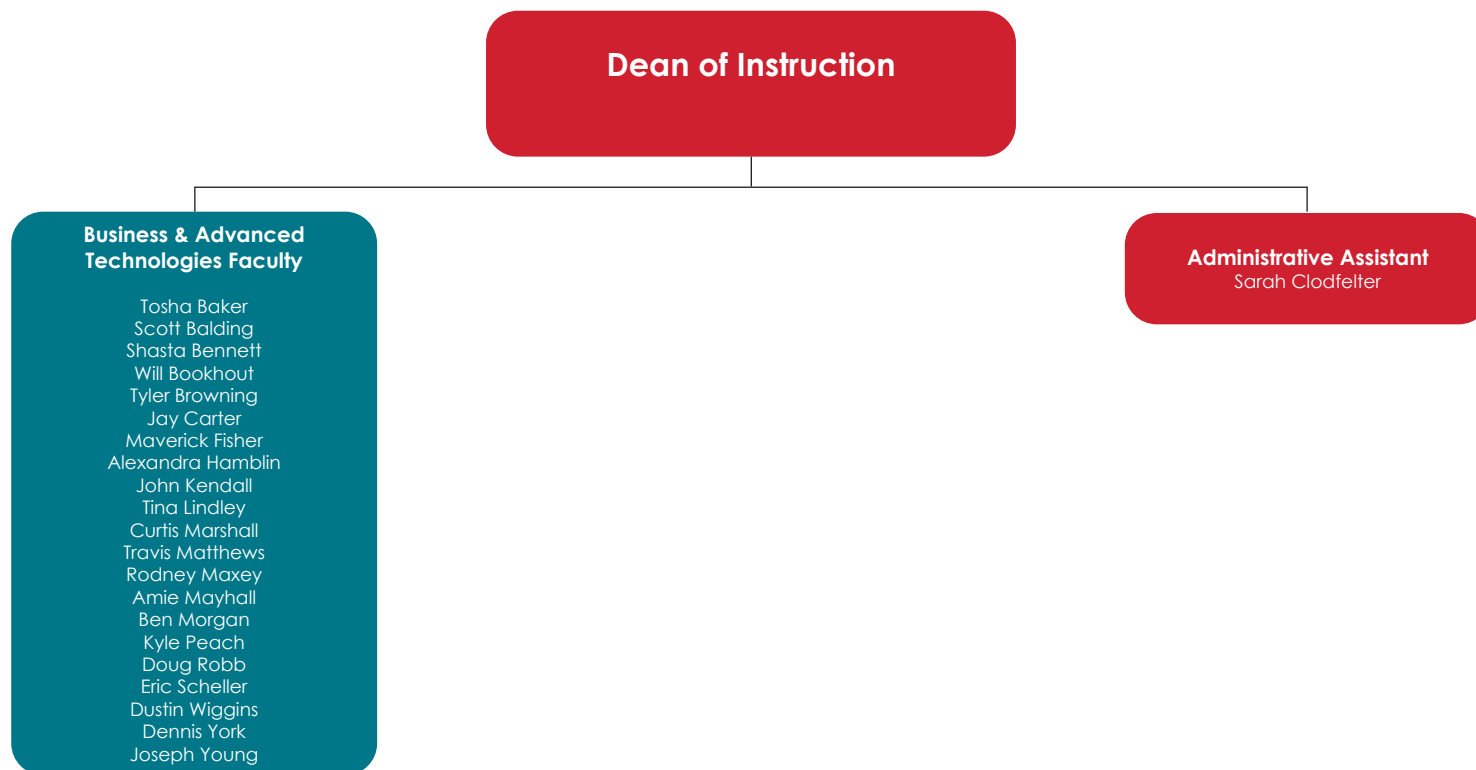
Vice Chancellor of Academic Affairs
Cathy Robb

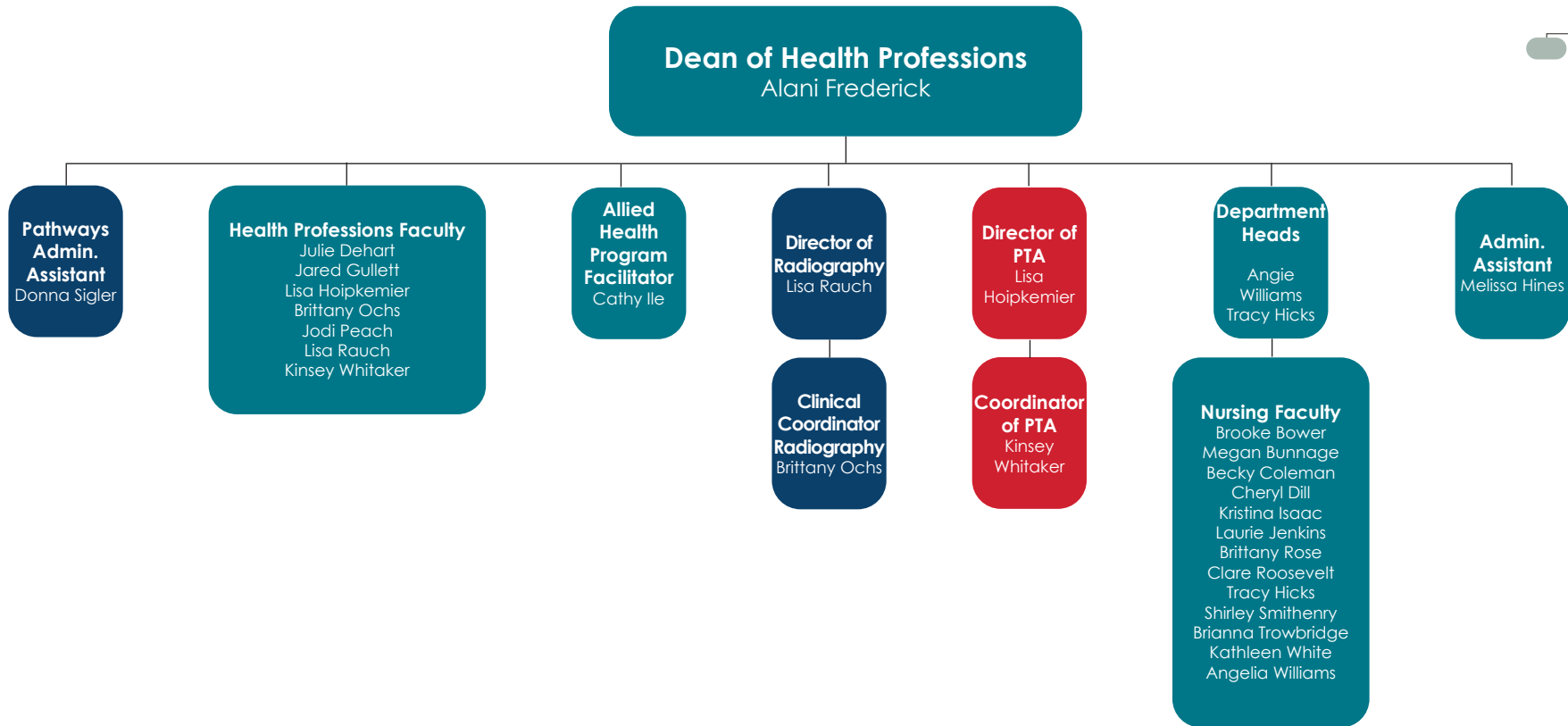
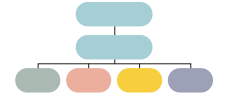


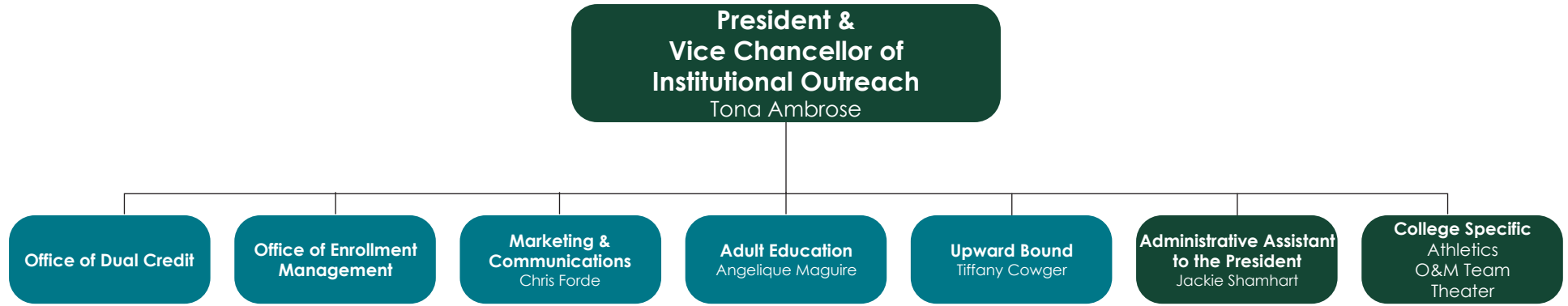
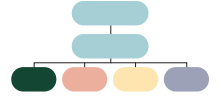


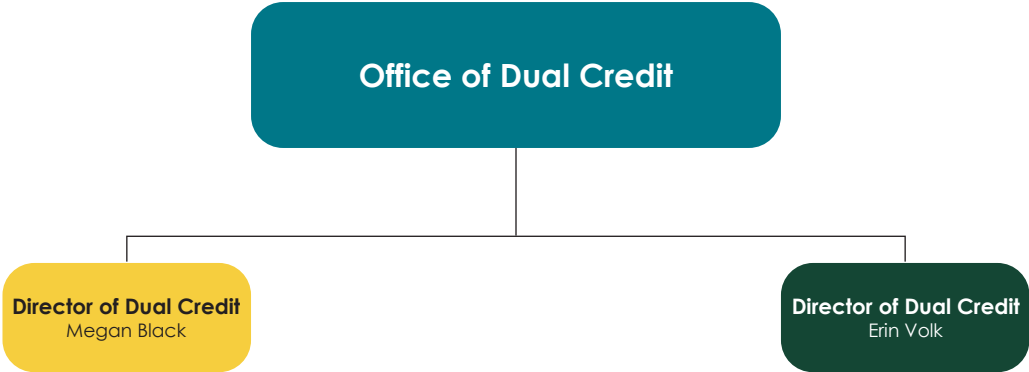
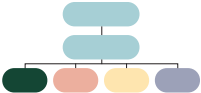
ILLINOIS EASTERN COMMUNITY COLLEGES Administrative Organizational Chart

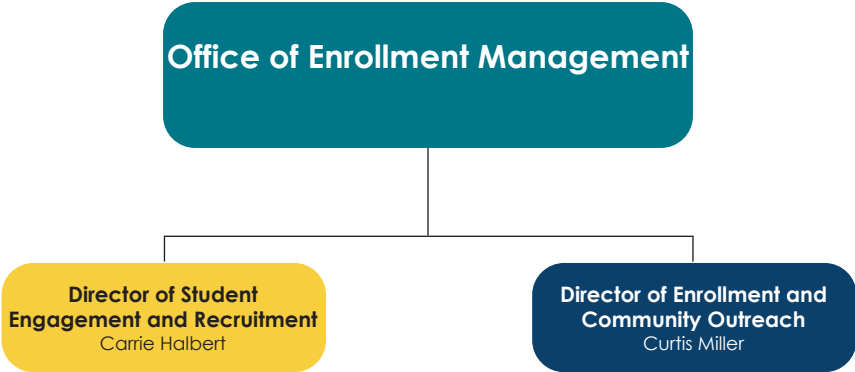
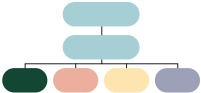


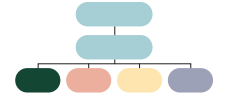


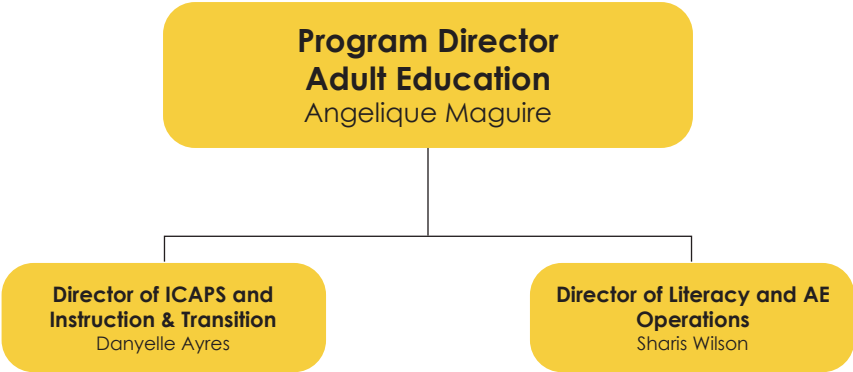


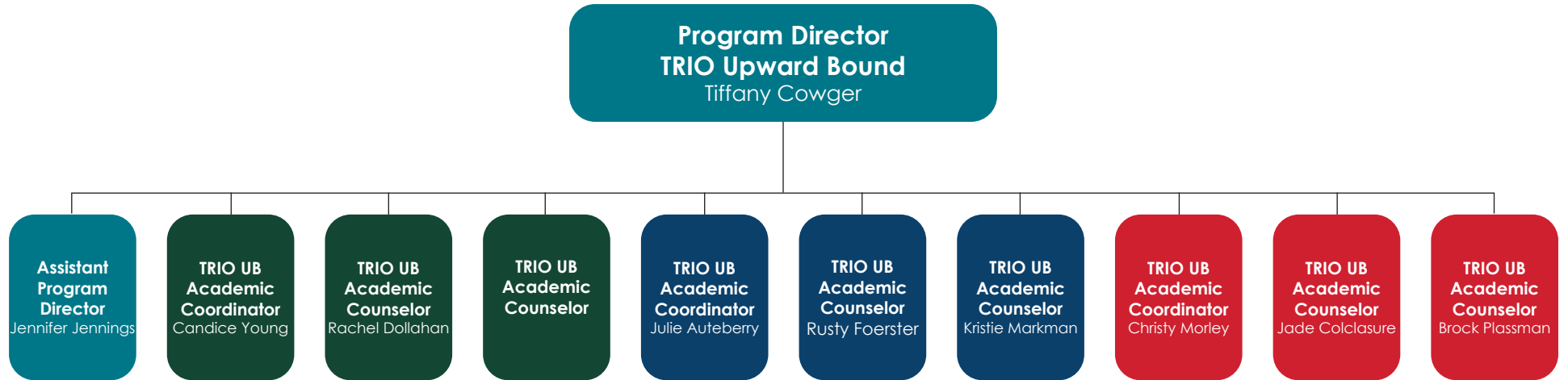
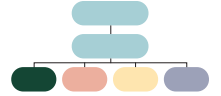


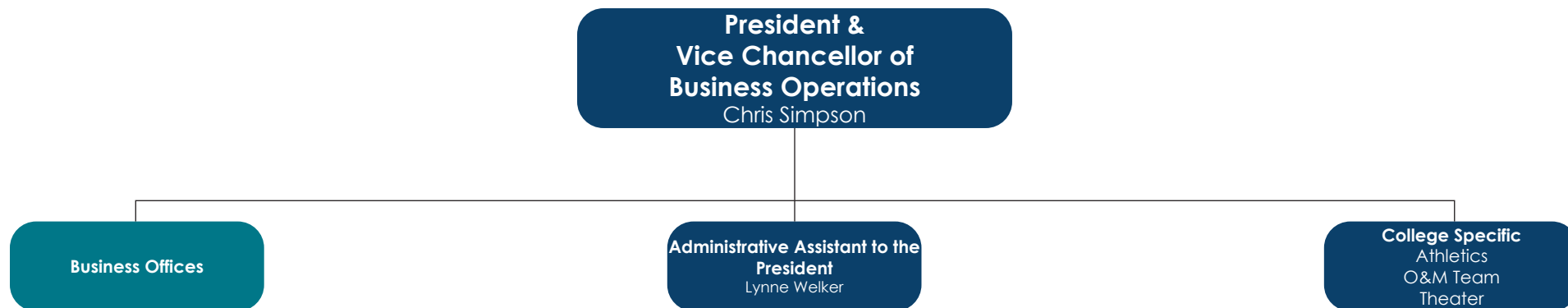


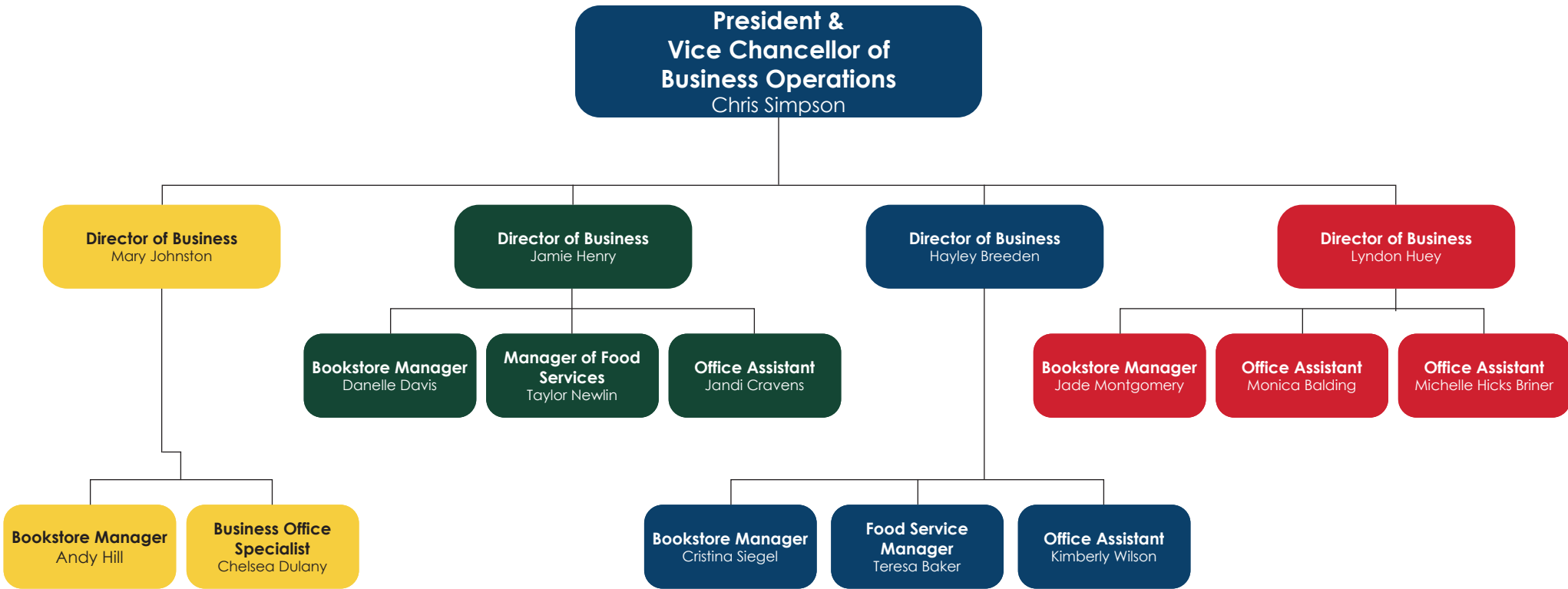
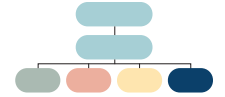


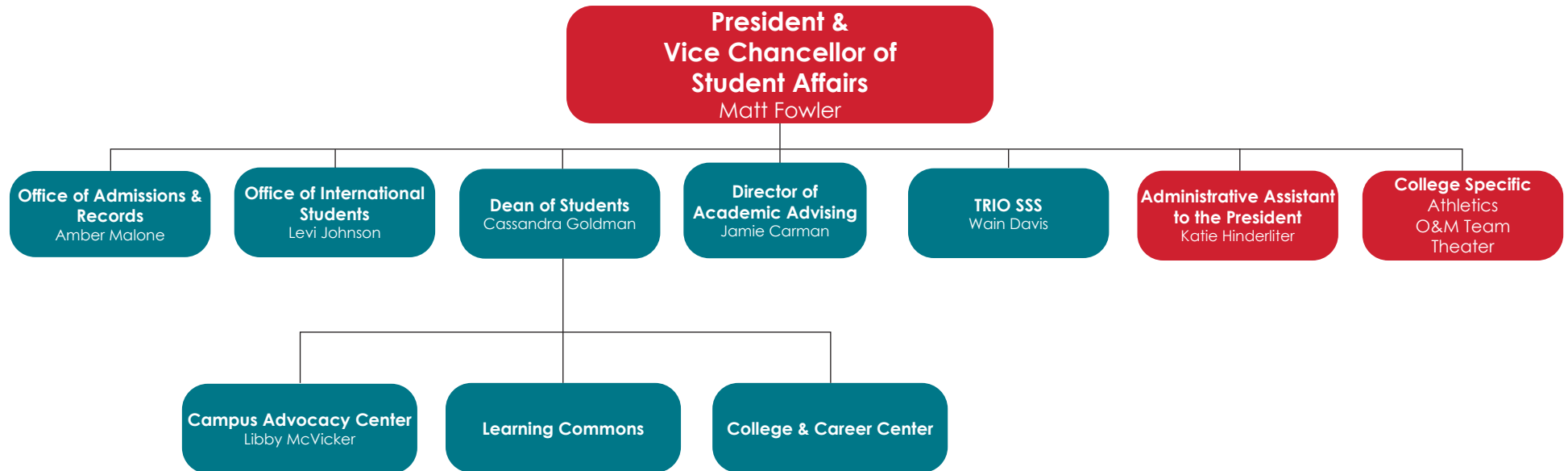


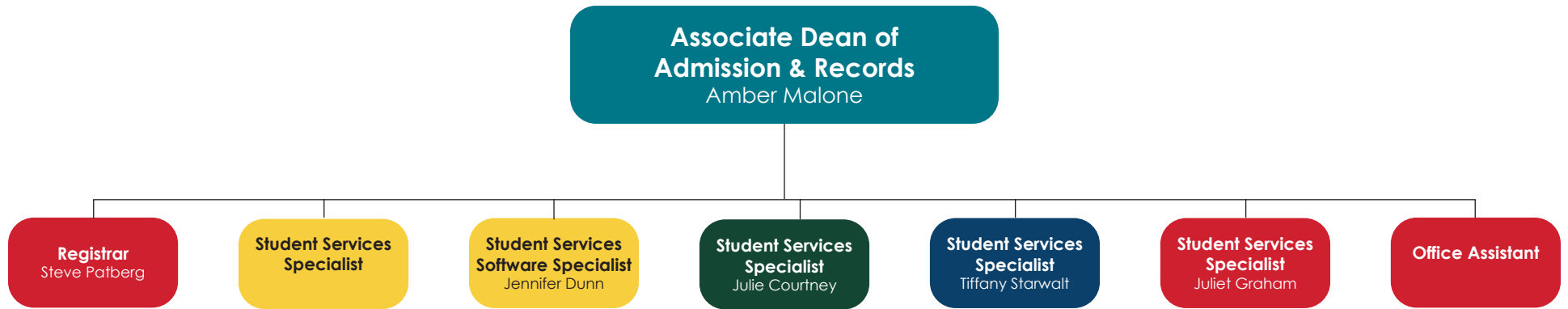


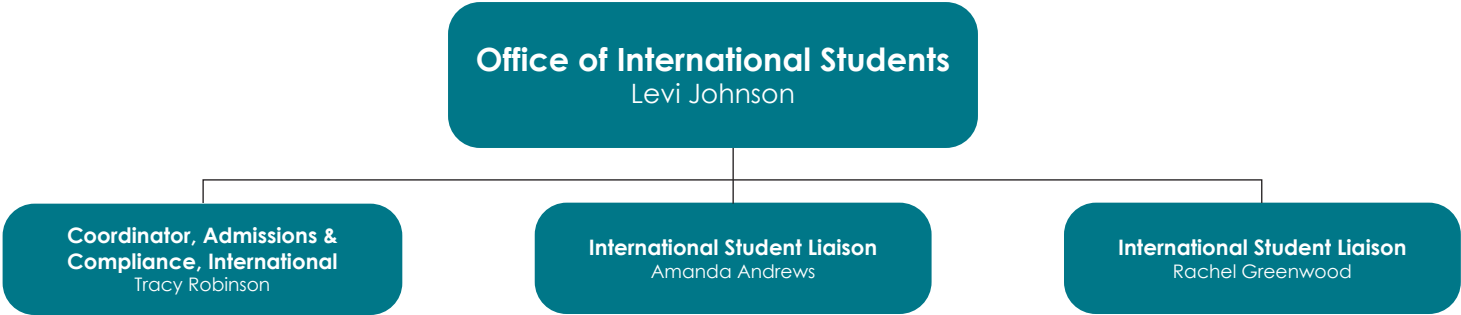


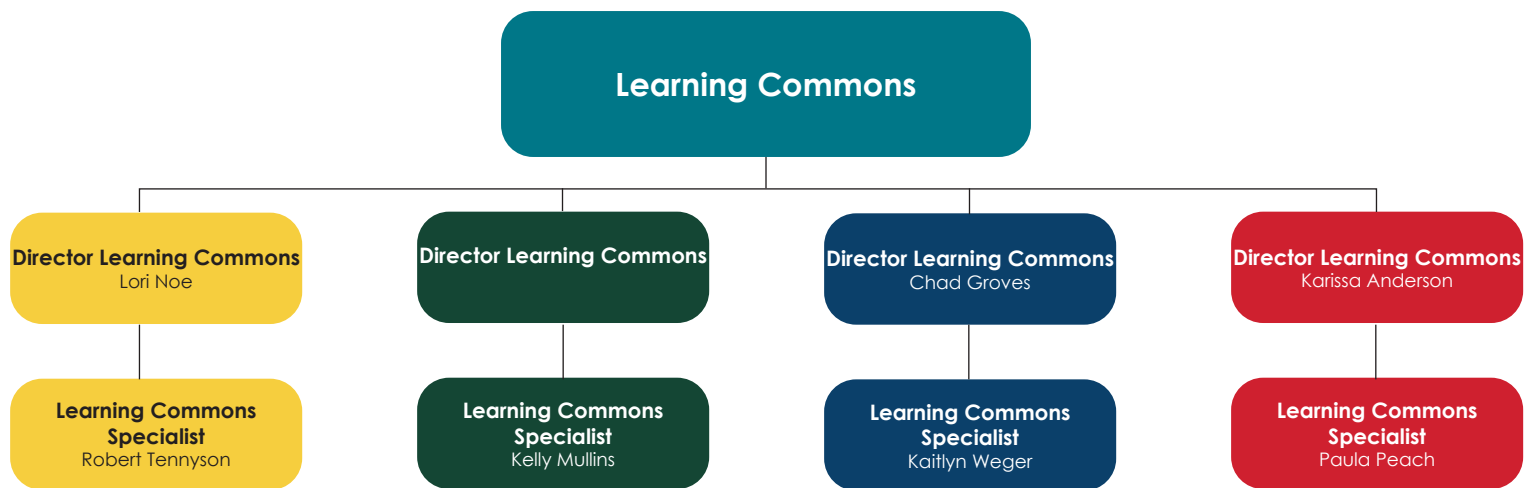


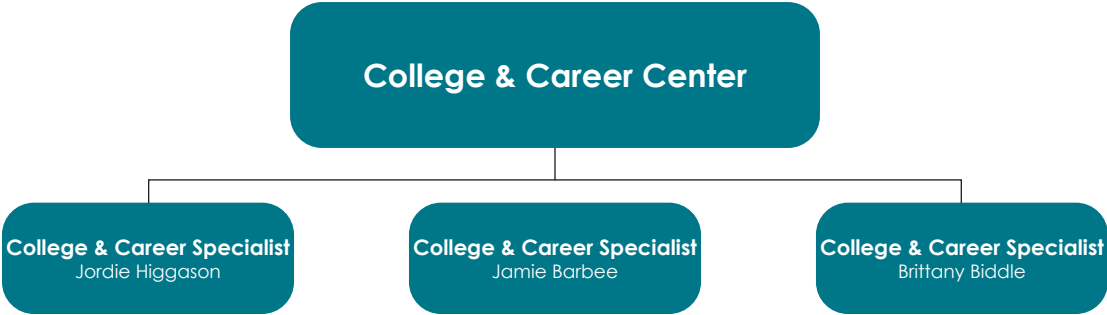
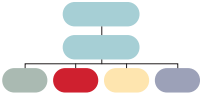


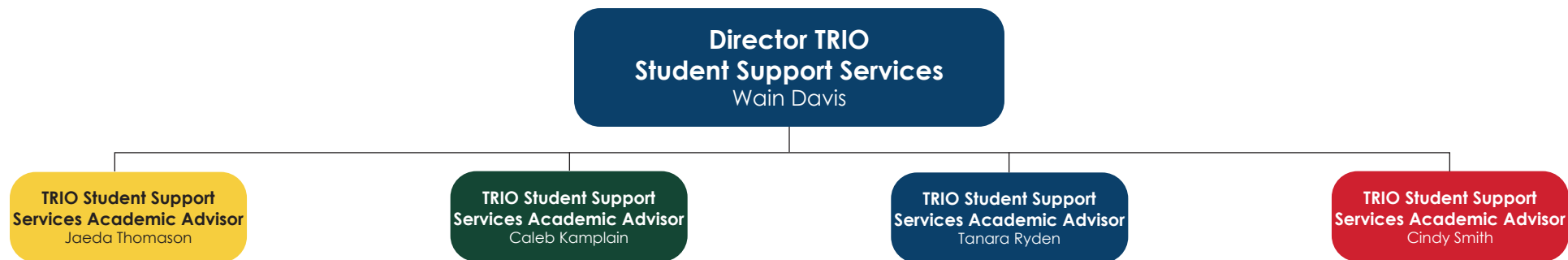












ILLINOIS EASTERN COMMUNITY COLLEGES Administrative Organizational Chart



Director of Academic Advising
Jamie Carman

Advisor
Kara Blanton

Advisor
Eric Resor

Advisor
Angel Kerner

Advisor
Jodi Schneider

Advisor
Amanda Nelson

Advisor
Patrick Harris

Advisor
Jared Price

Allied Health Program Advisor
Julie Bullard

Allied Health Program Advisor
Michelle Woods



ILLINOIS EASTERN COMMUNITY COLLEGES Administrative Organizational Chart

