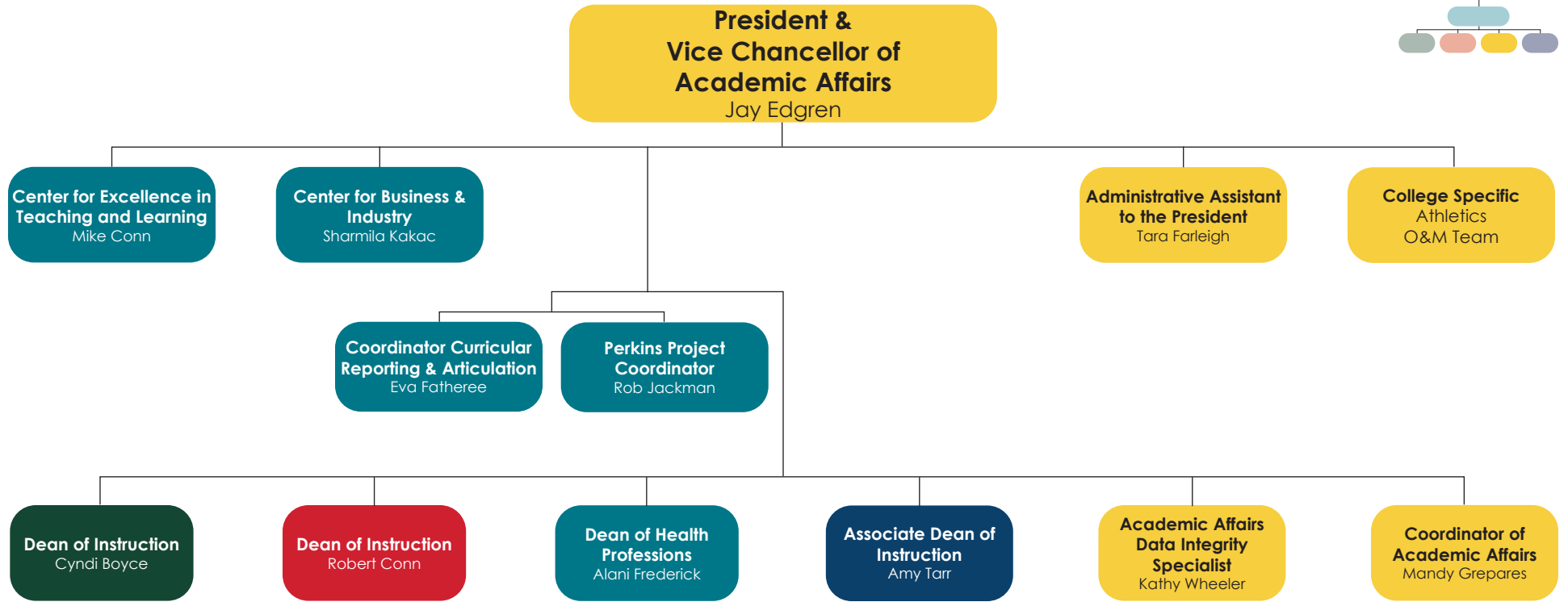
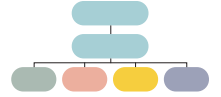
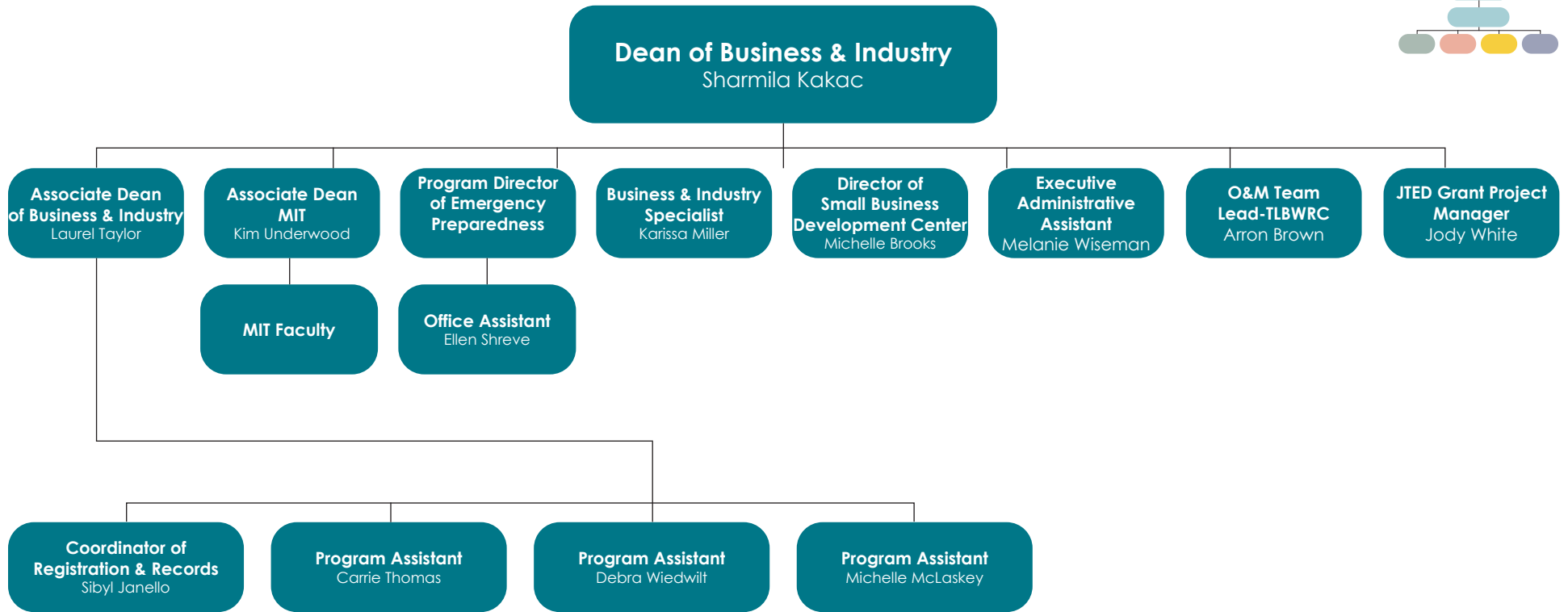
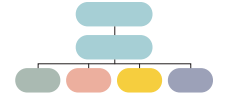


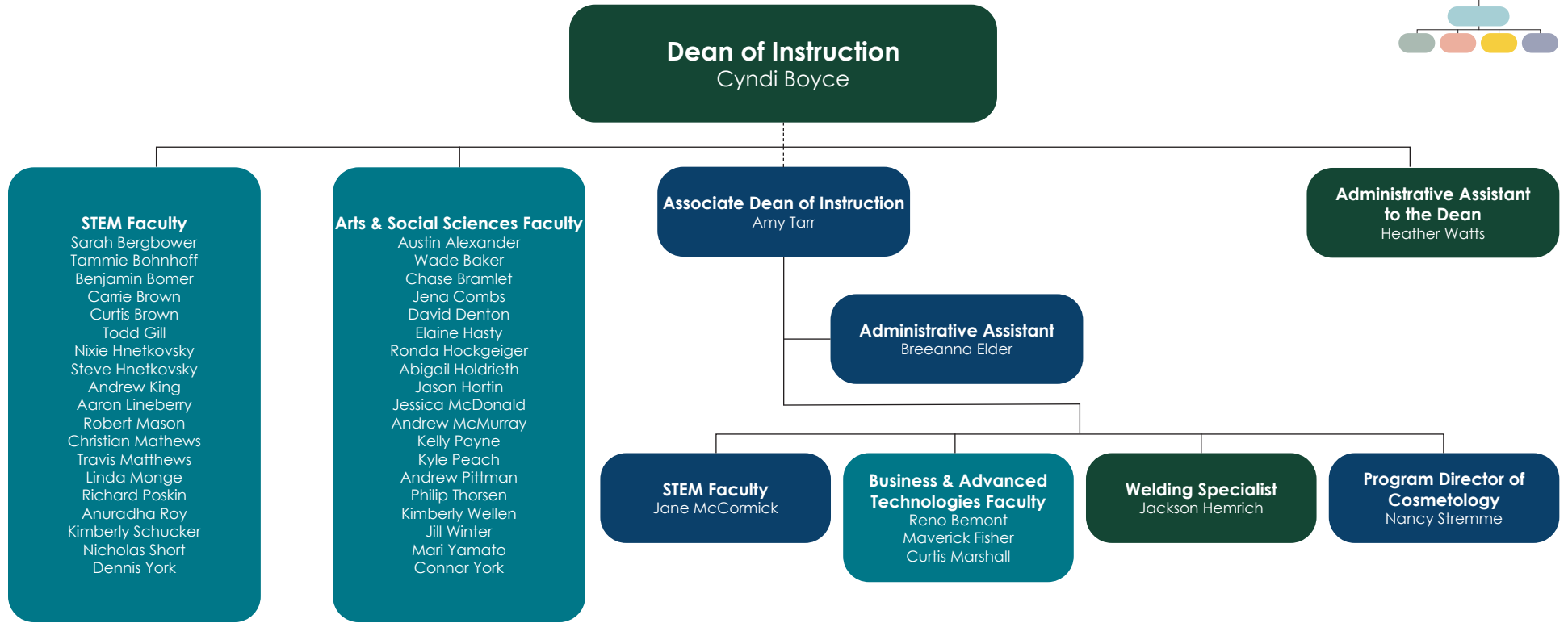
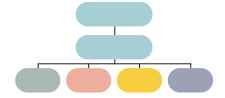
ILLINOIS EASTERN COMMUNITY COLLEGES Administrative Organizational Chart

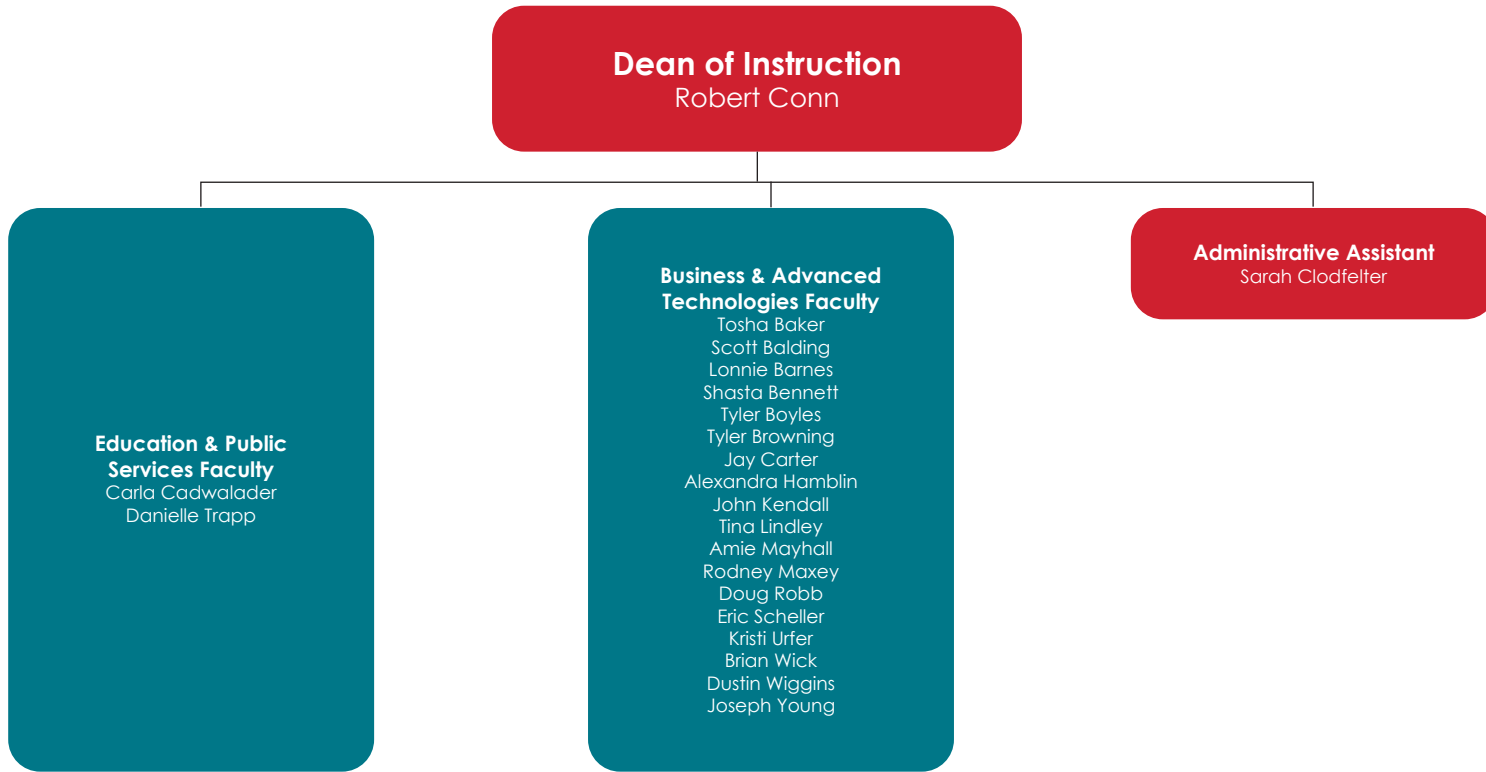
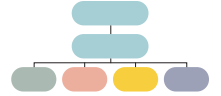


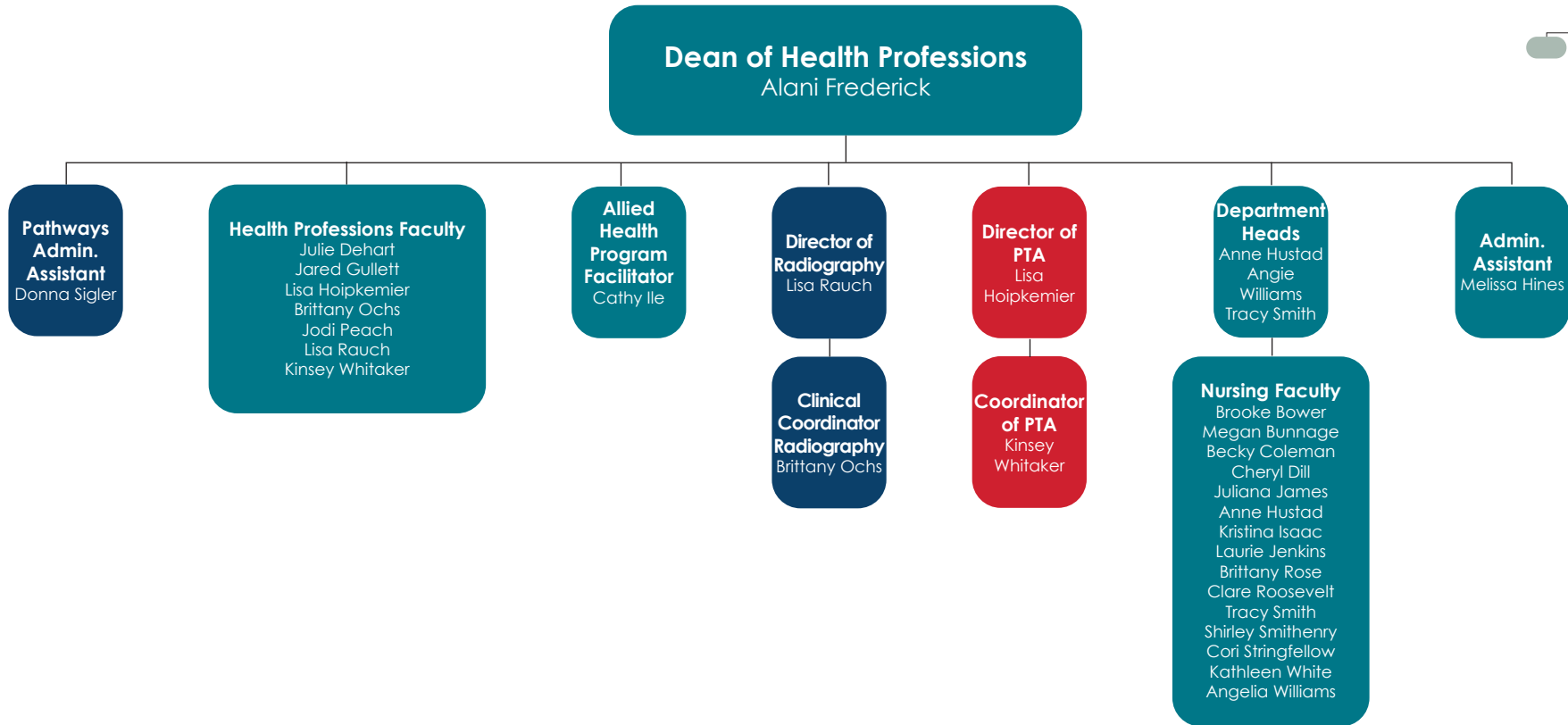
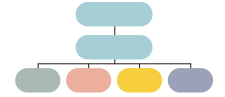
ILLINOIS EASTERN COMMUNITY COLLEGES Administrative Organizational Chart

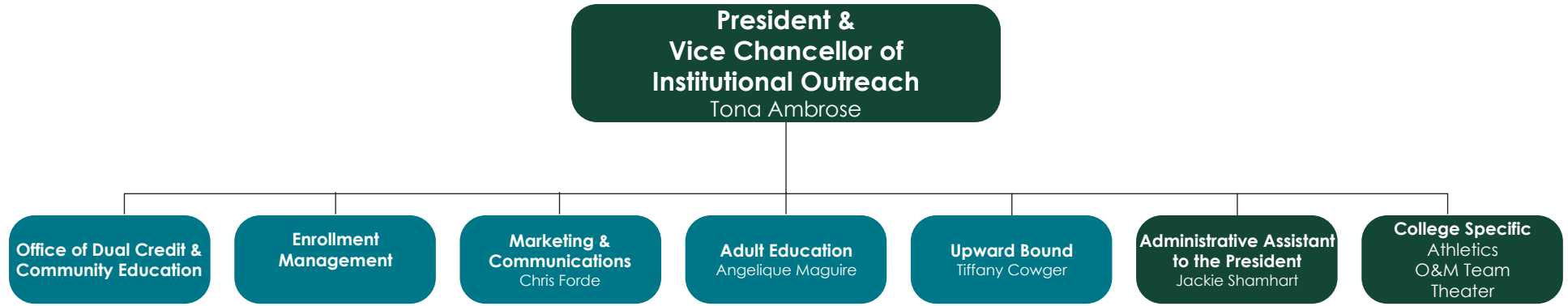
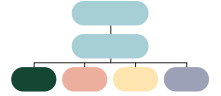


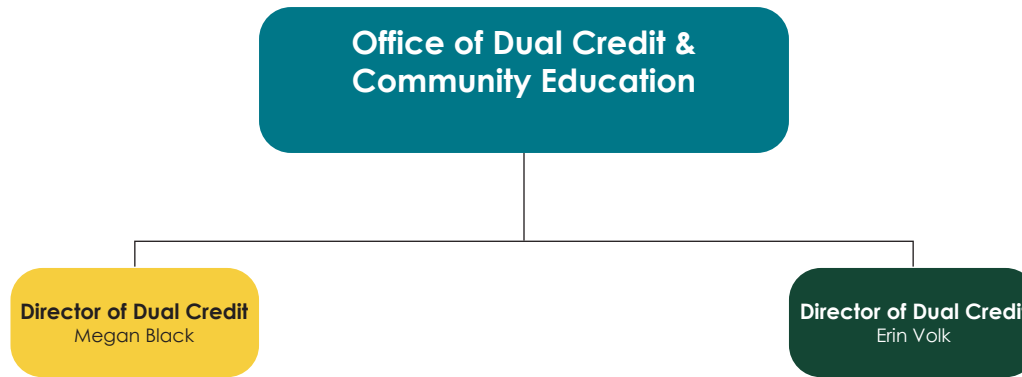
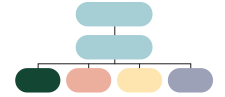
ILLINOIS EASTERN COMMUNITY COLLEGES Administrative Organizational Chart

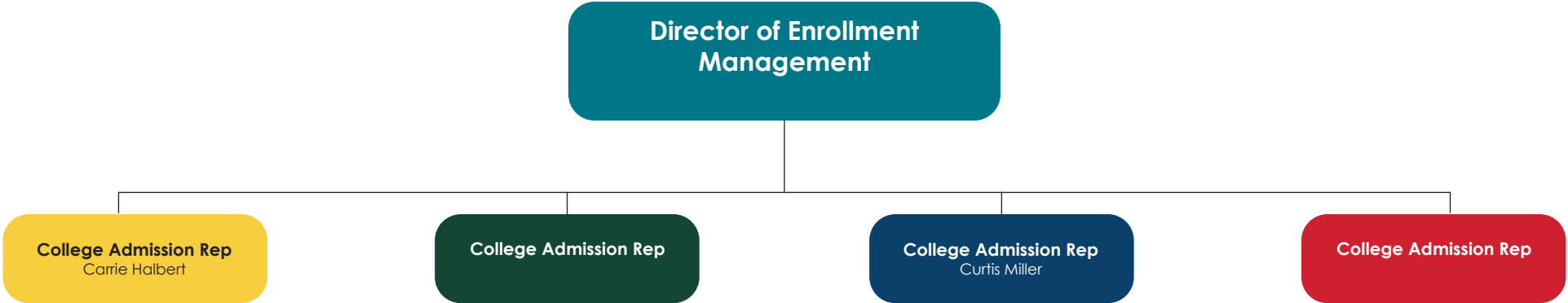
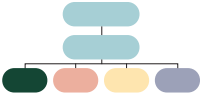




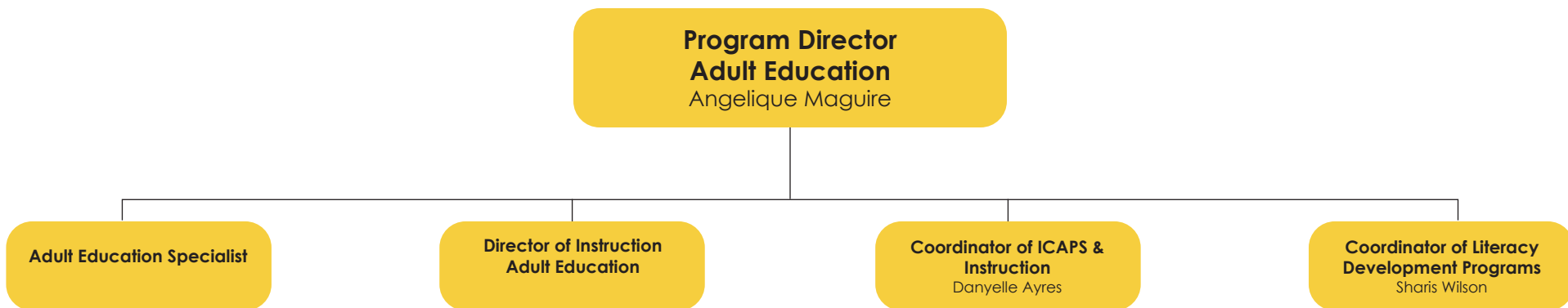


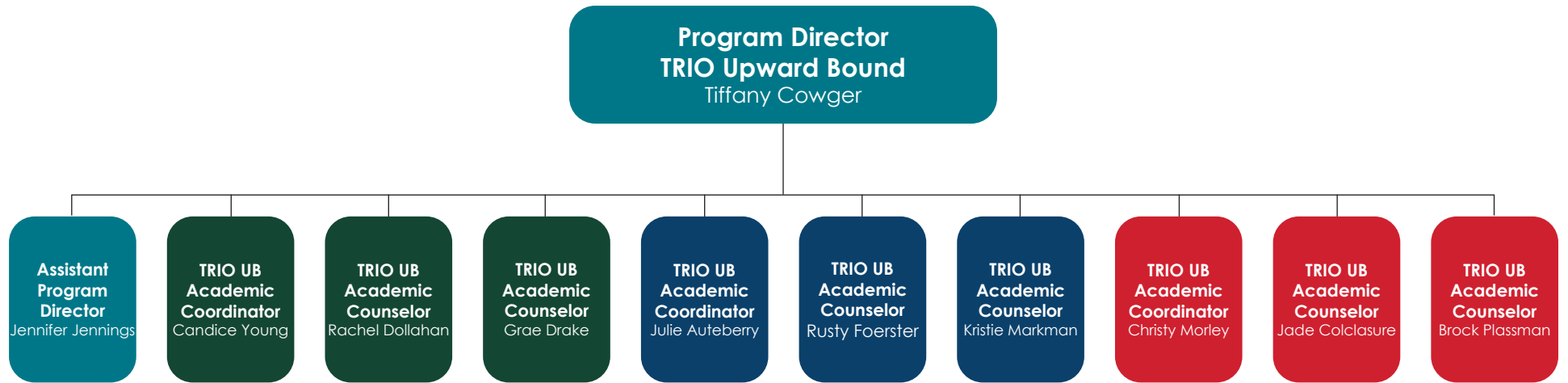
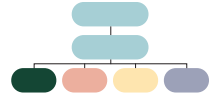


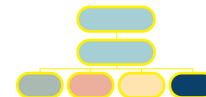












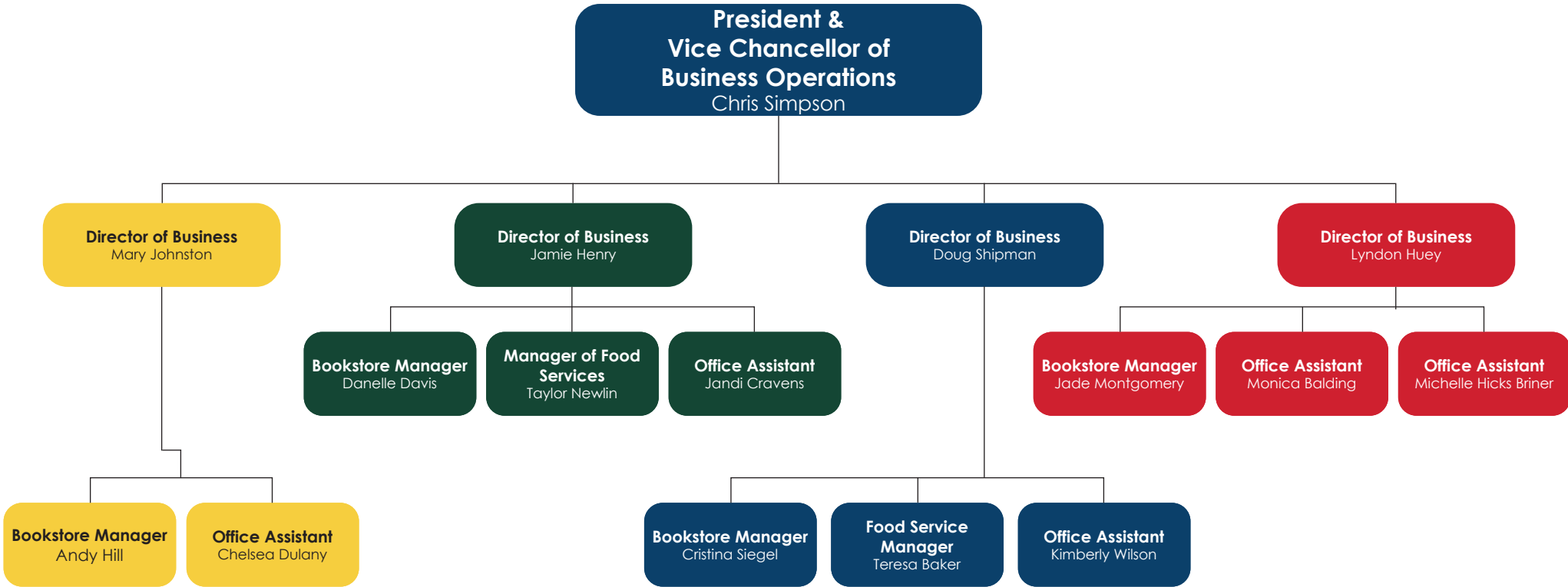
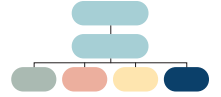
**President &
Vice Chancellor of
Business Operations**
Chris Simpson

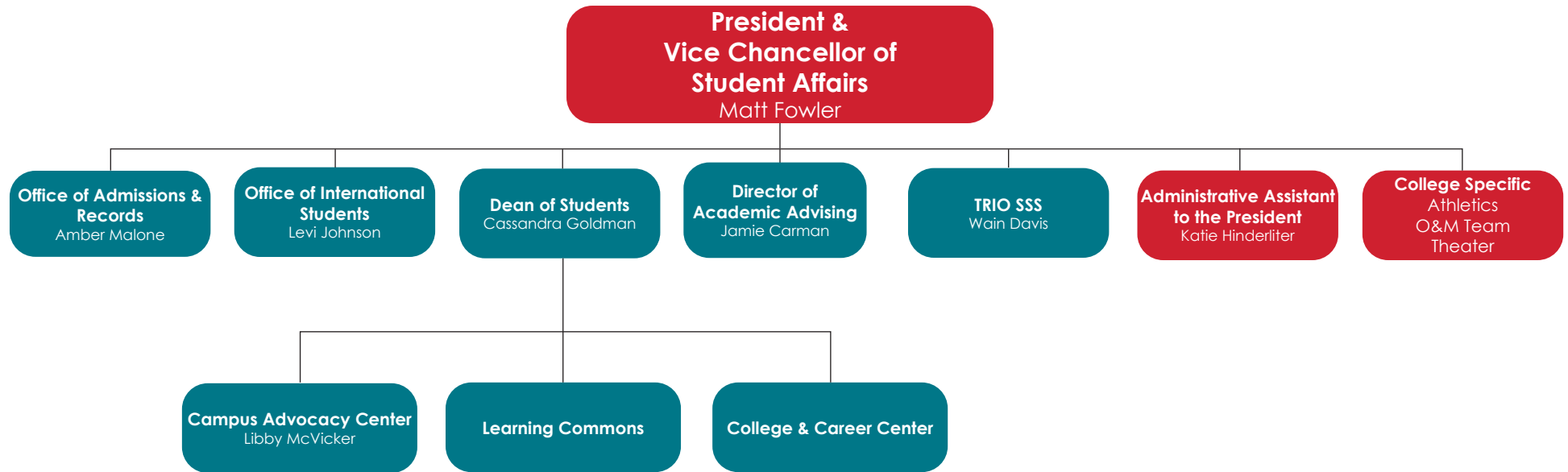
Business Offices

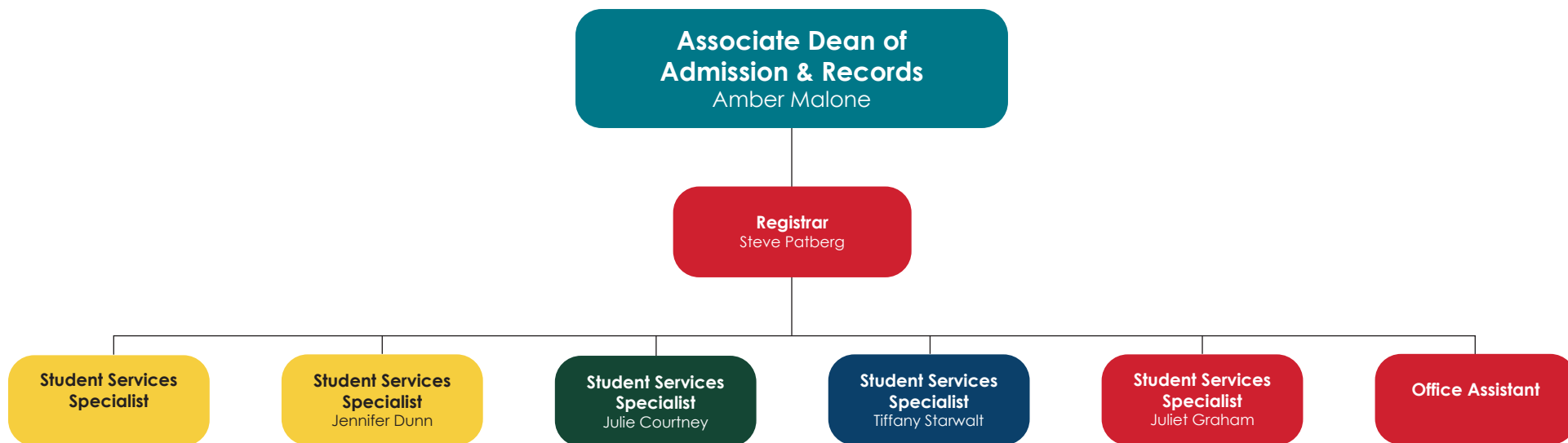
**Administrative Assistant to the
President**
Lynne Welker

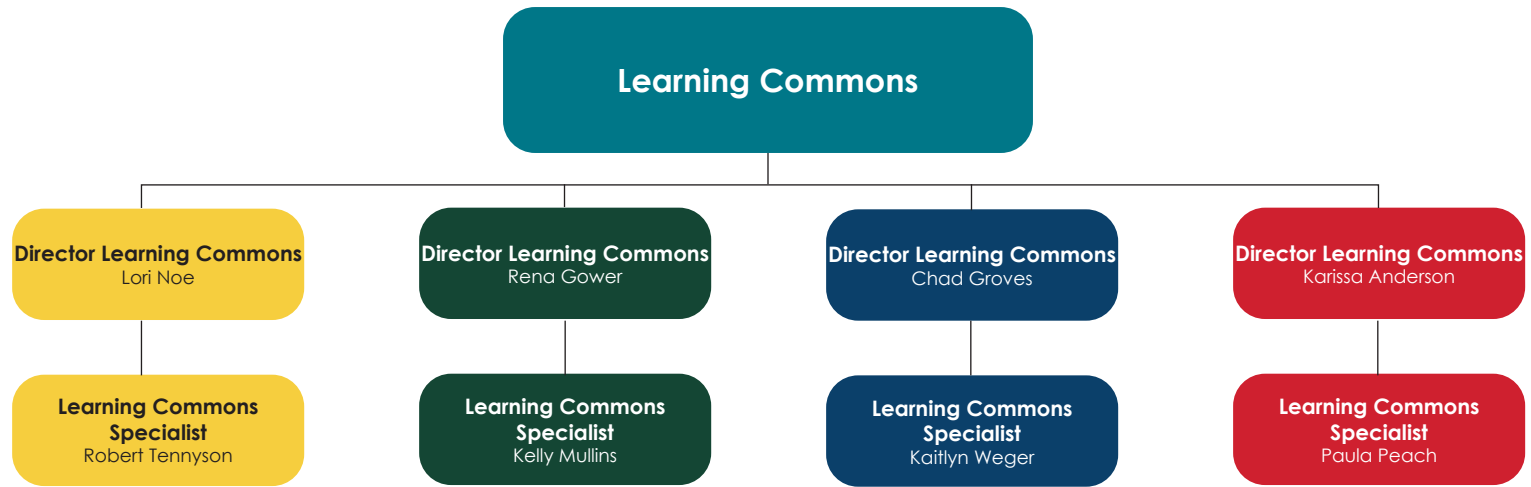
College Specific
Athletics
O&M Team
Theater

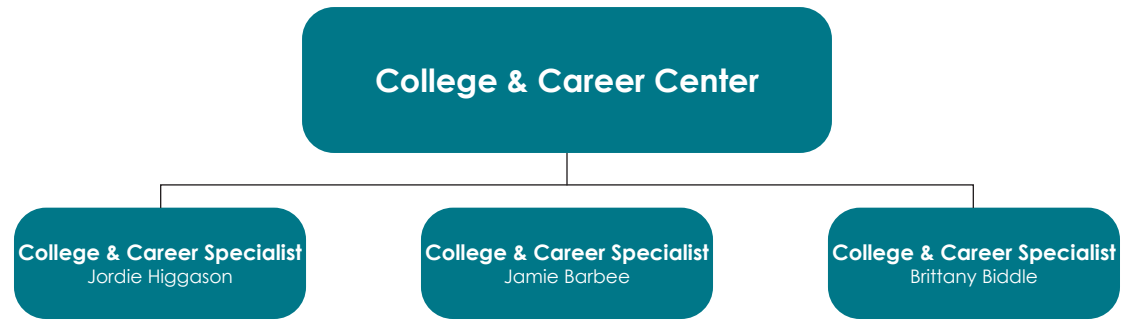


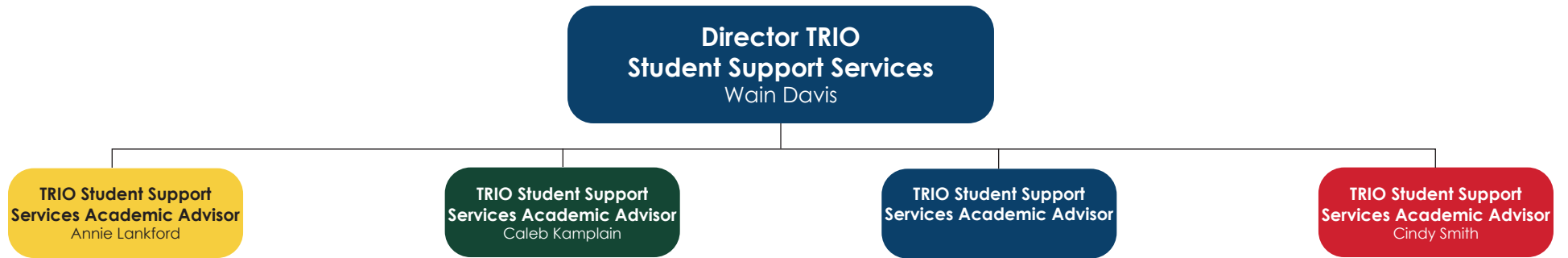
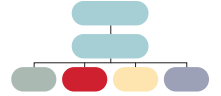












ILLINOIS EASTERN COMMUNITY COLLEGES Administrative Organizational Chart



Director of Academic Advising
Jamie Carman



ILLINOIS EASTERN COMMUNITY COLLEGES Administrative Organizational Chart

