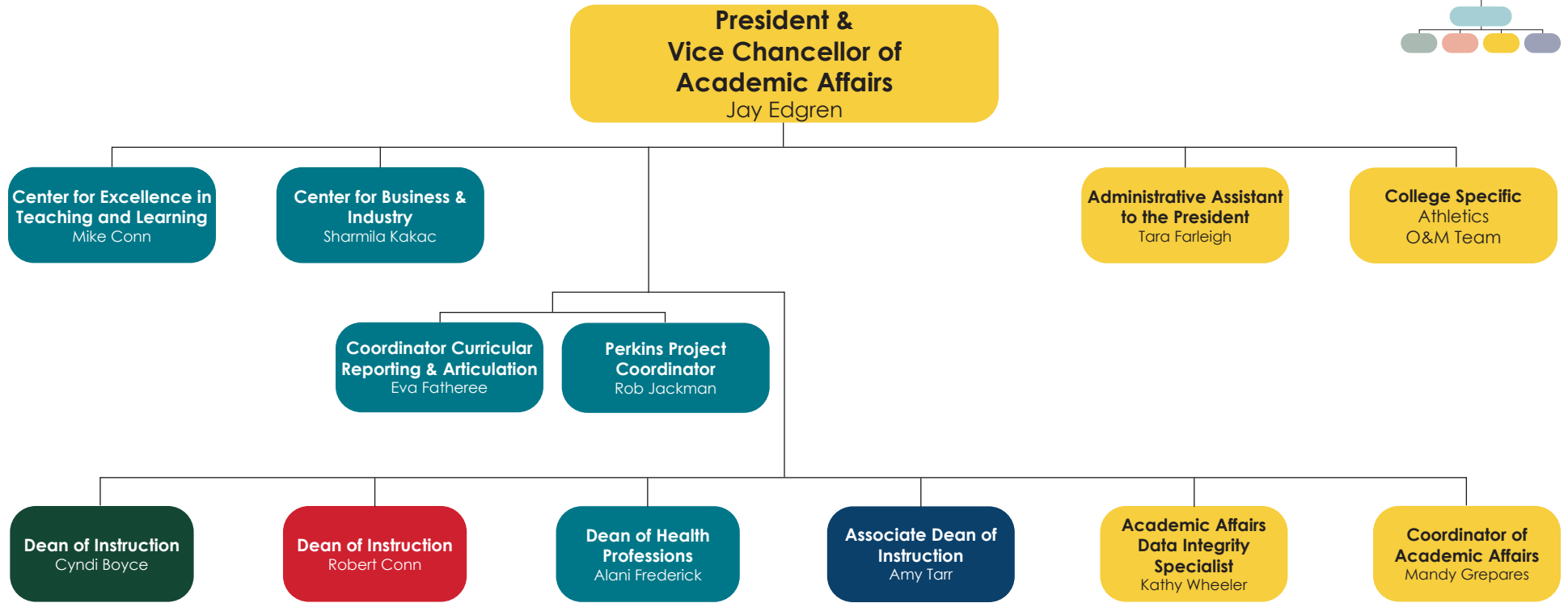
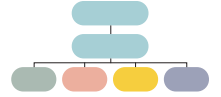
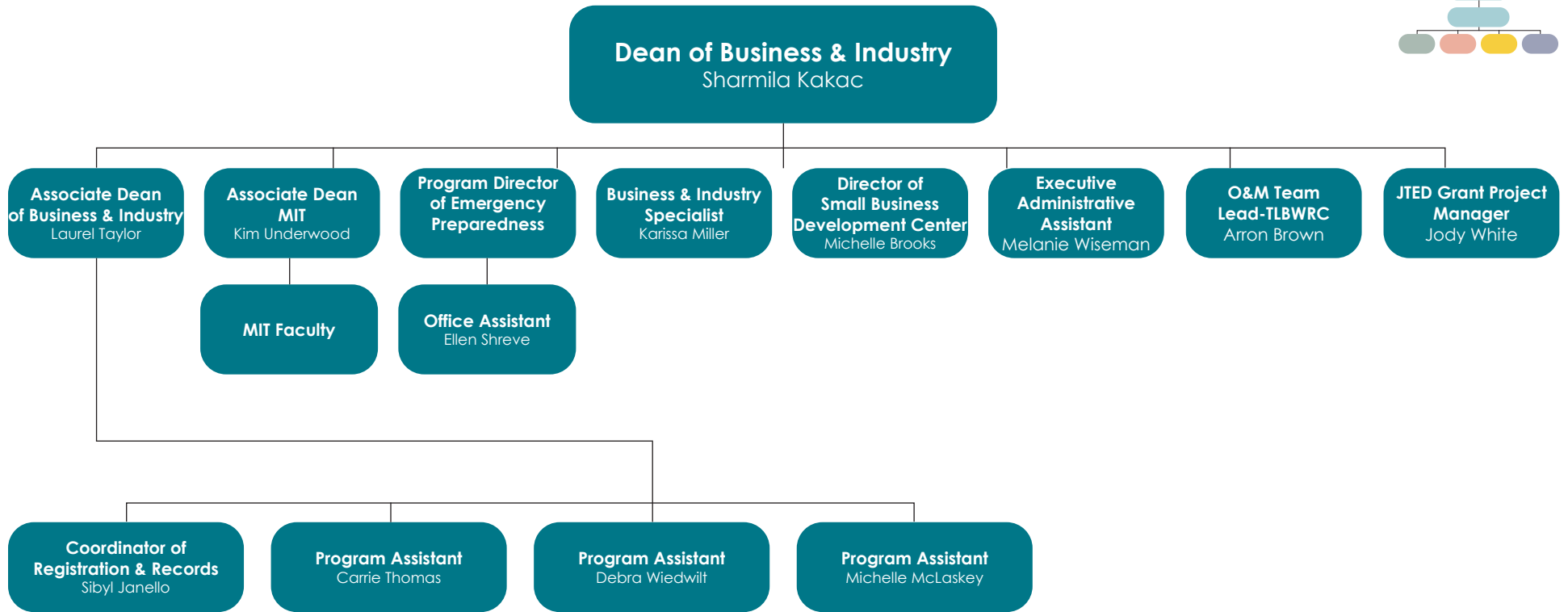
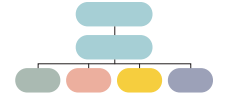


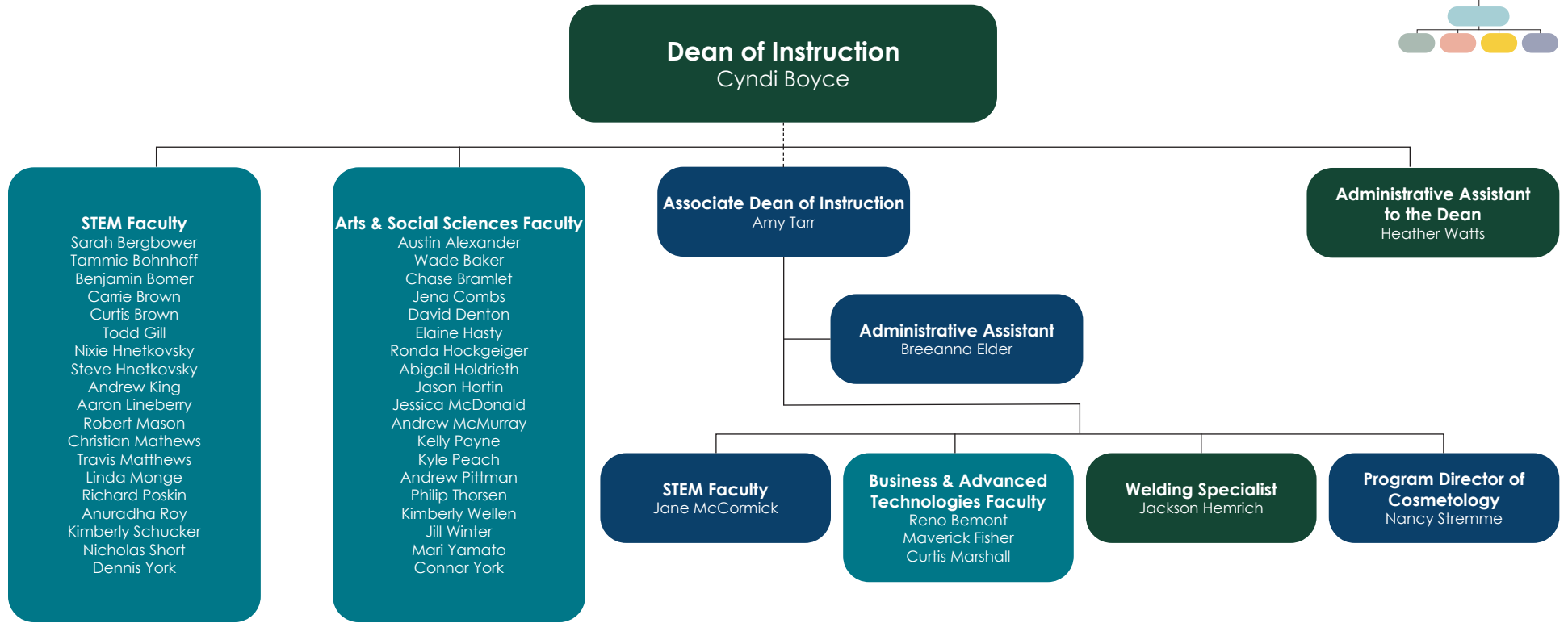
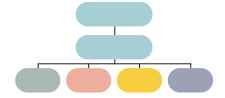
ILLINOIS EASTERN COMMUNITY COLLEGES Administrative Organizational Chart

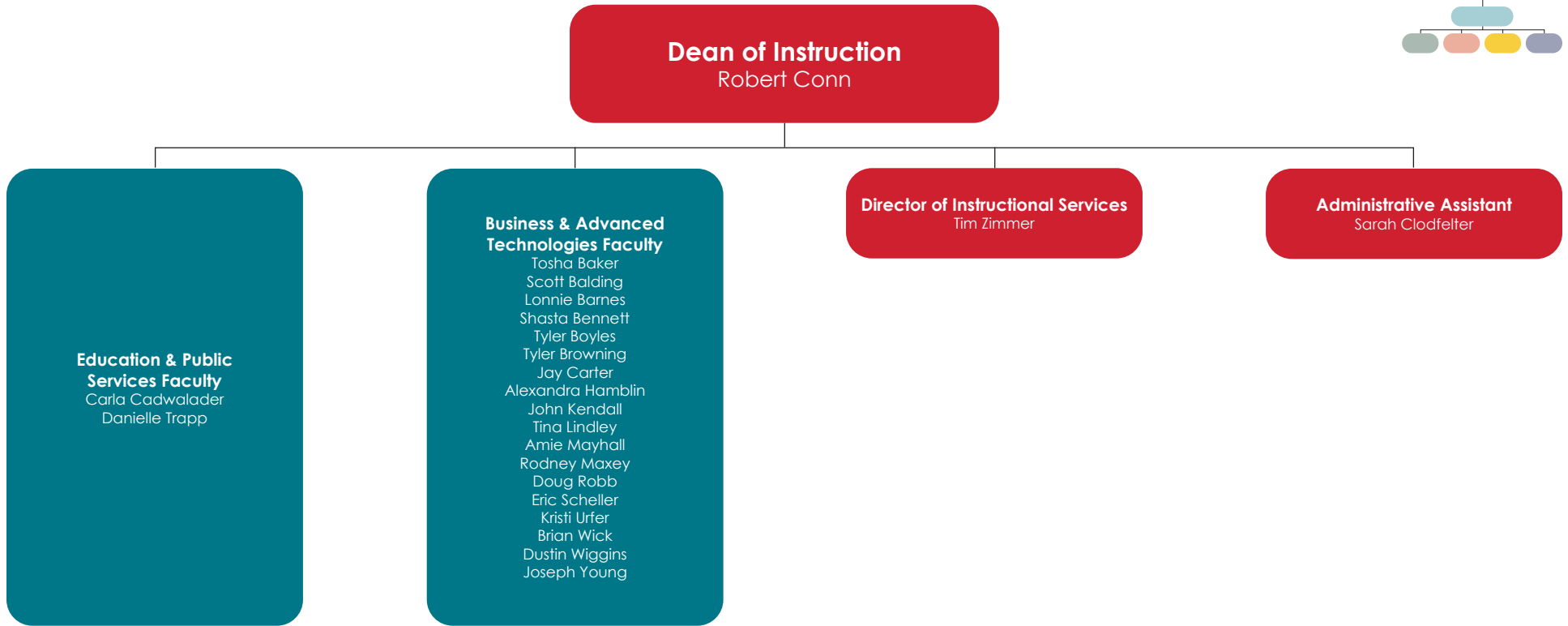
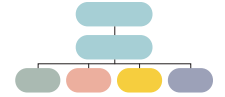


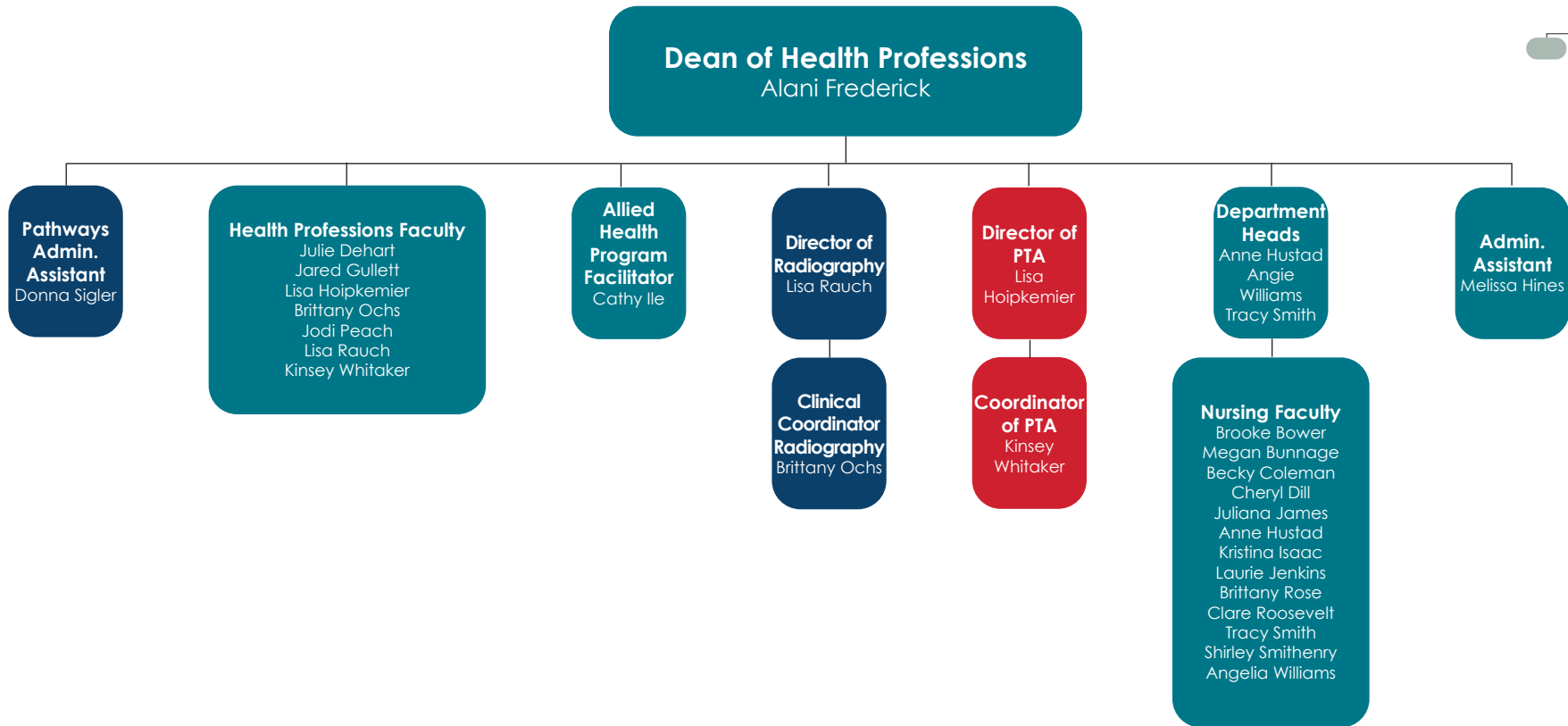
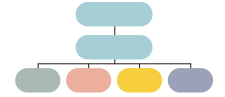
ILLINOIS EASTERN COMMUNITY COLLEGES Administrative Organizational Chart

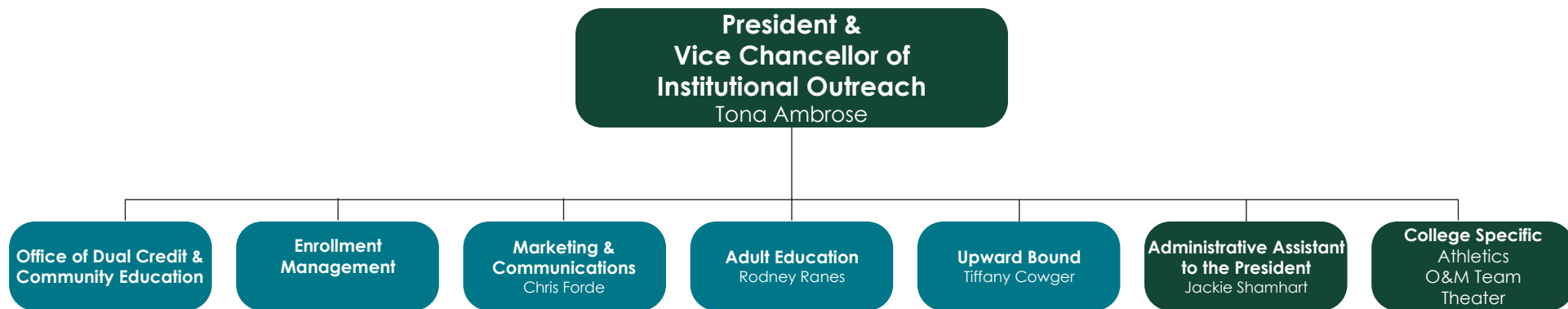


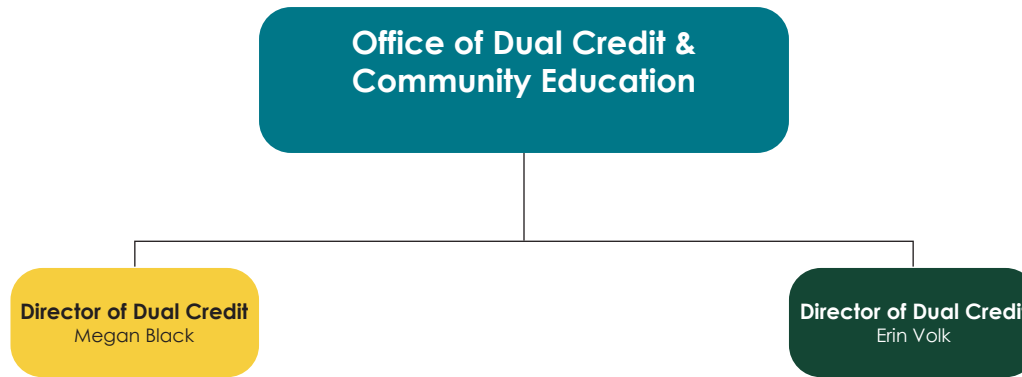
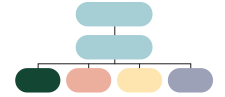
ILLINOIS EASTERN COMMUNITY COLLEGES Administrative Organizational Chart

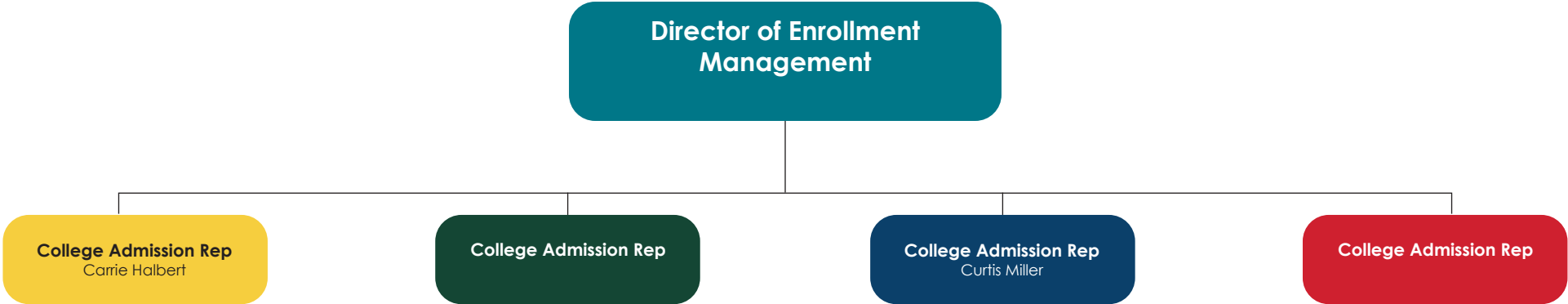




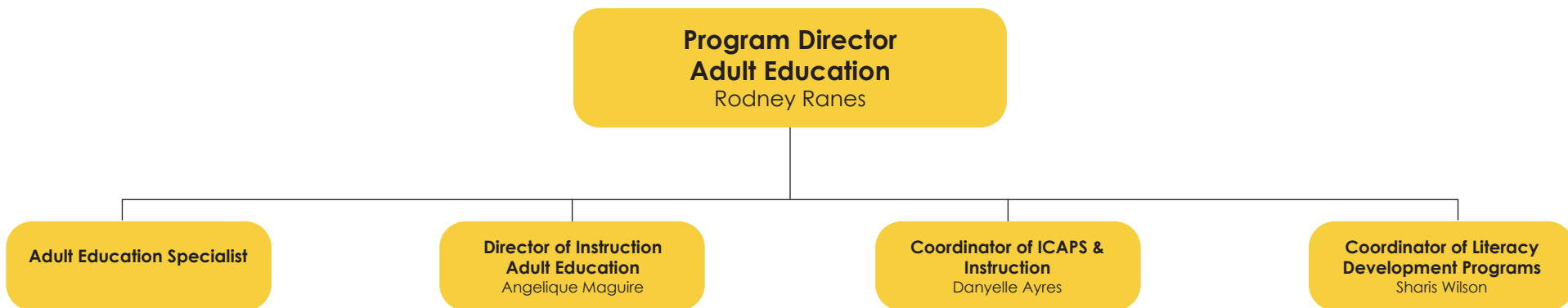


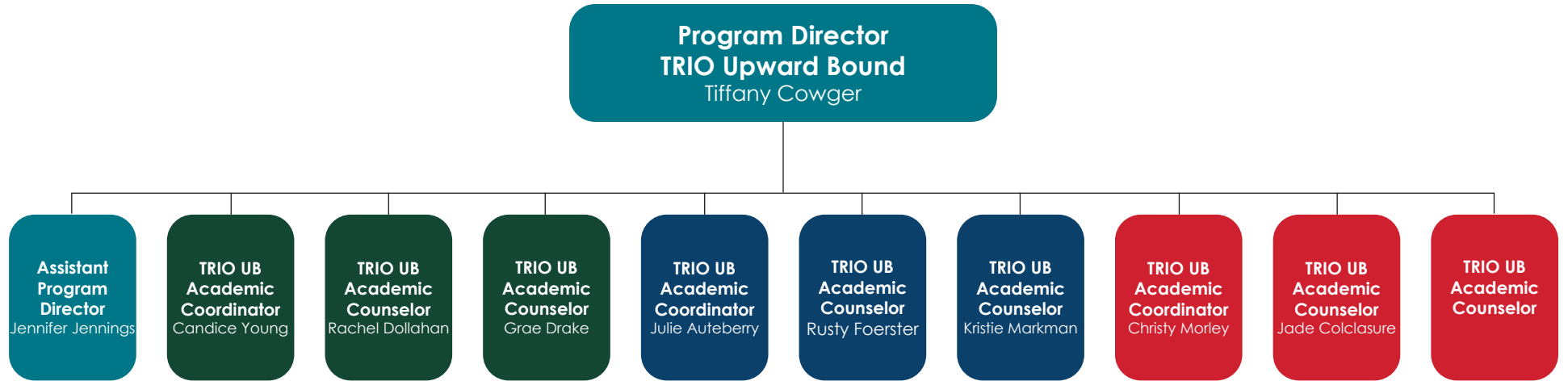
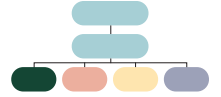


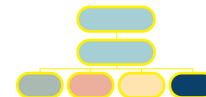












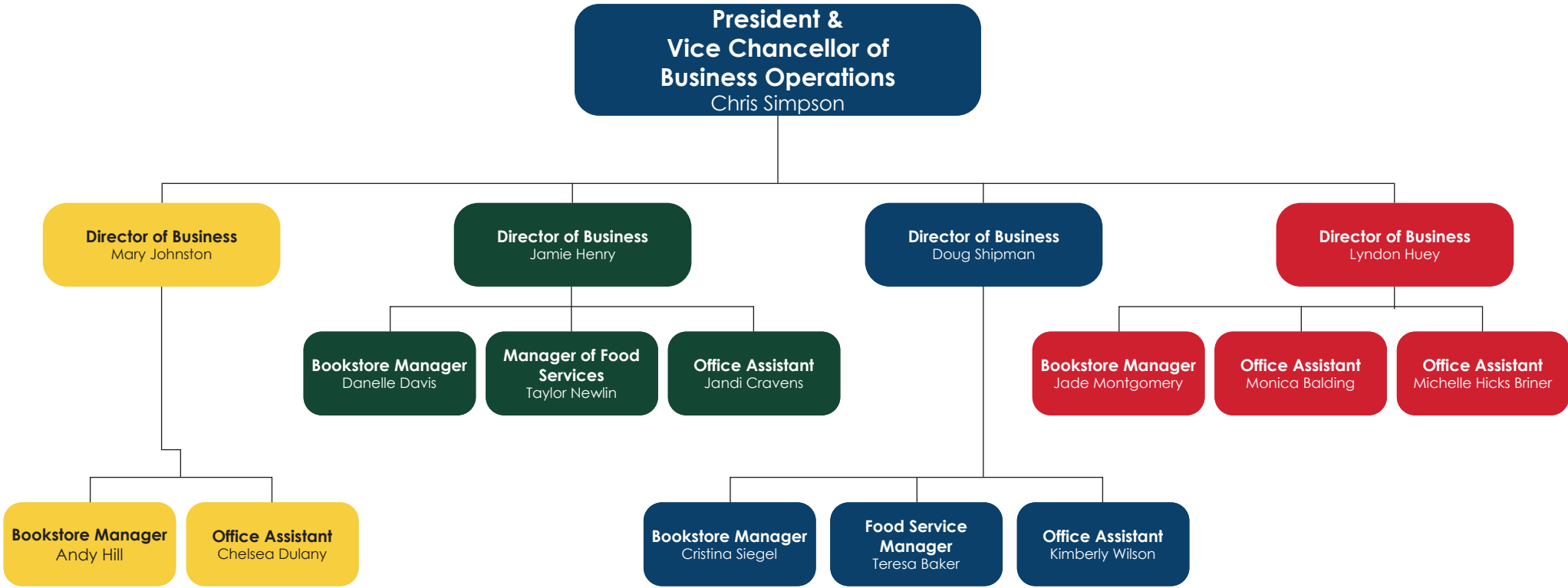
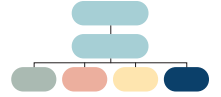
**President &
Vice Chancellor of
Business Operations**
Chris Simpson

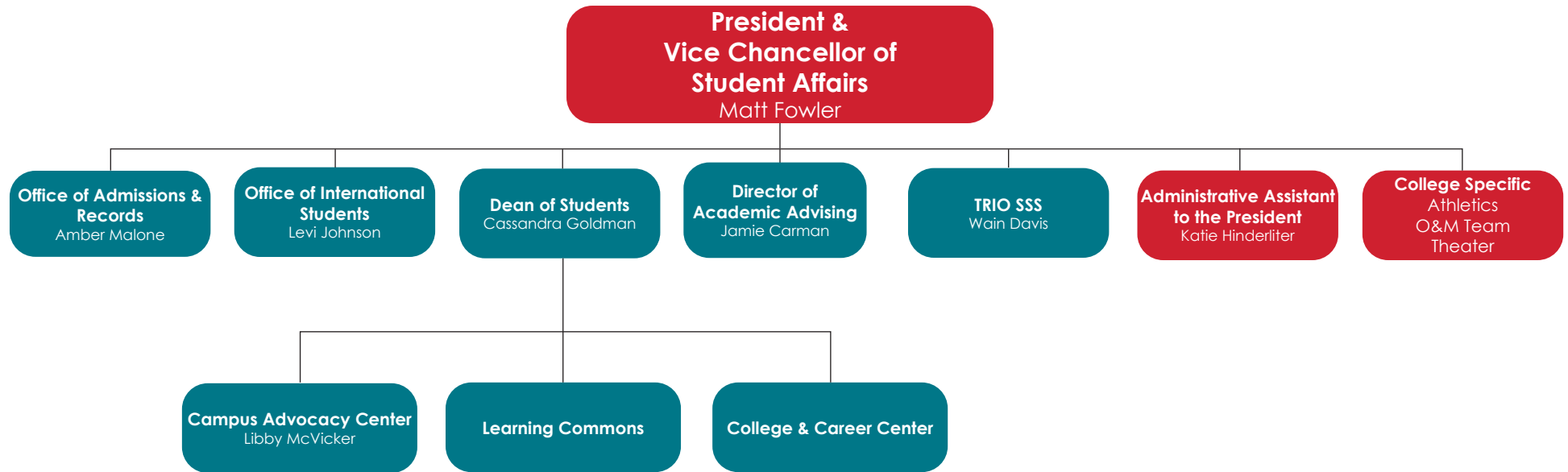
Business Offices

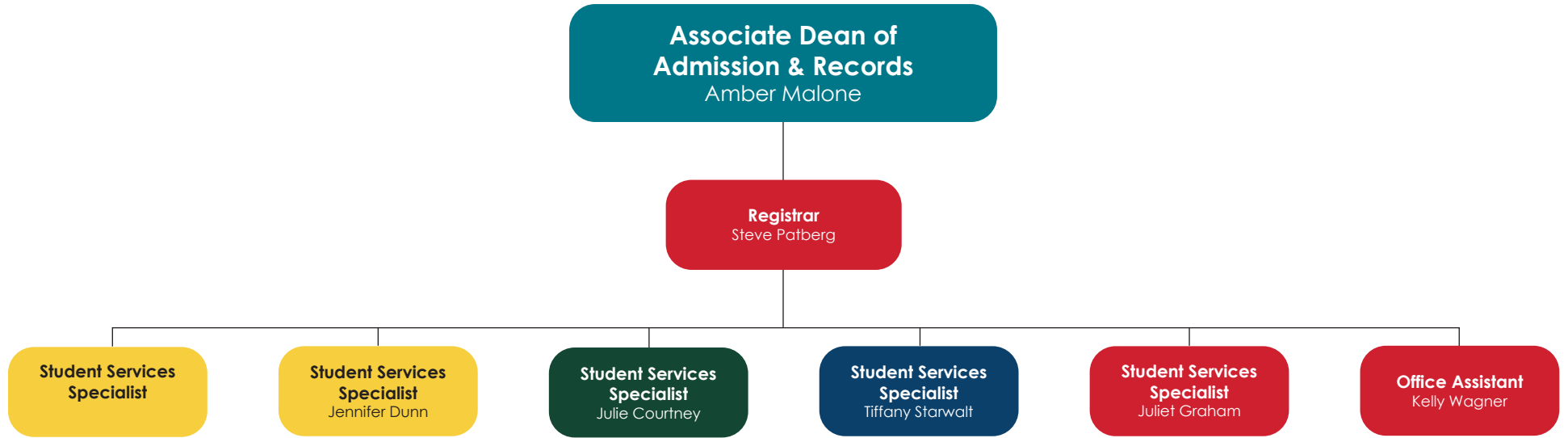
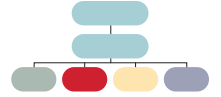
**Administrative Assistant to the
President**
Lynne Welker

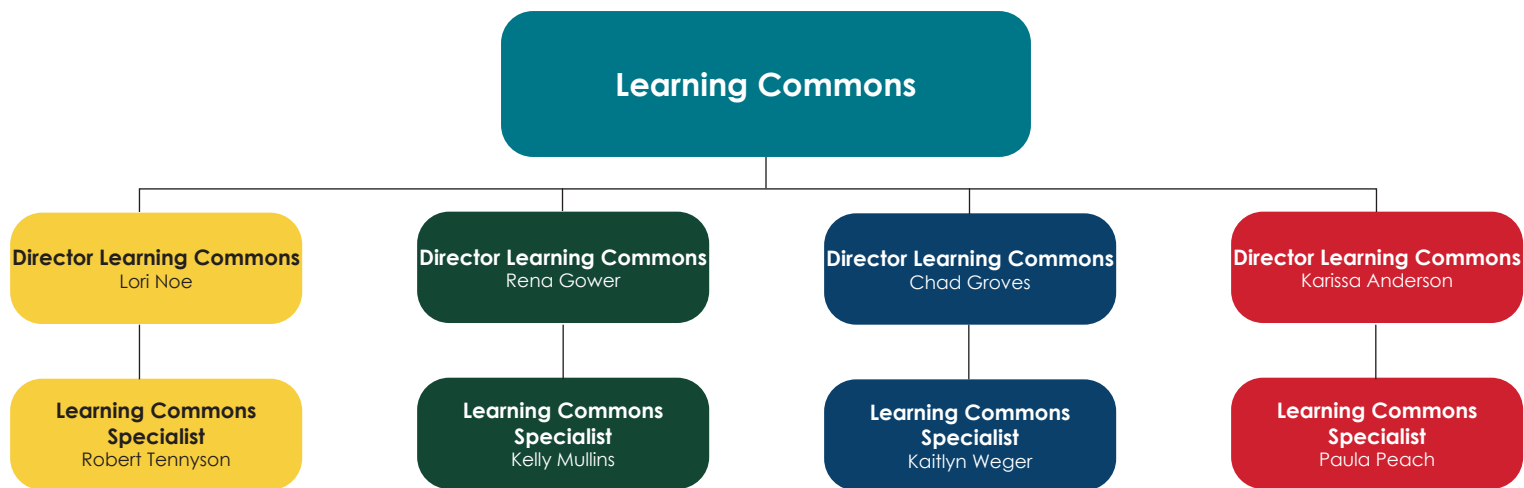
College Specific
Athletics
O&M Team
Theater

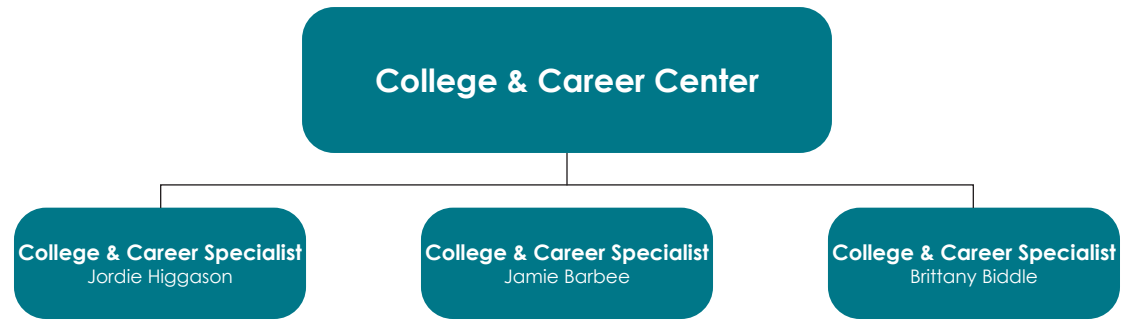


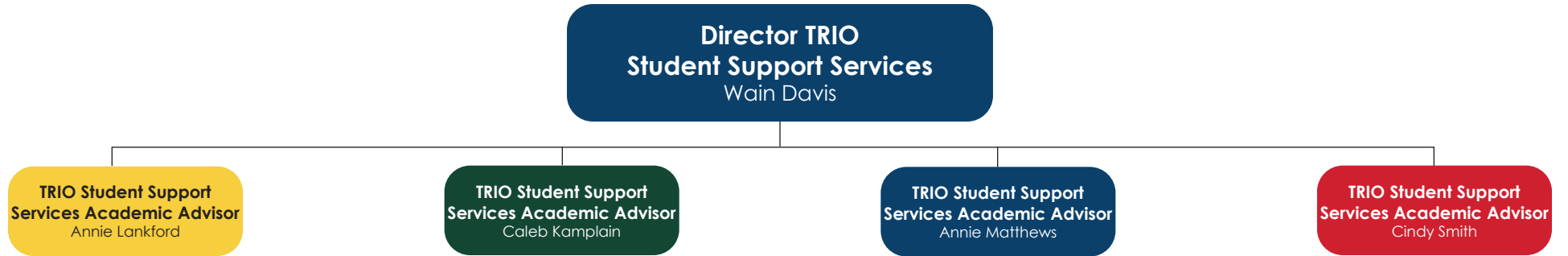
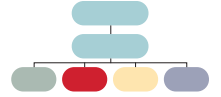














**Director of Academic Advising
and Academic Records**
Jamie Carman



ILLINOIS EASTERN COMMUNITY COLLEGES Administrative Organizational Chart

