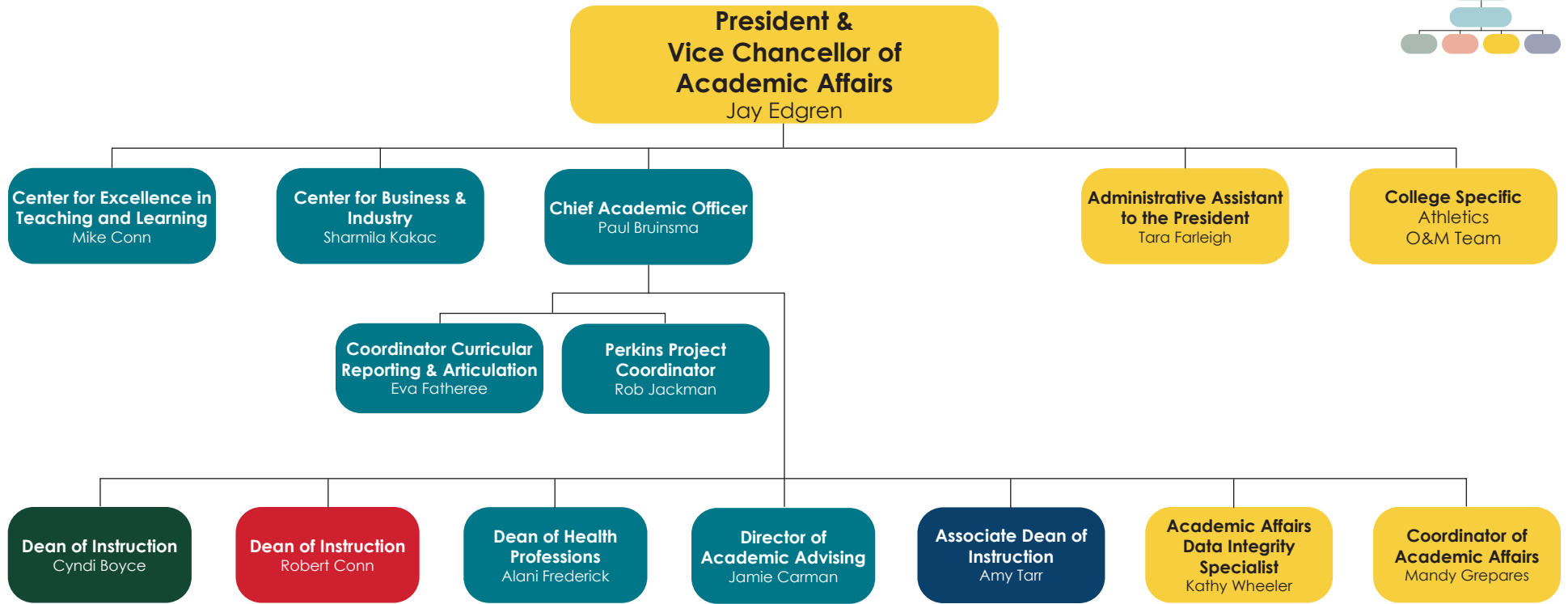
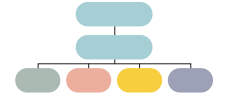
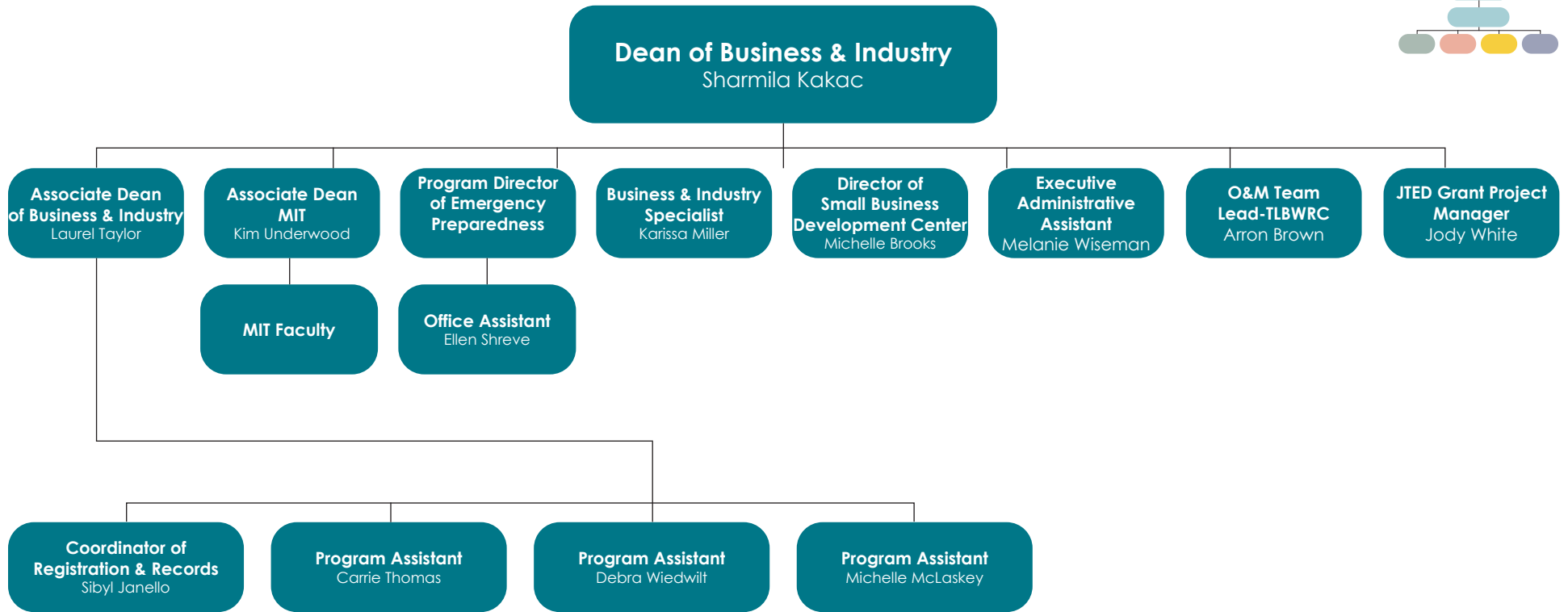
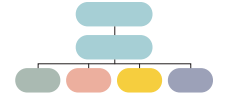


ILLINOIS EASTERN COMMUNITY COLLEGES Administrative Organizational Chart

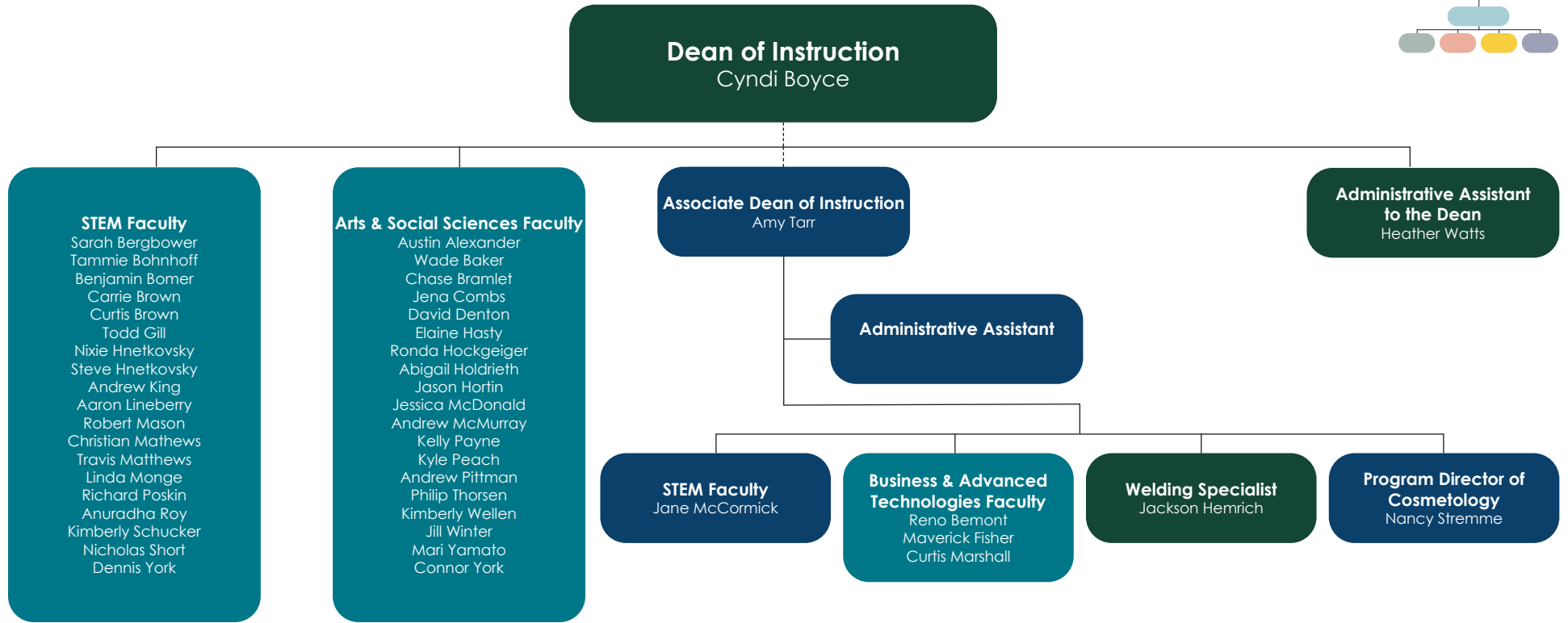
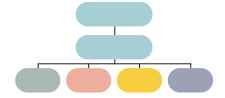




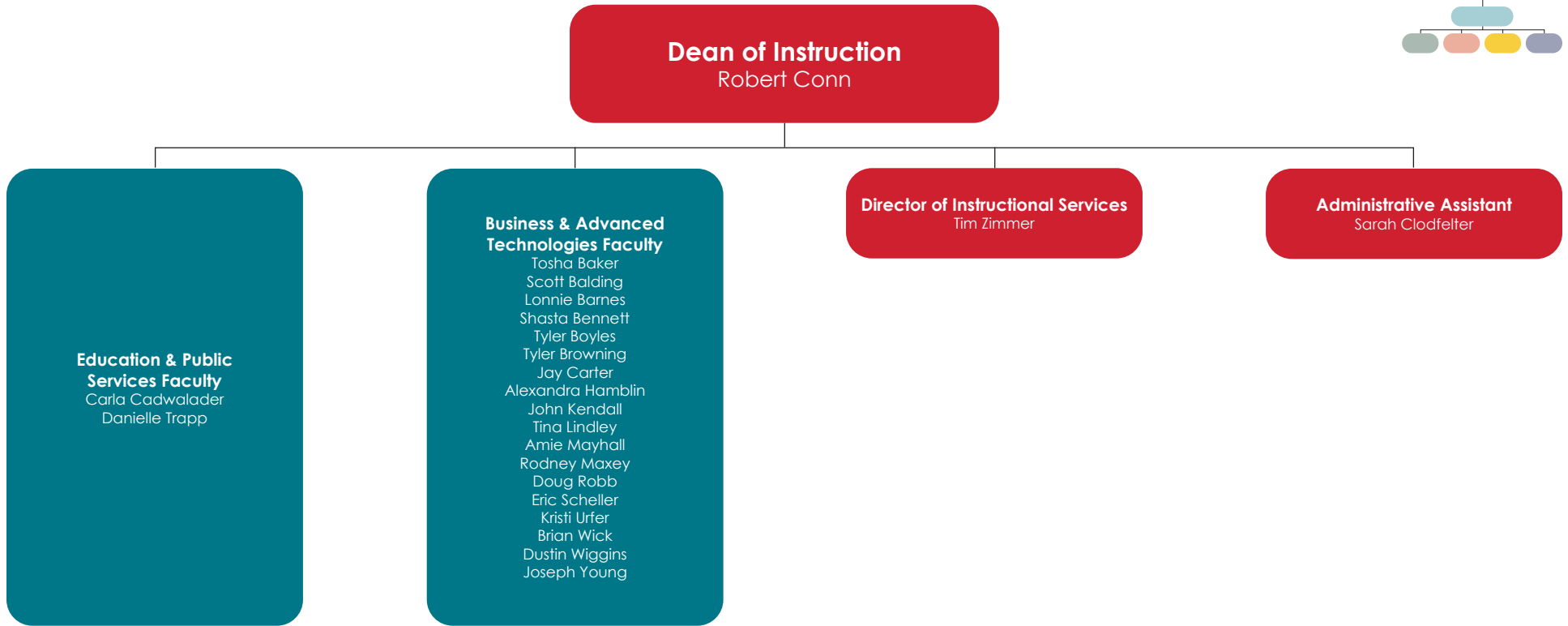
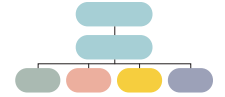
ILLINOIS EASTERN COMMUNITY COLLEGES Administrative Organizational Chart

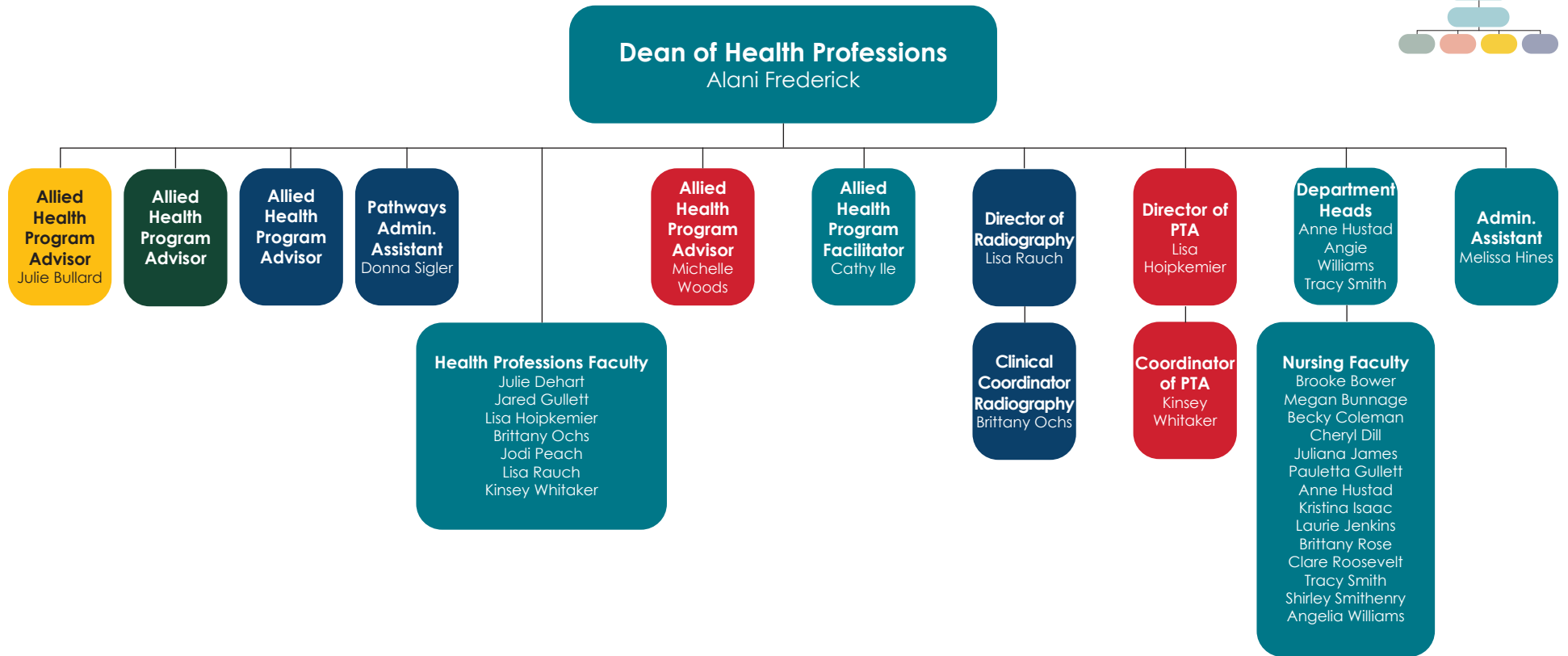
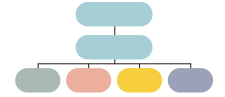


ILLINOIS EASTERN COMMUNITY COLLEGES Administrative Organizational Chart



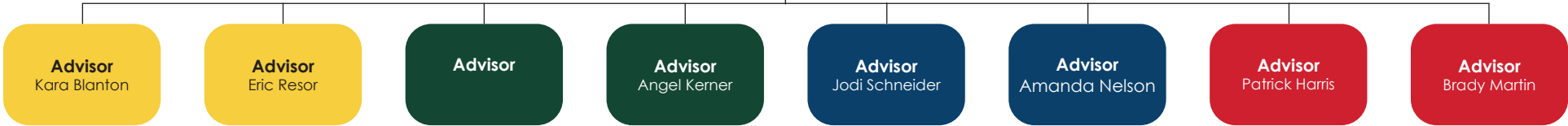
ILLINOIS EASTERN COMMUNITY COLLEGES Administrative Organizational Chart

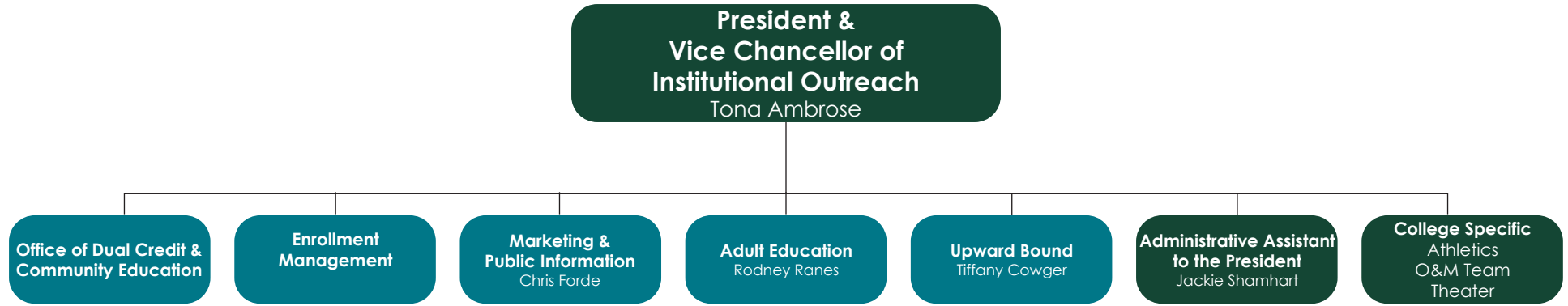
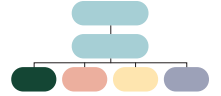


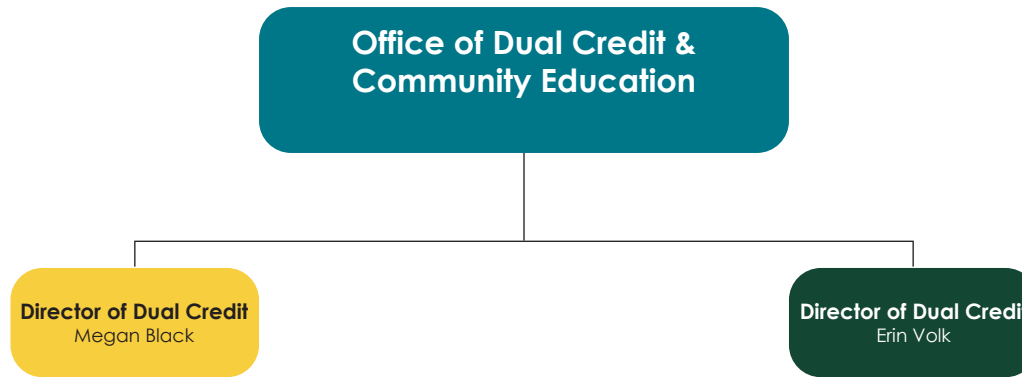
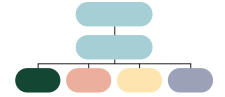


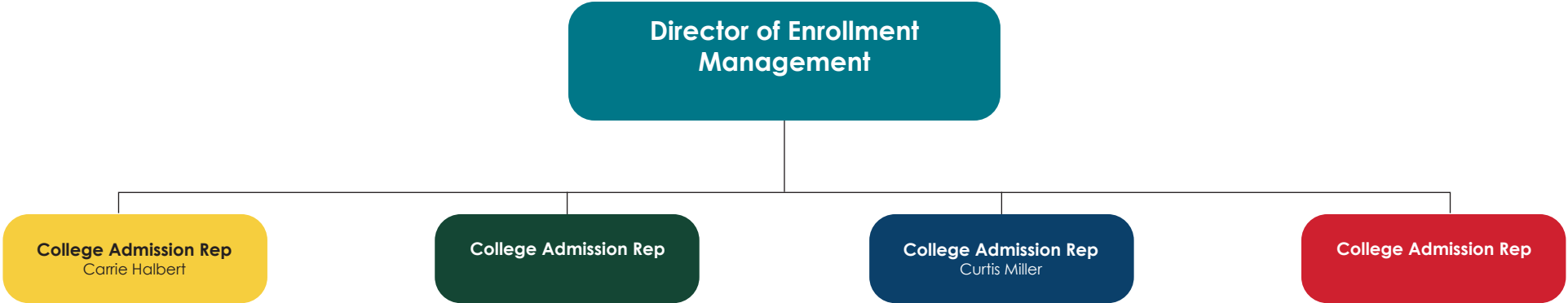
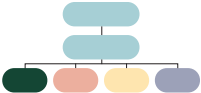


**Director of Academic Advising  
and Academic Records**  
Jamie Carman

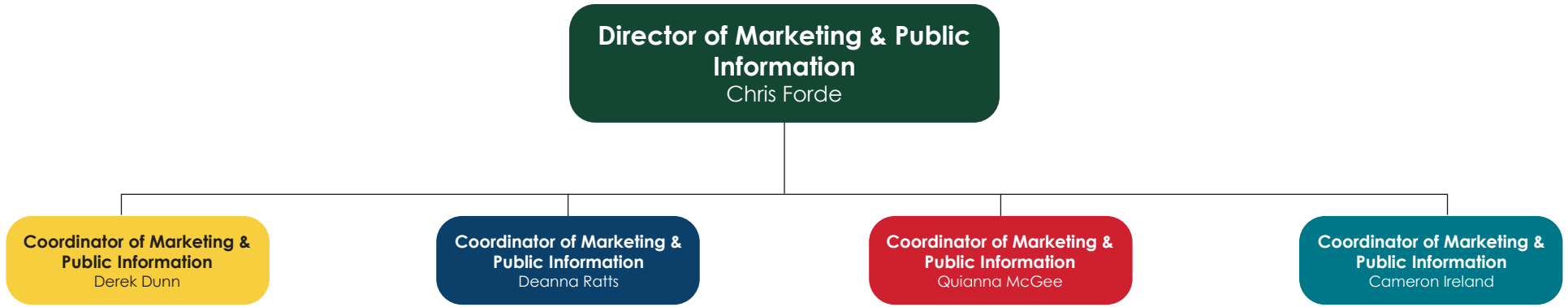
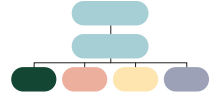


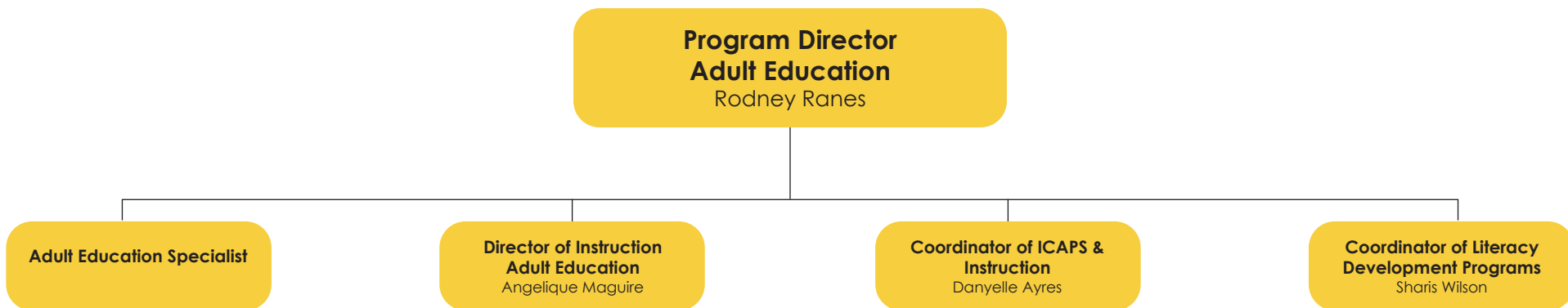


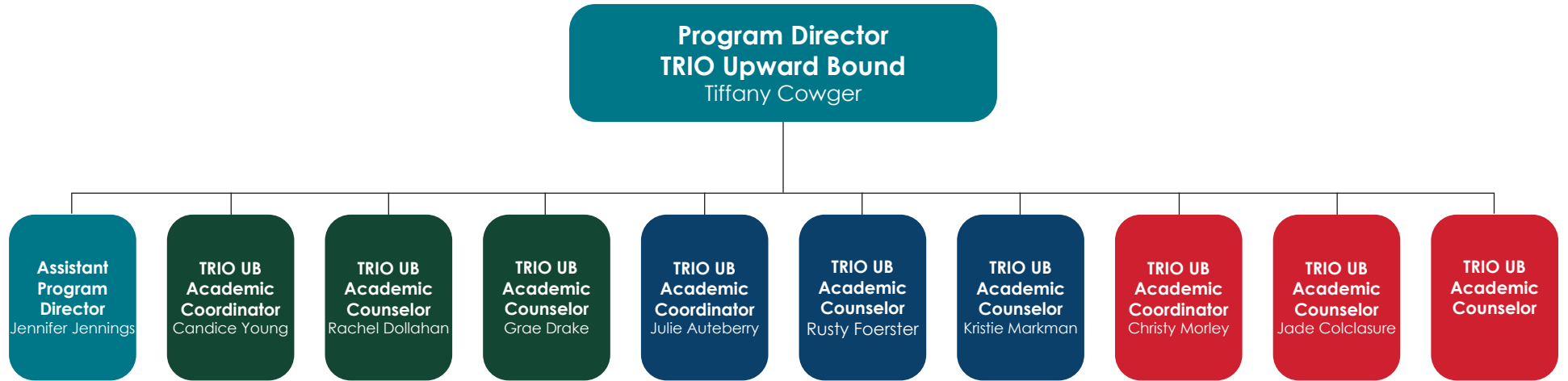
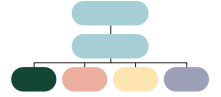


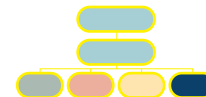












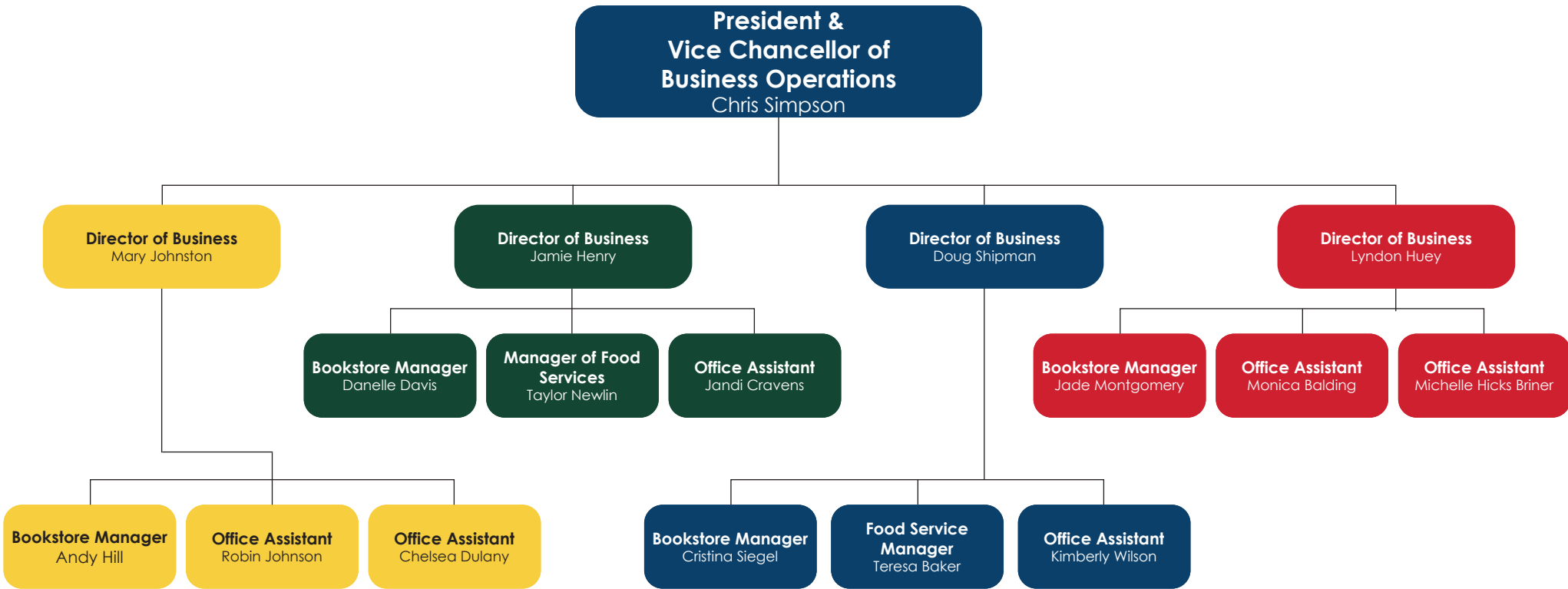
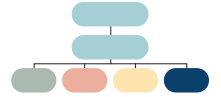
**President &  
Vice Chancellor of  
Business Operations**  
Chris Simpson

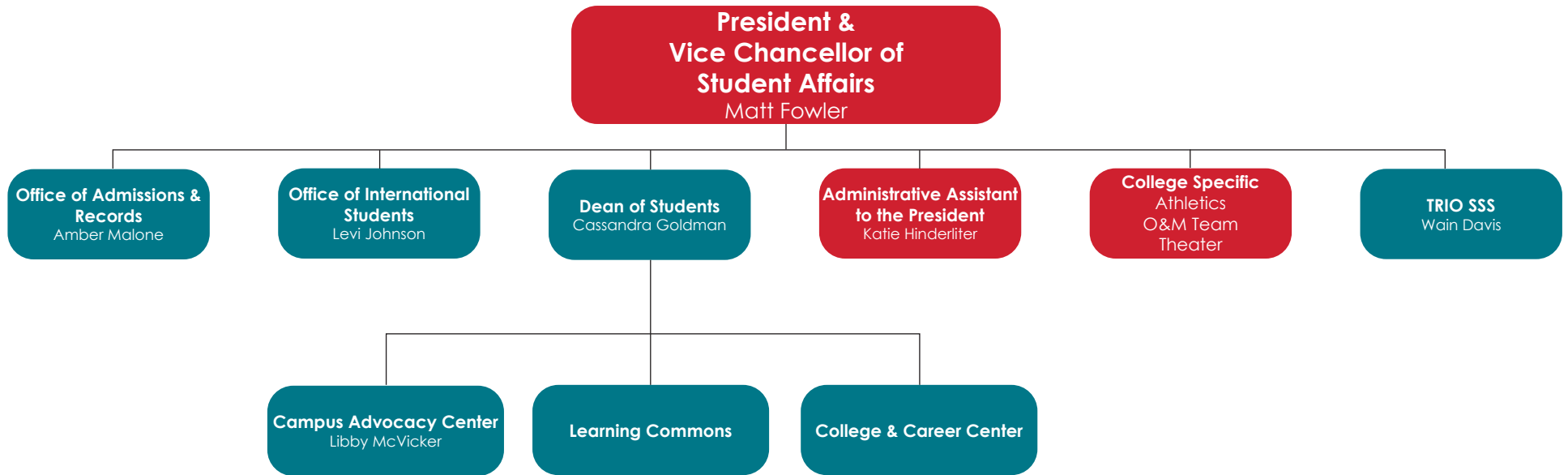
**Business Offices**

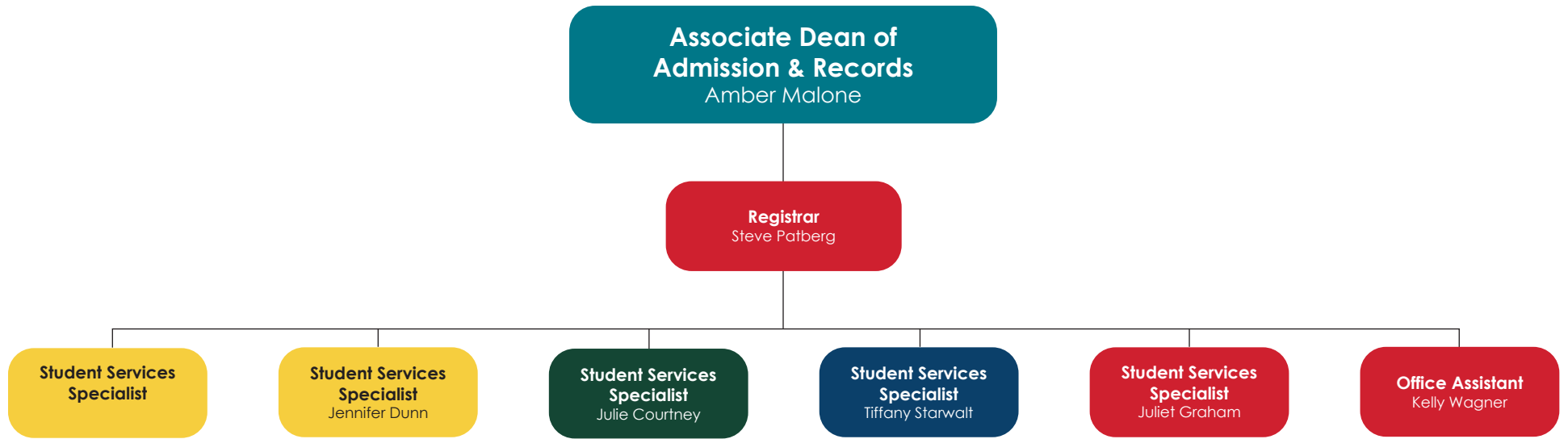
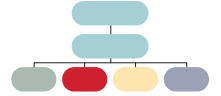
**Administrative Assistant to the  
President**  
Lynne Welker

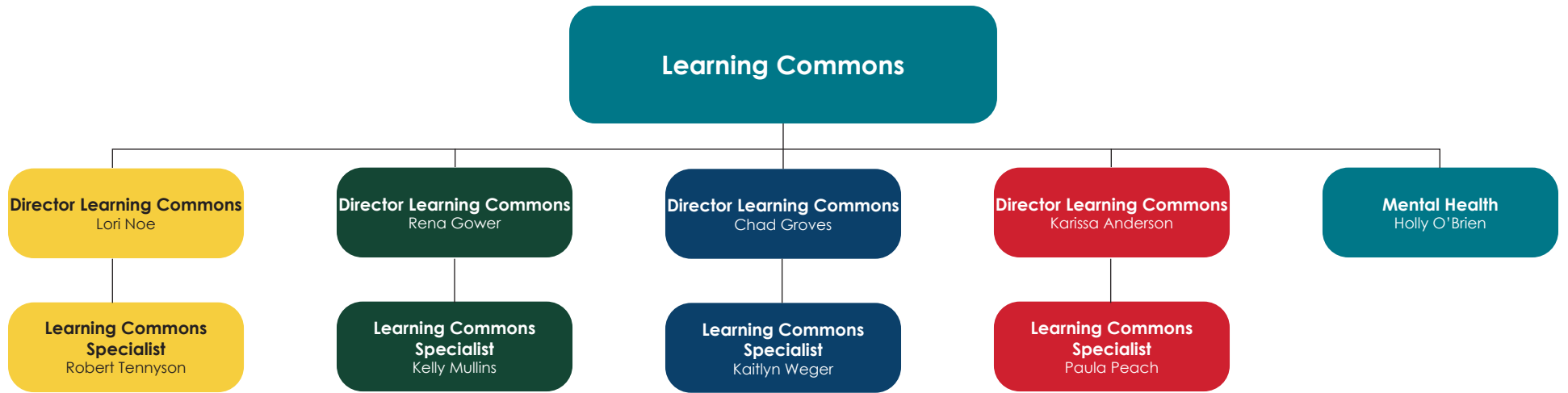
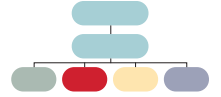
**College Specific**  
Athletics  
O&M Team  
Theater



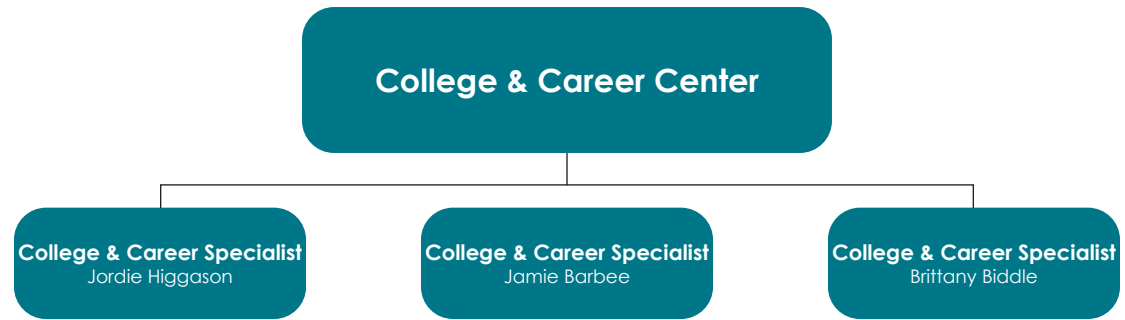


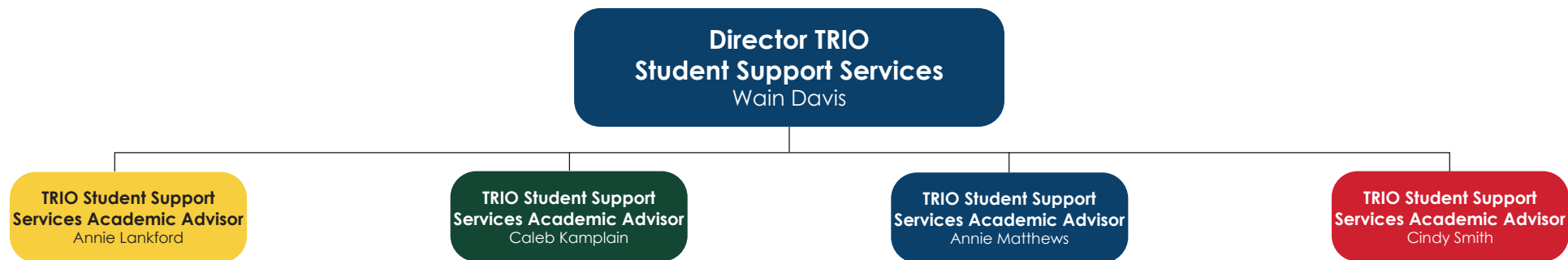












ILLINOIS EASTERN COMMUNITY COLLEGES Administrative Organizational Chart

