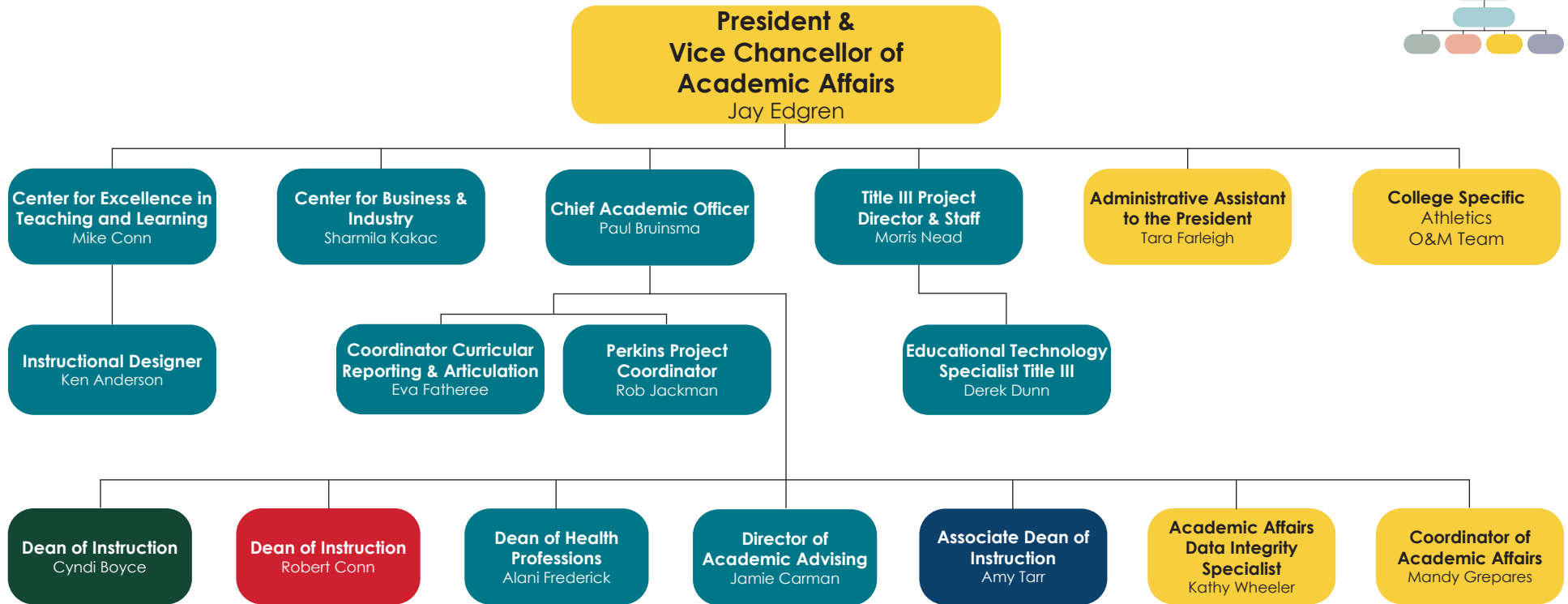
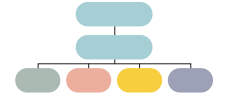
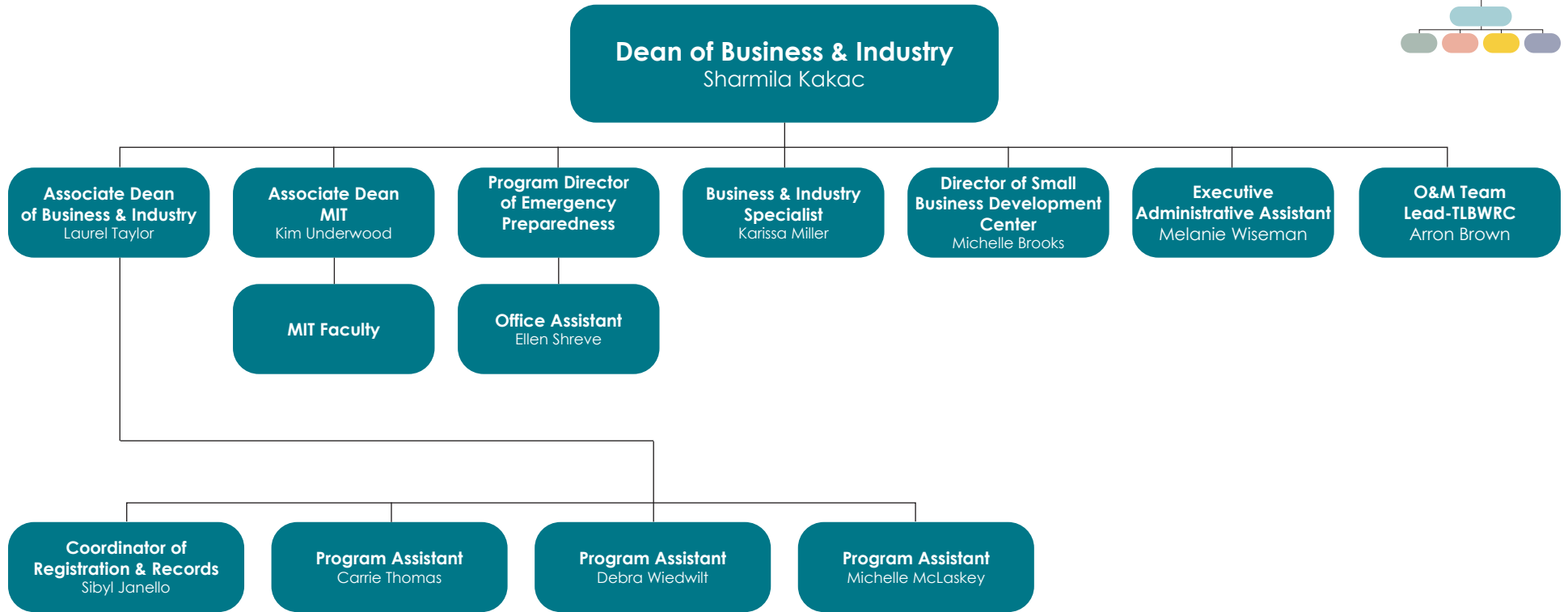
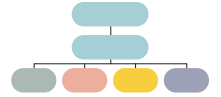


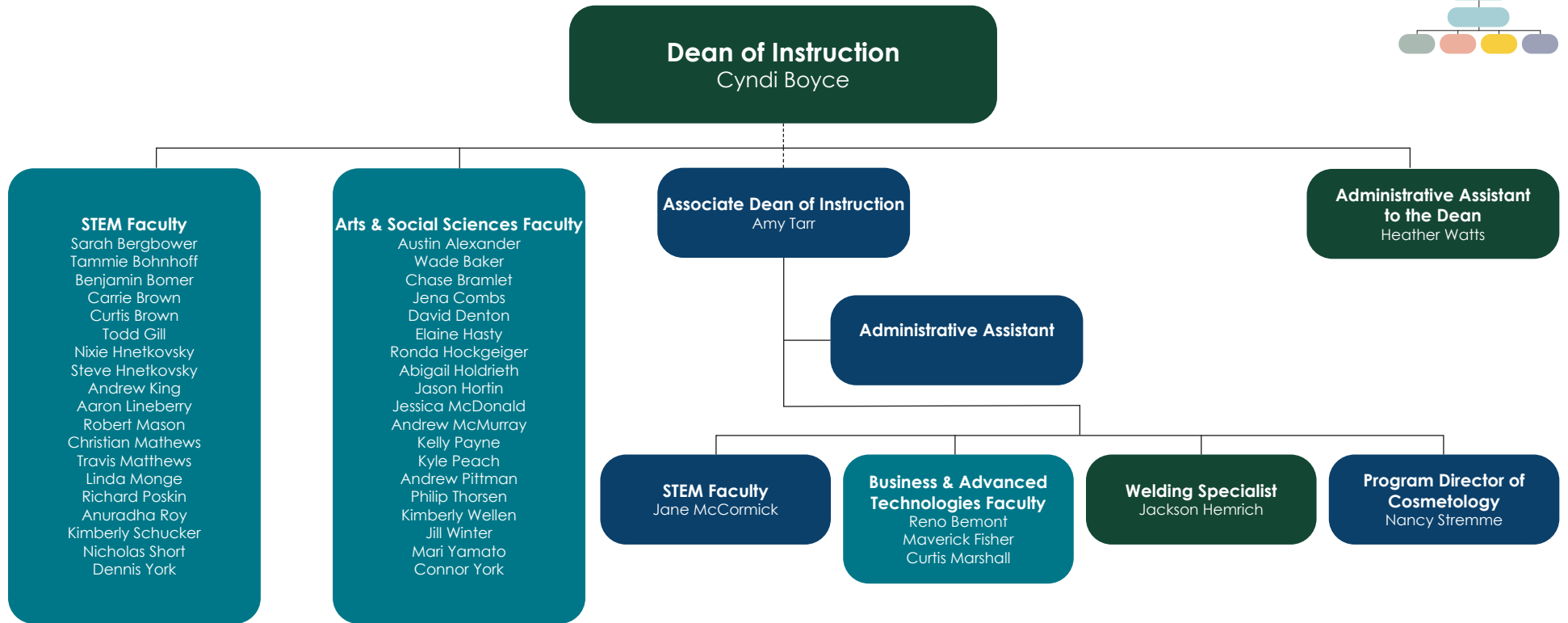
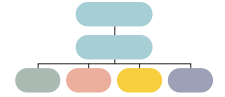
ILLINOIS EASTERN COMMUNITY COLLEGES Administrative Organizational Chart

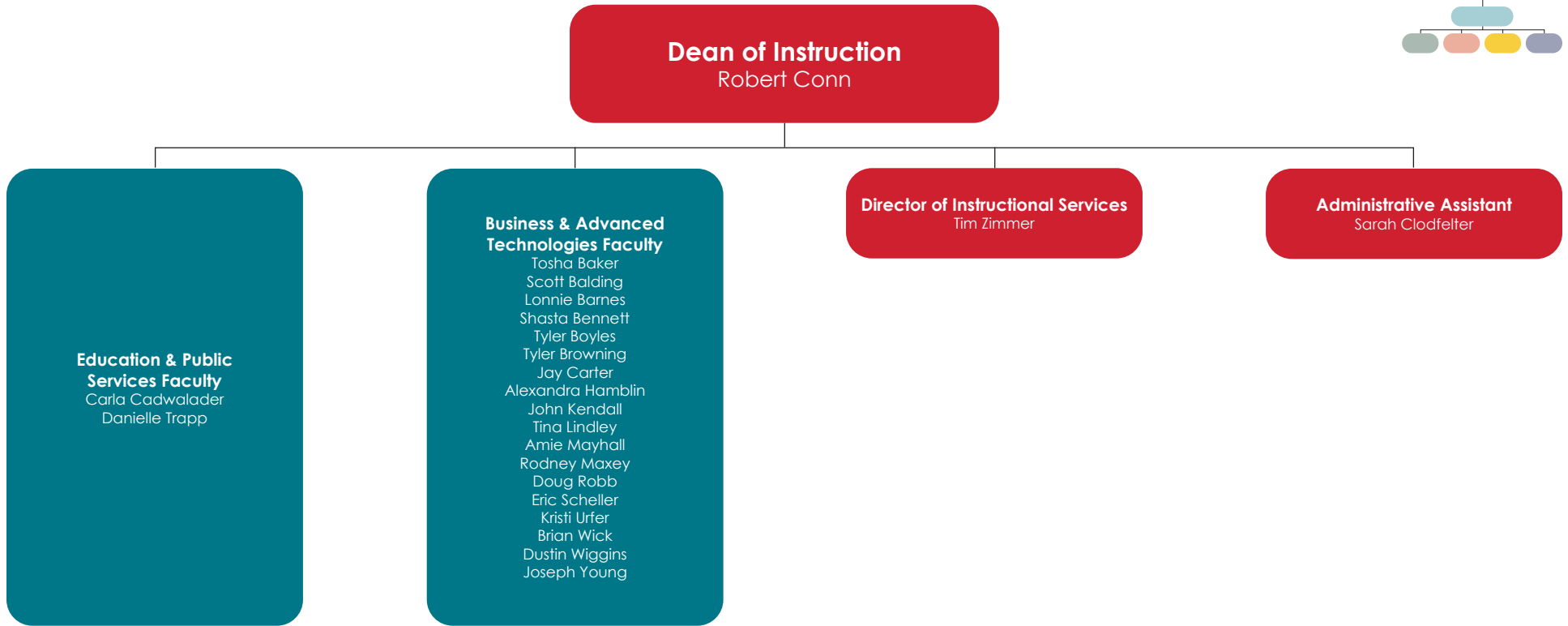
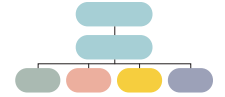


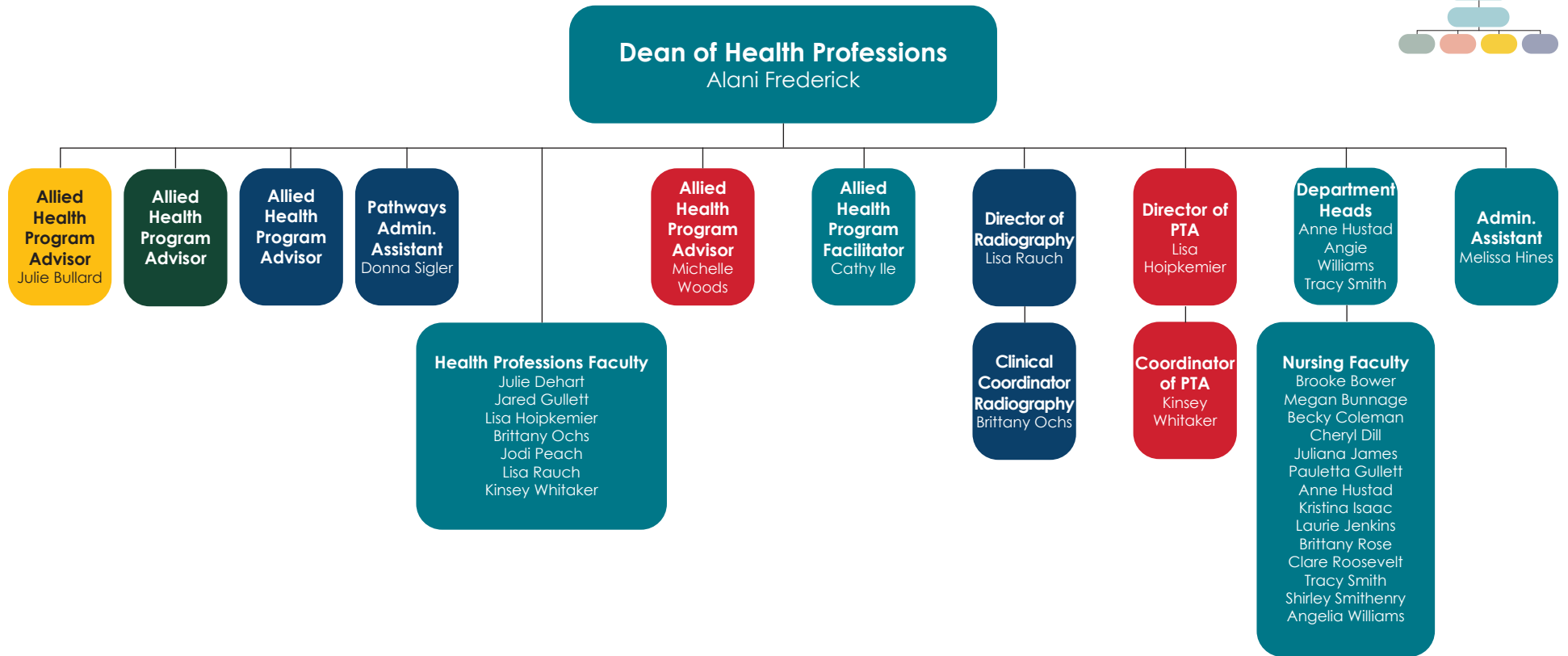
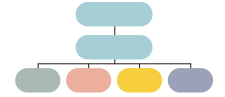
ILLINOIS EASTERN COMMUNITY COLLEGES Administrative Organizational Chart



ILLINOIS EASTERN COMMUNITY COLLEGES Administrative Organizational Chart

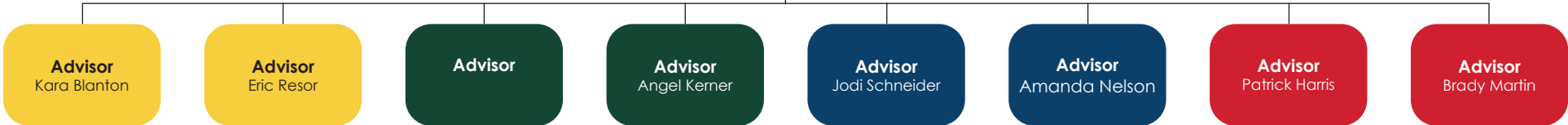


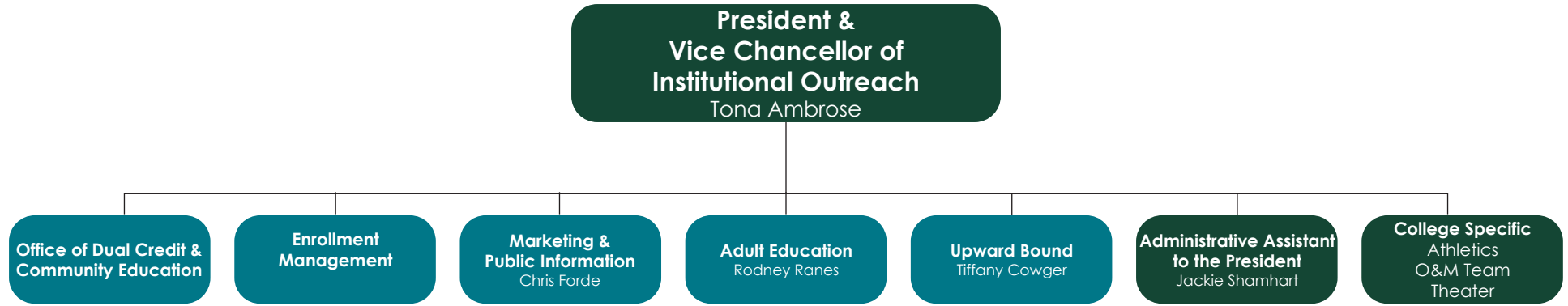
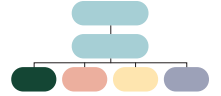


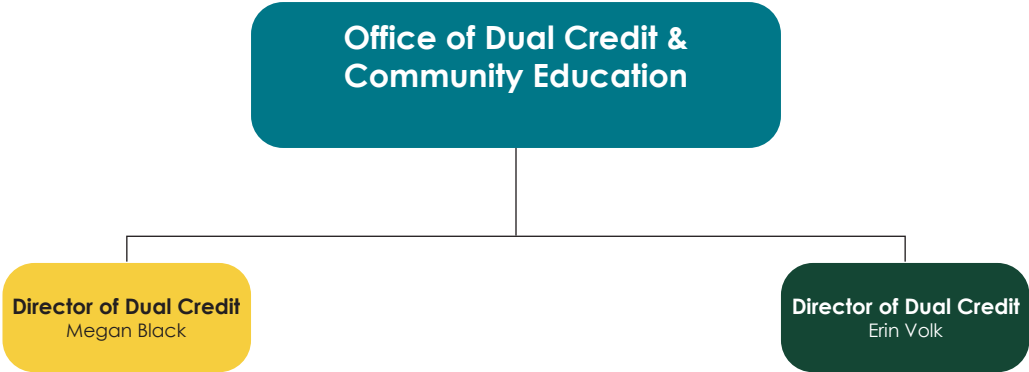
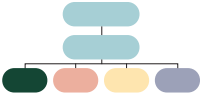


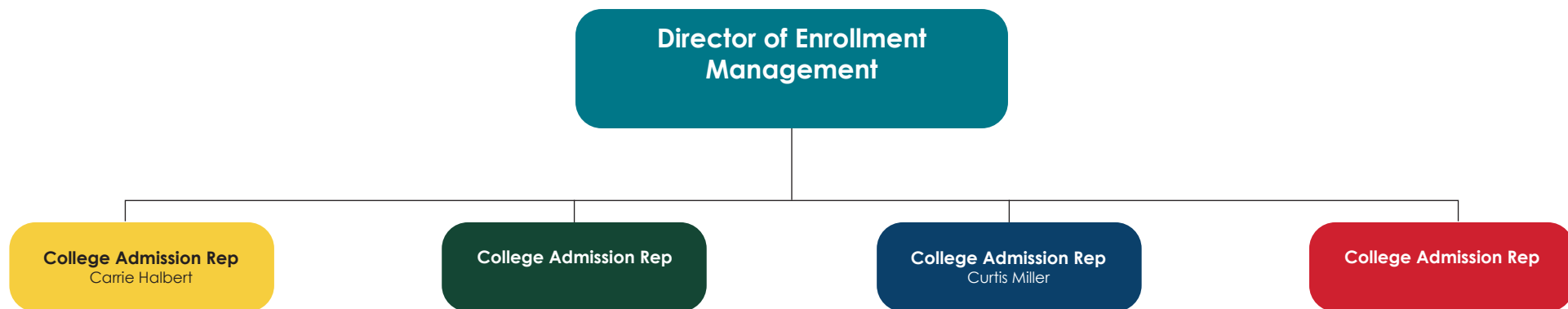


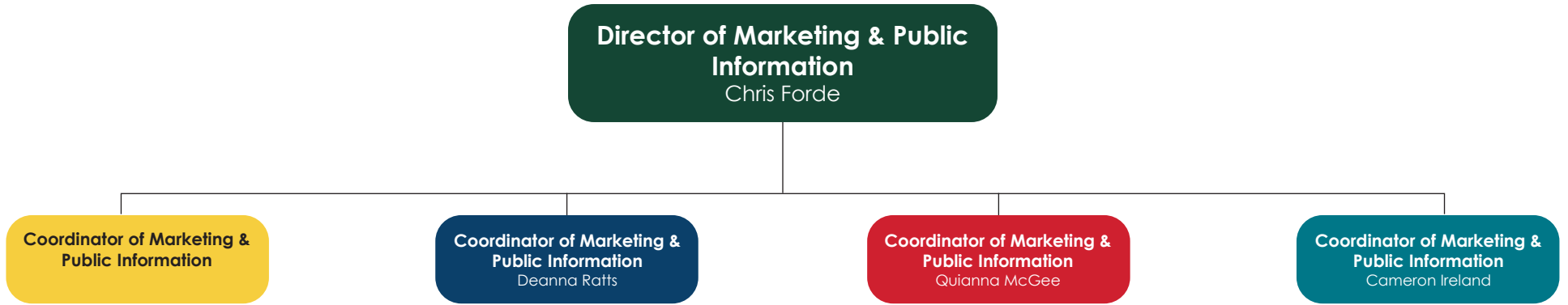
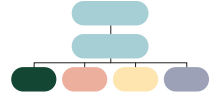
**Director of Academic Advising
and Academic Records**
Jamie Carman

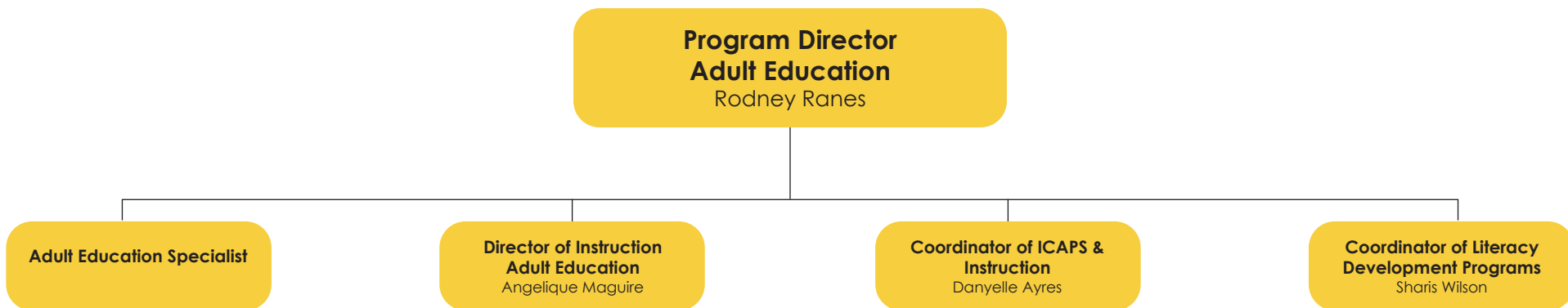


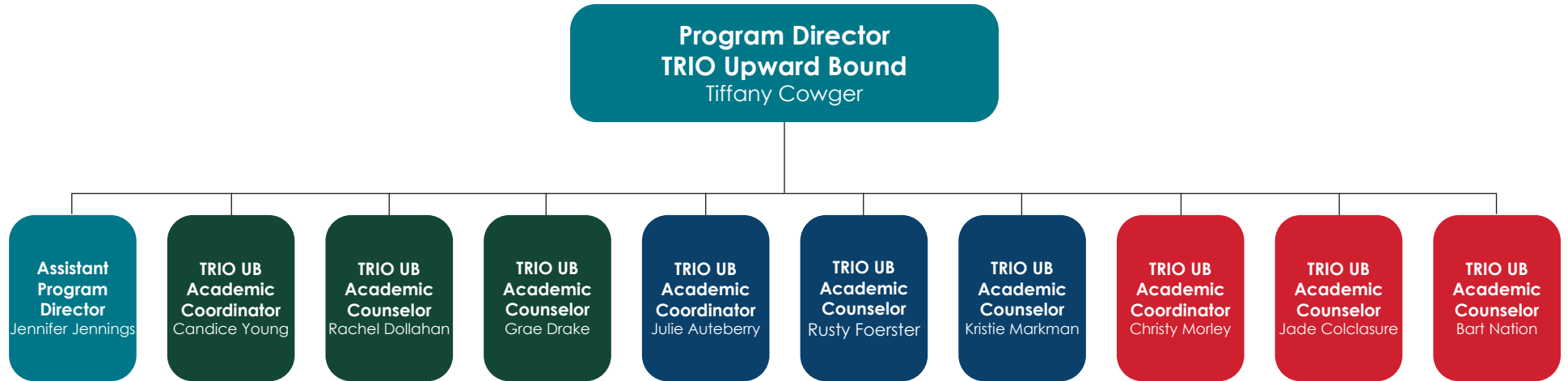
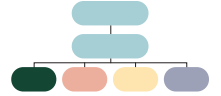


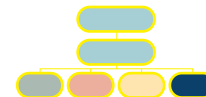












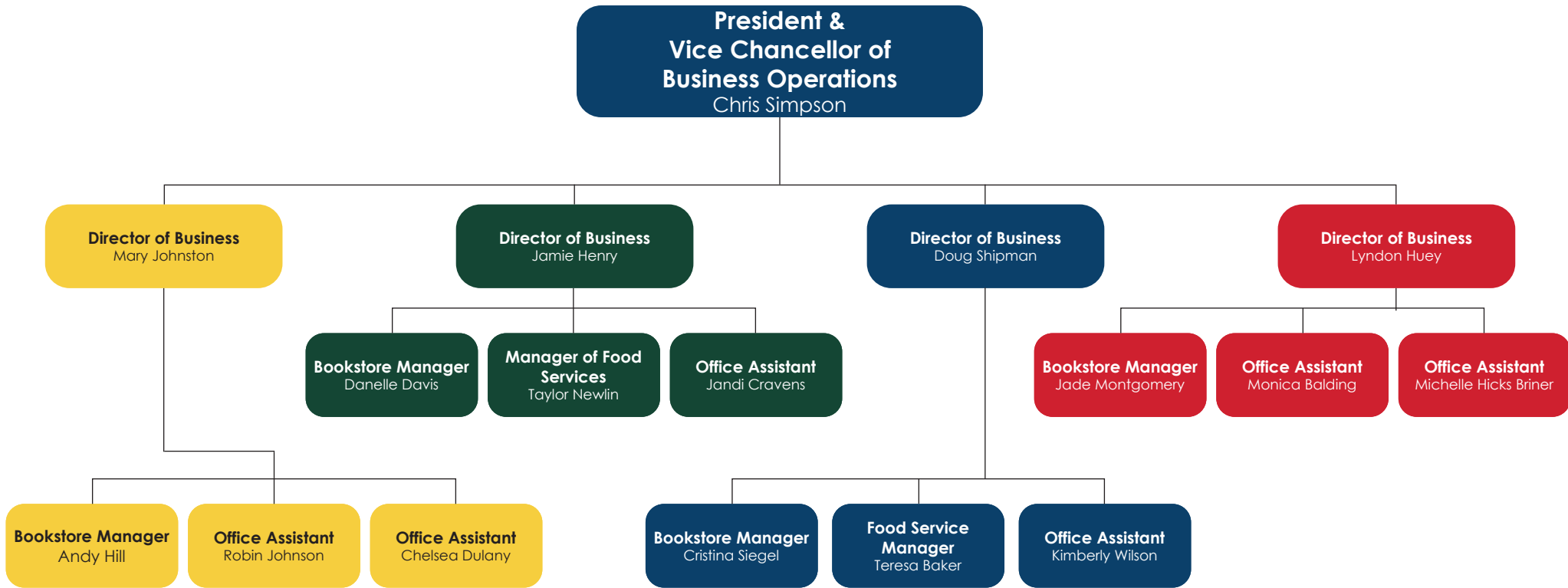
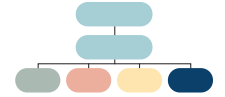
**President &
Vice Chancellor of
Business Operations**
Chris Simpson

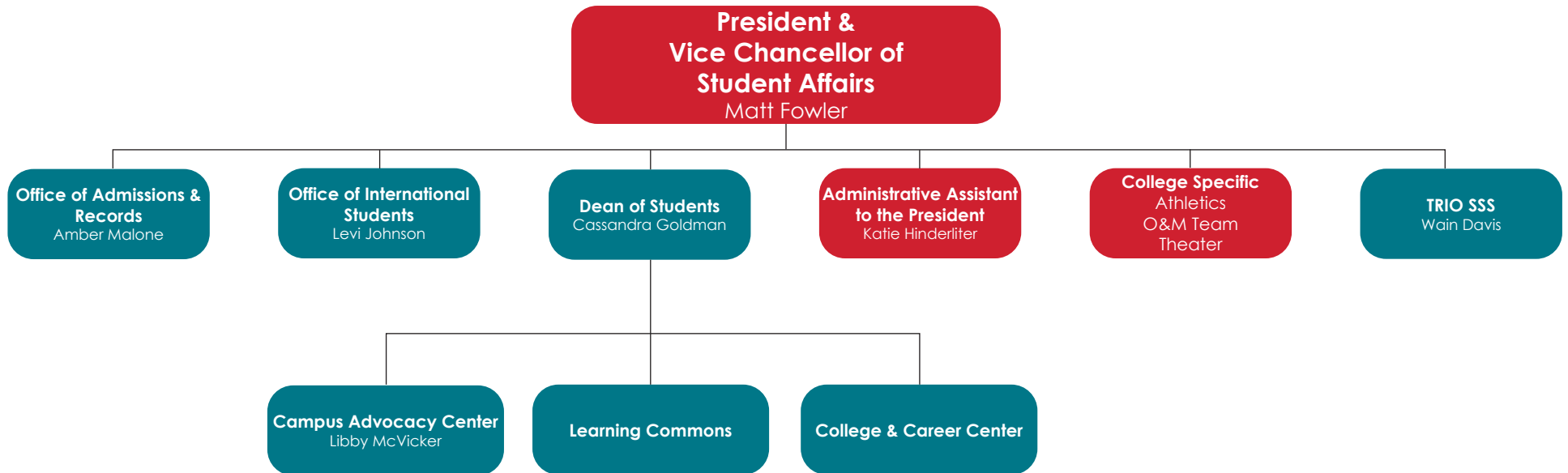
Business Offices

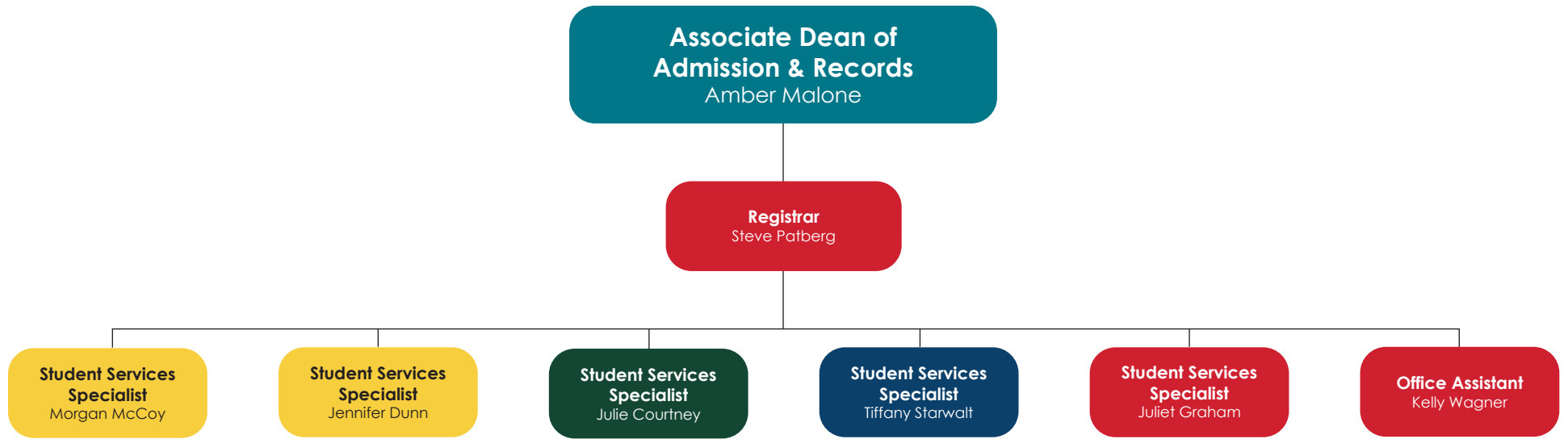
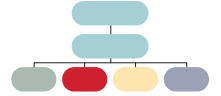
**Administrative Assistant to the
President**
Lynne Welker

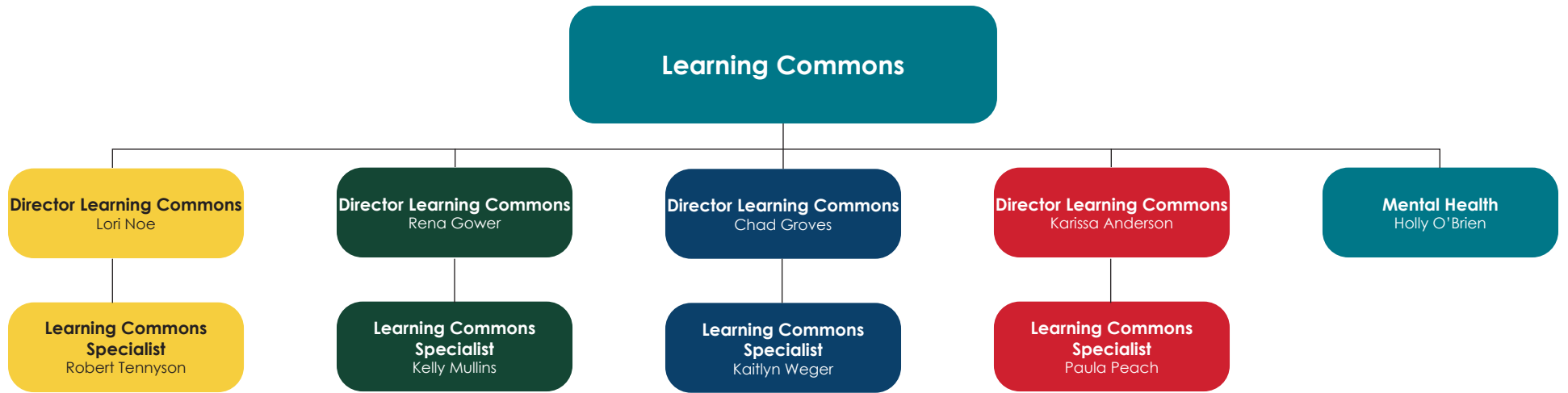
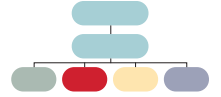
College Specific
Athletics
O&M Team
Theater

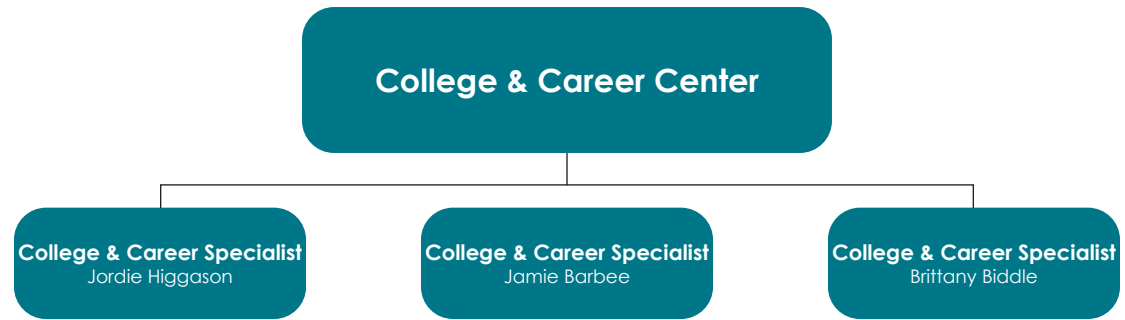


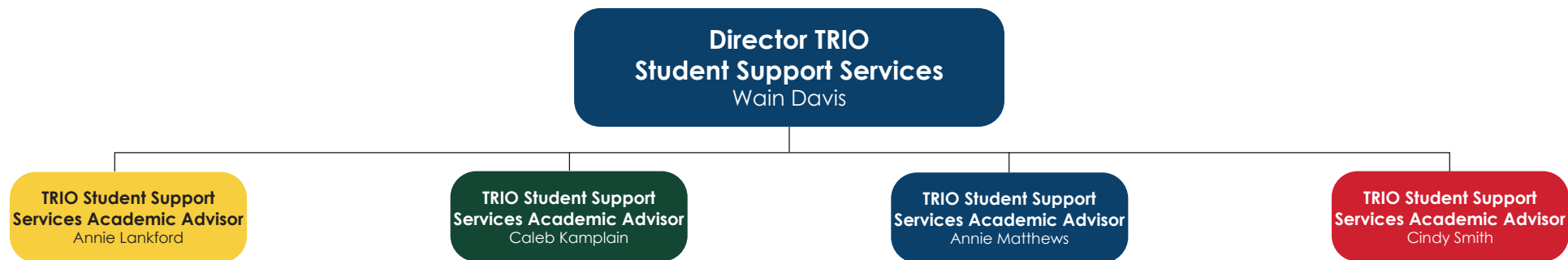












ILLINOIS EASTERN COMMUNITY COLLEGES Administrative Organizational Chart

