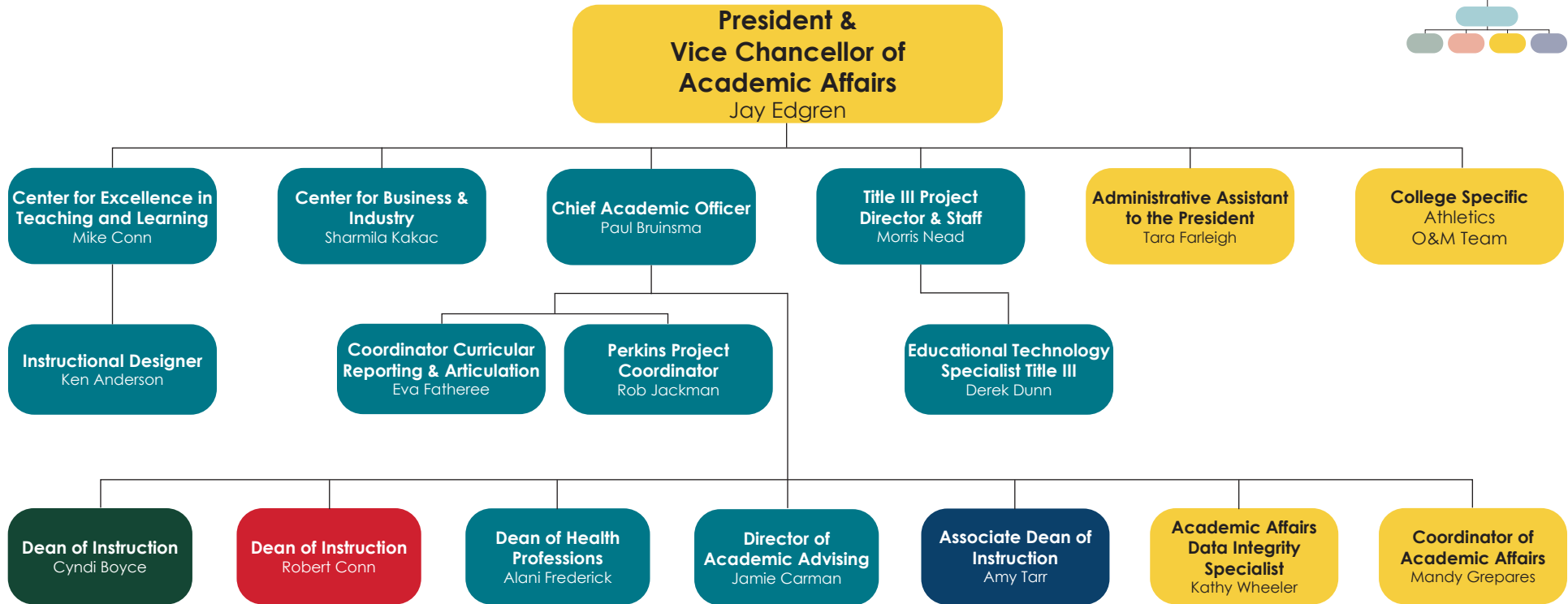
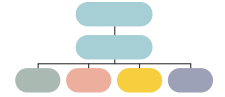
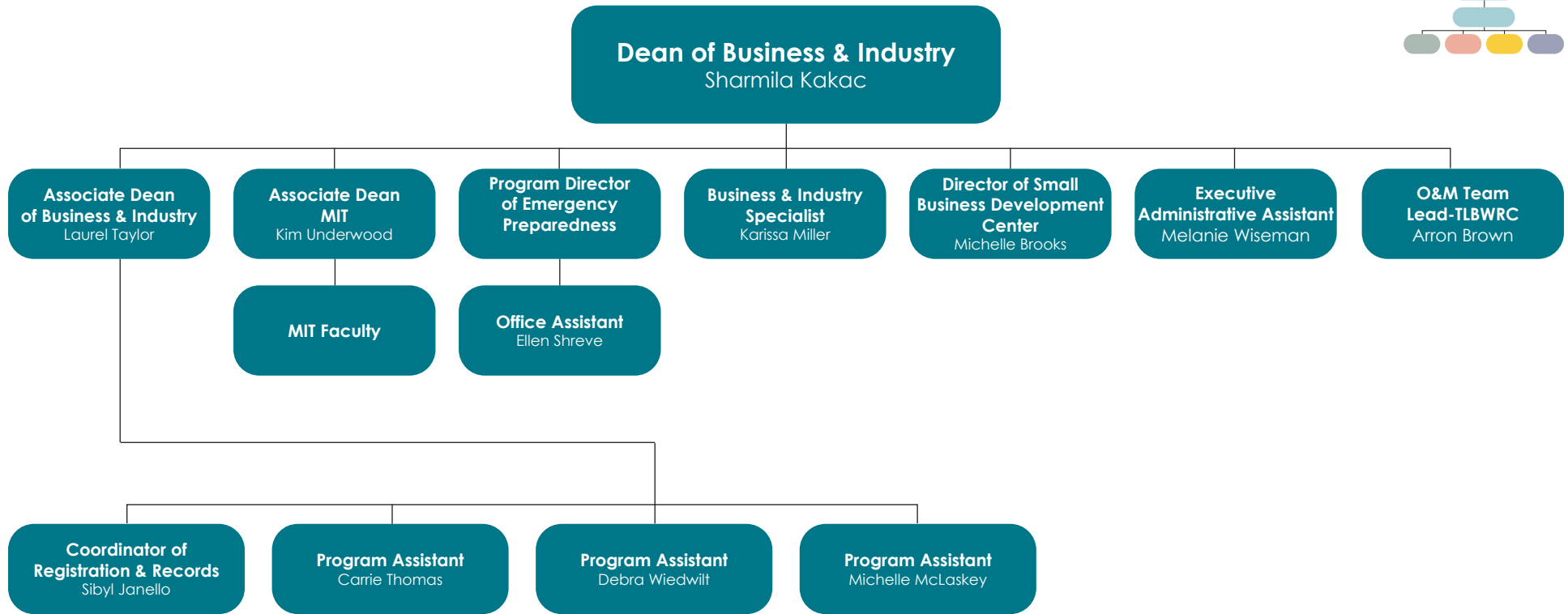
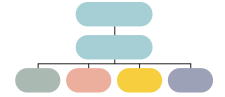


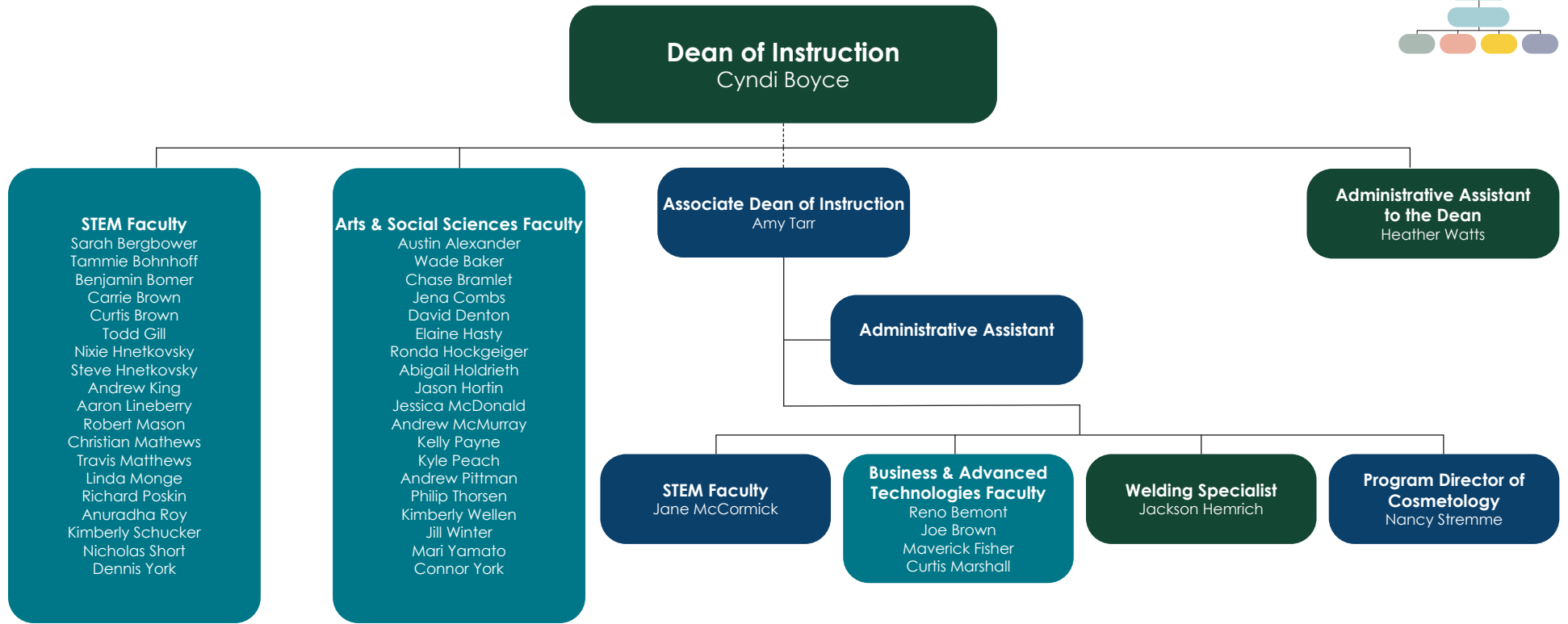
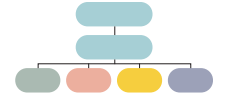
ILLINOIS EASTERN COMMUNITY COLLEGES Administrative Organizational Chart



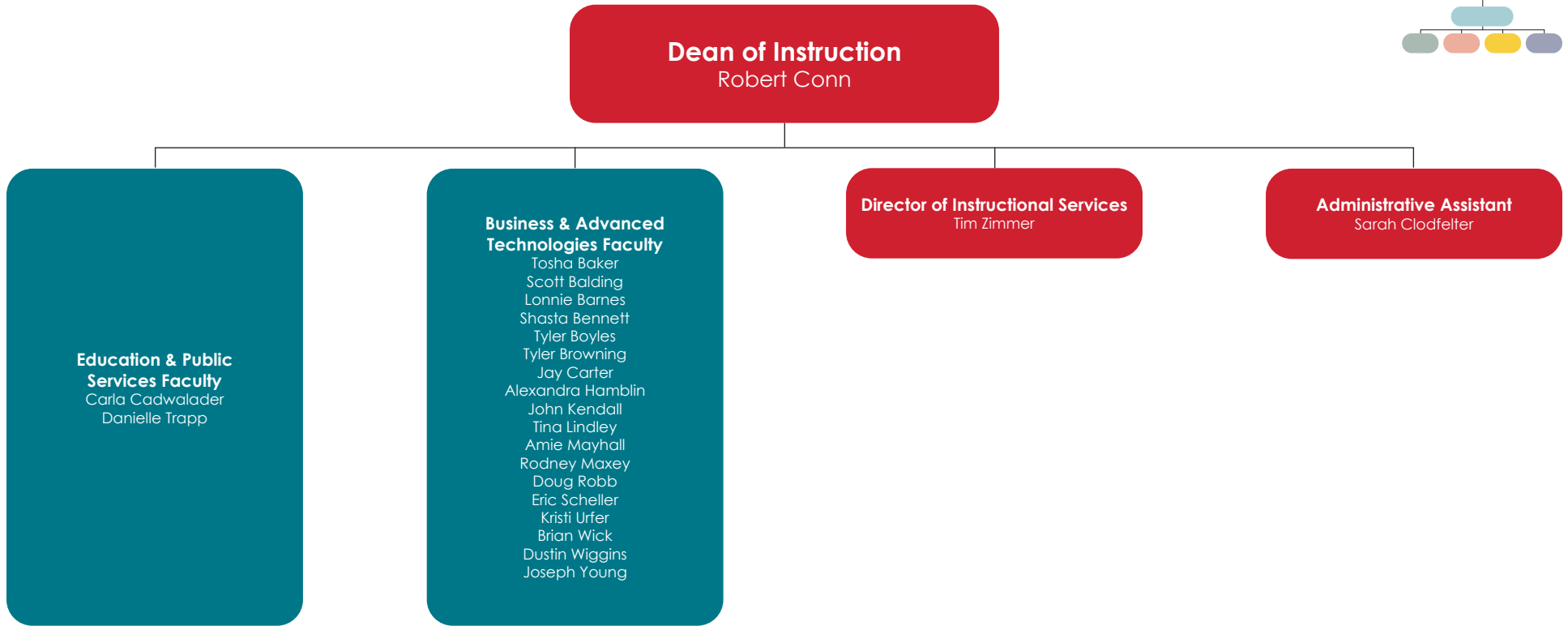
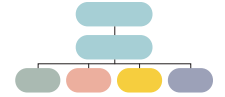
ILLINOIS EASTERN COMMUNITY COLLEGES Administrative Organizational Chart



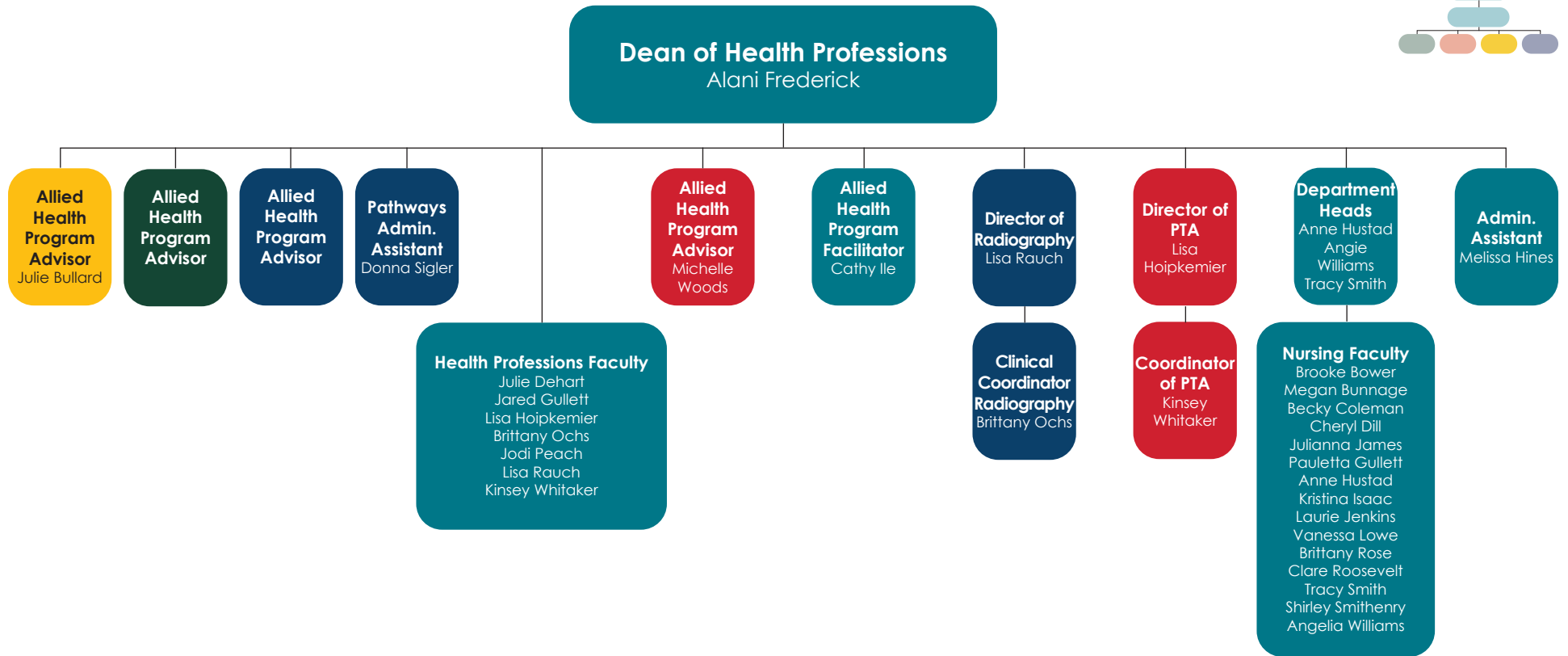
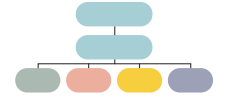
ILLINOIS EASTERN COMMUNITY COLLEGES Administrative Organizational Chart



ILLINOIS EASTERN COMMUNITY COLLEGES Administrative Organizational Chart

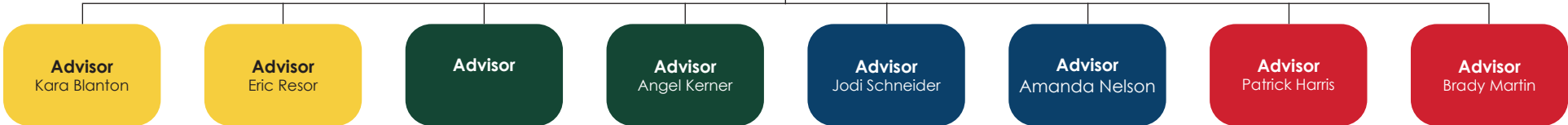


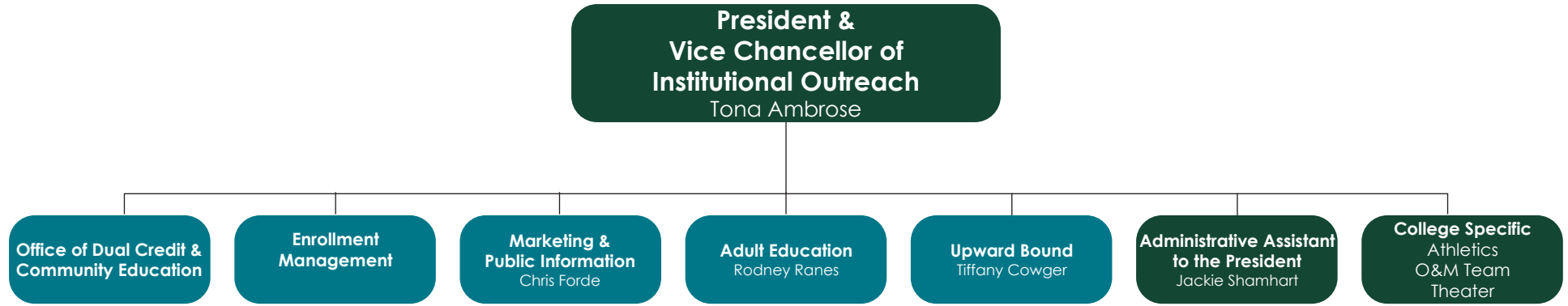
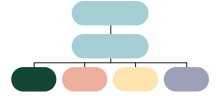
ILLINOIS EASTERN COMMUNITY COLLEGES Administrative Organizational Chart

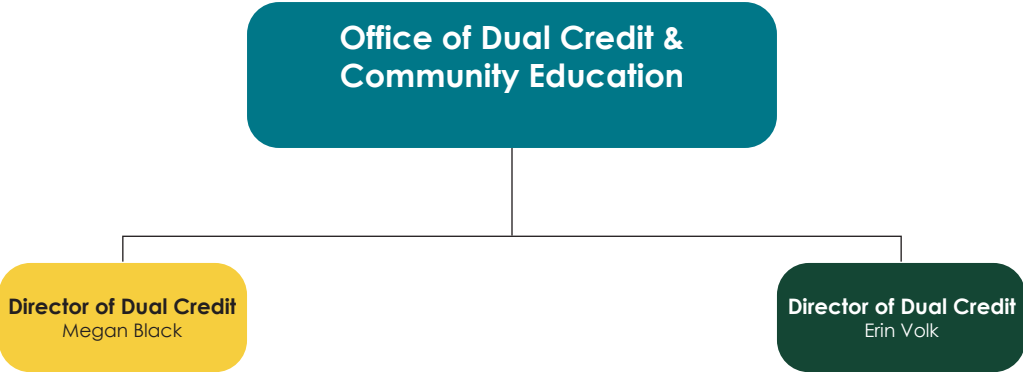
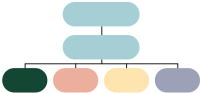


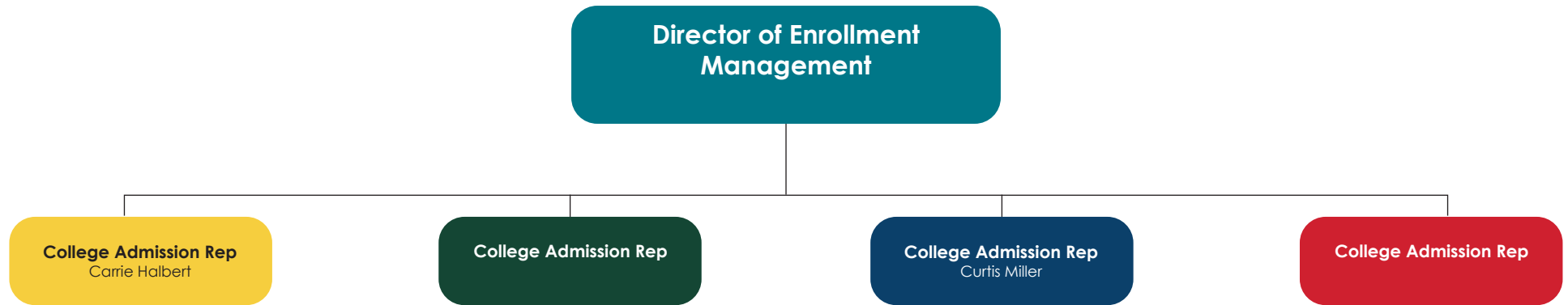
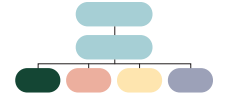


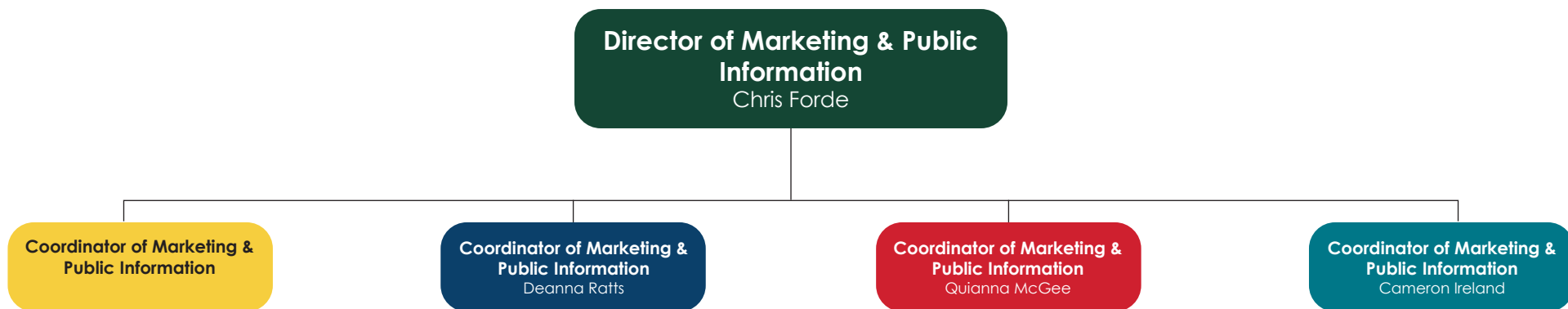
**Director of Academic Advising
and Academic Records**
Jamie Carman

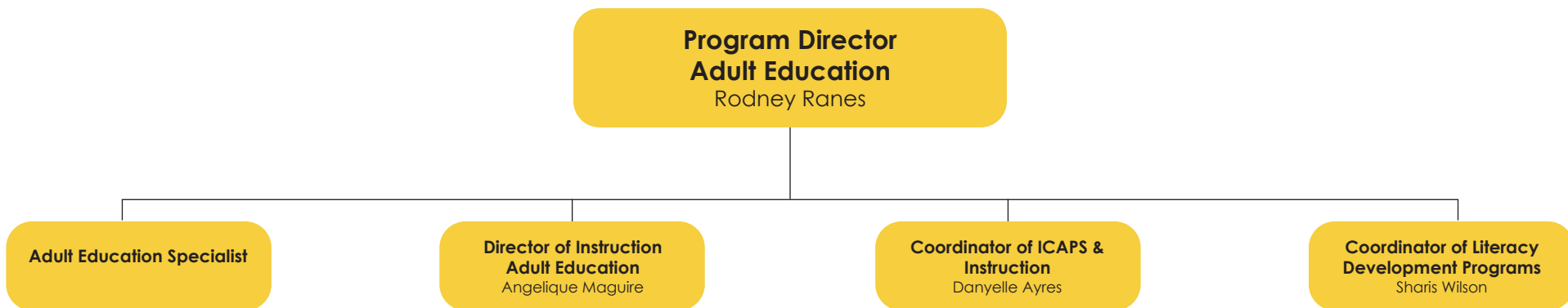


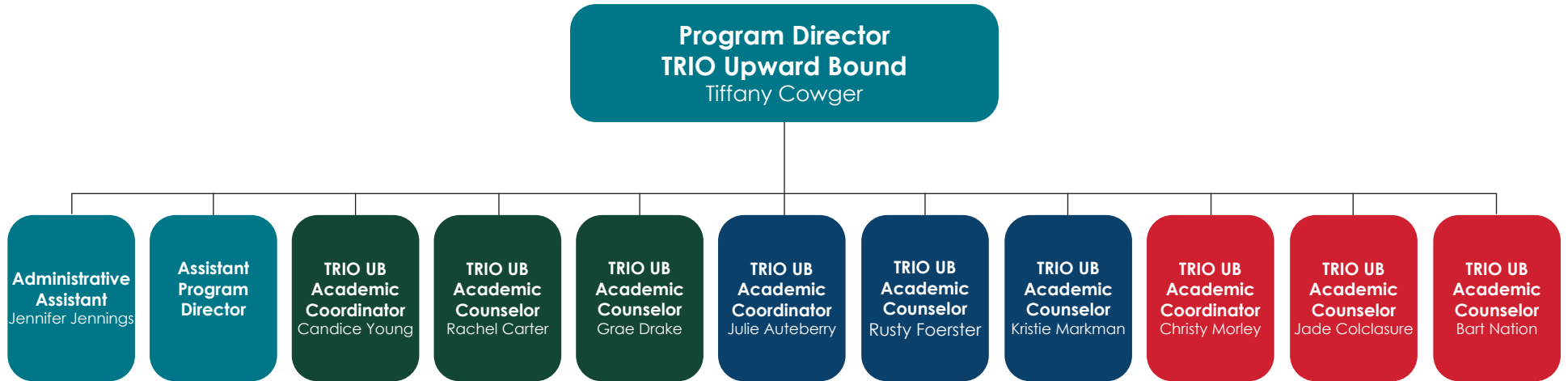
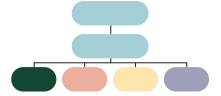


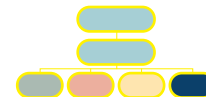












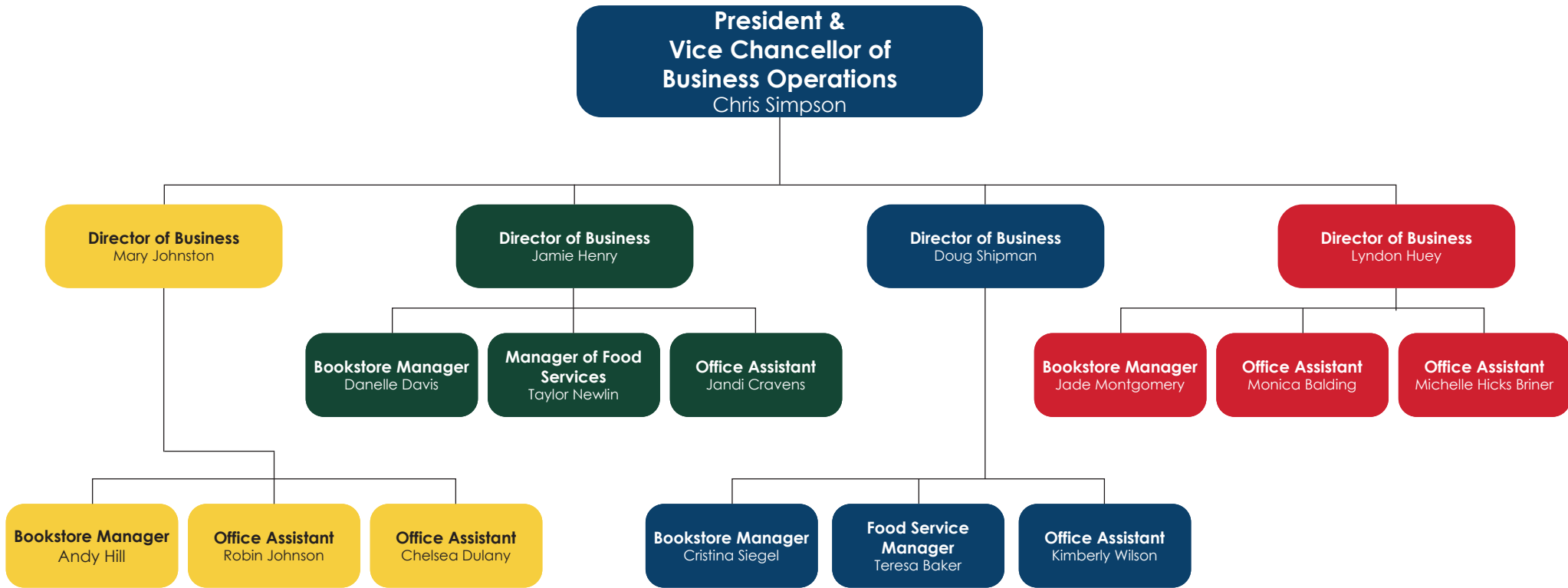
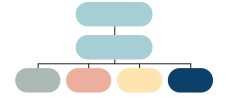
**President &
Vice Chancellor of
Business Operations**
Chris Simpson

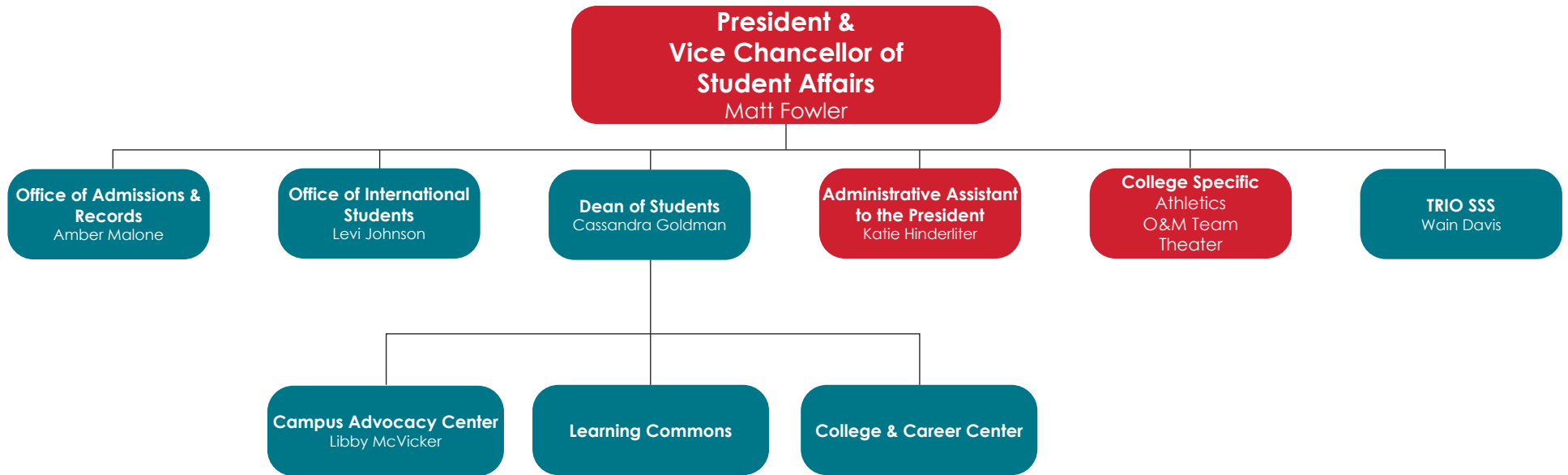
Business Offices

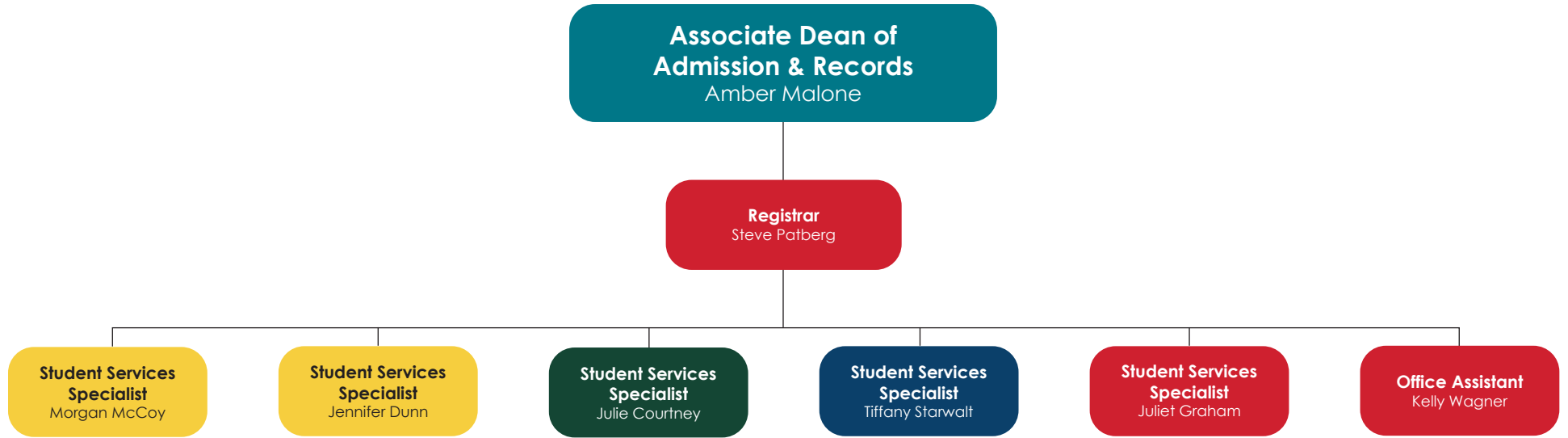
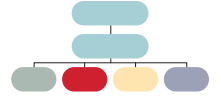
**Administrative Assistant to the
President**
Lynne Welker

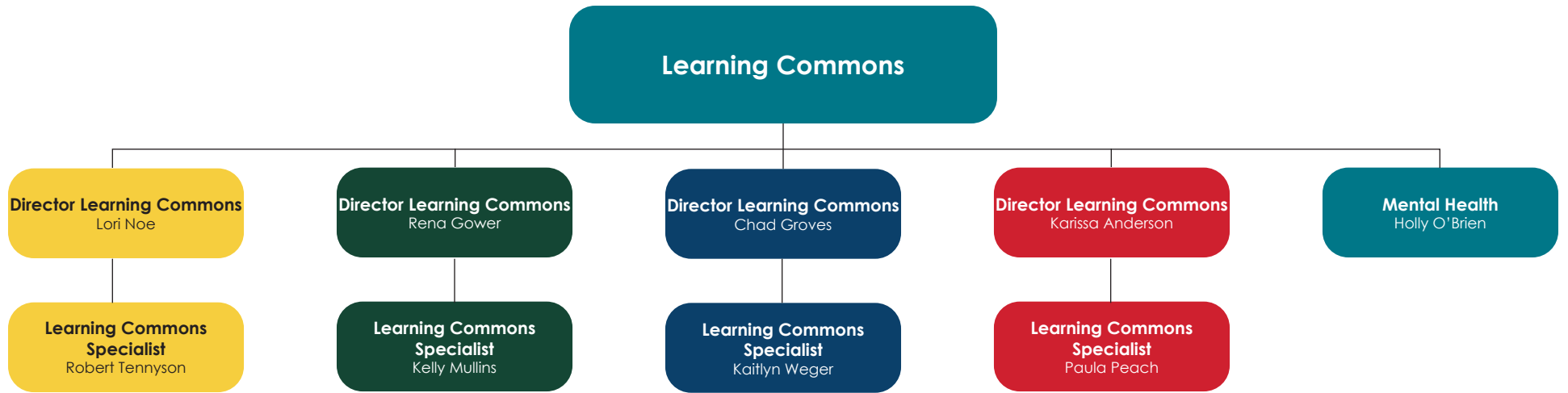
College Specific
Athletics
O&M Team
Theater

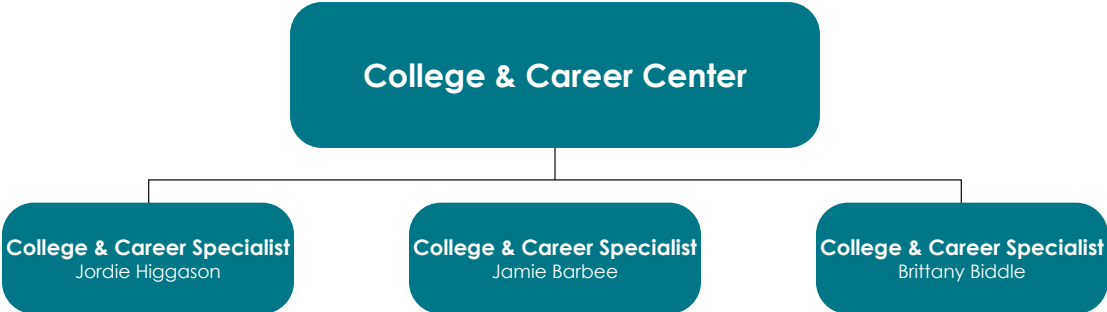
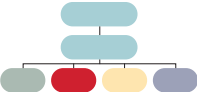


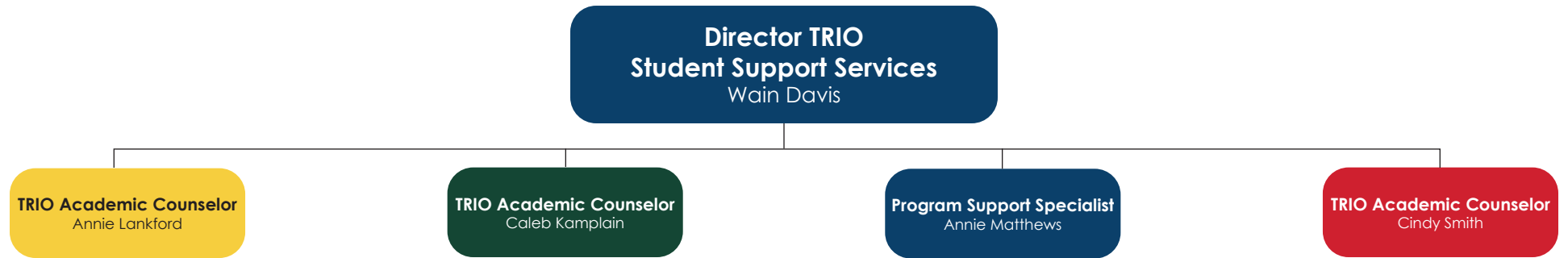












ILLINOIS EASTERN COMMUNITY COLLEGES Administrative Organizational Chart

