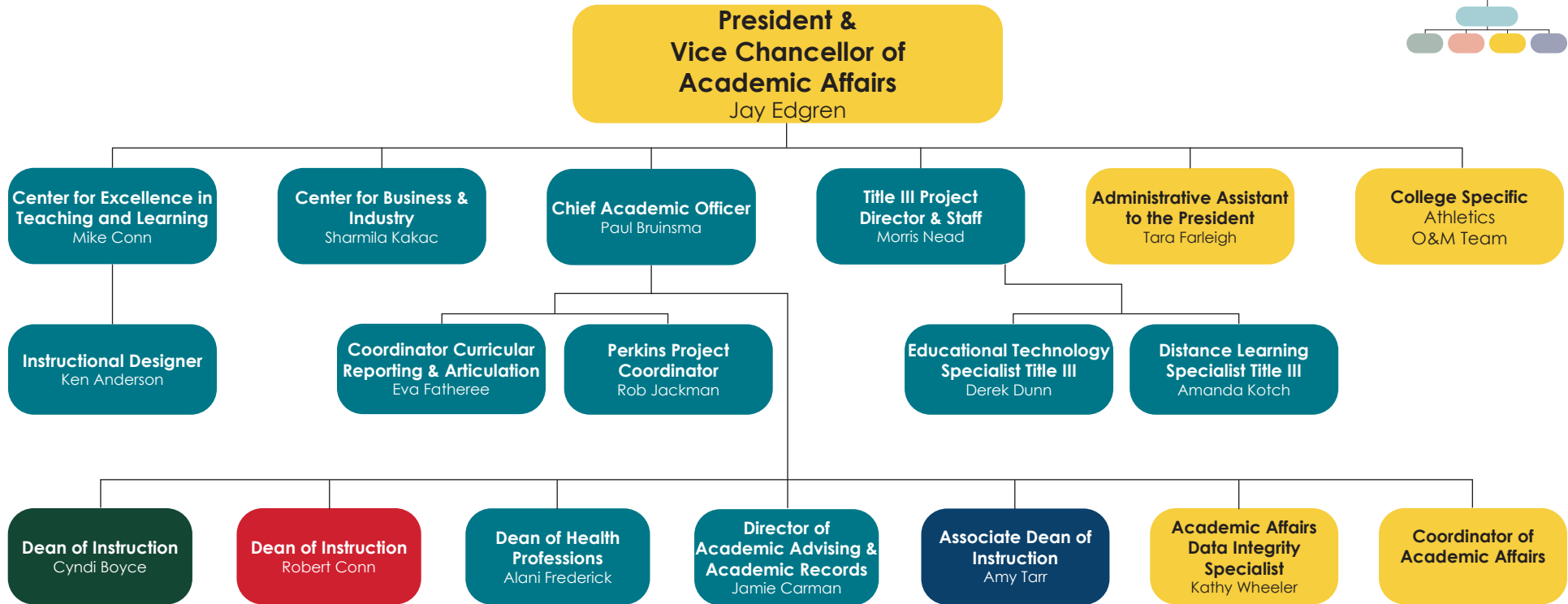
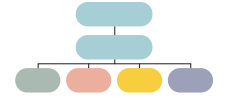
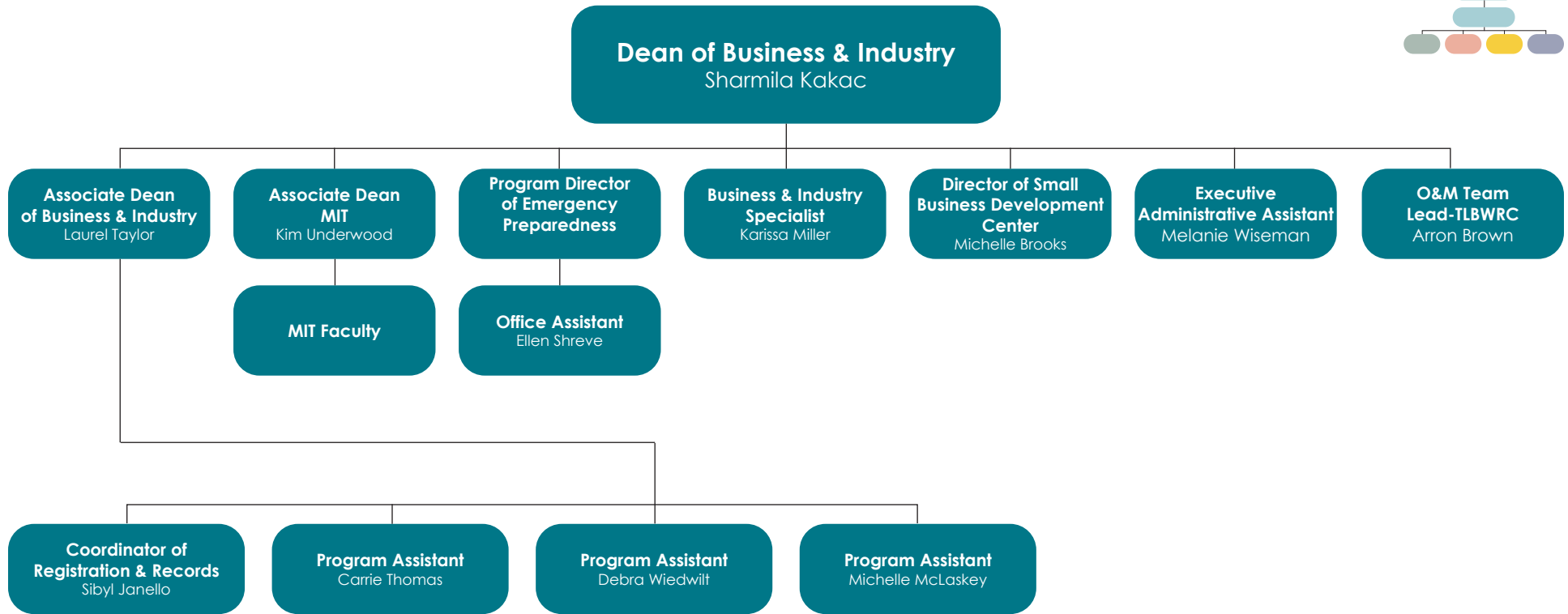
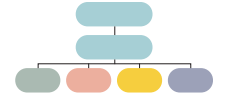


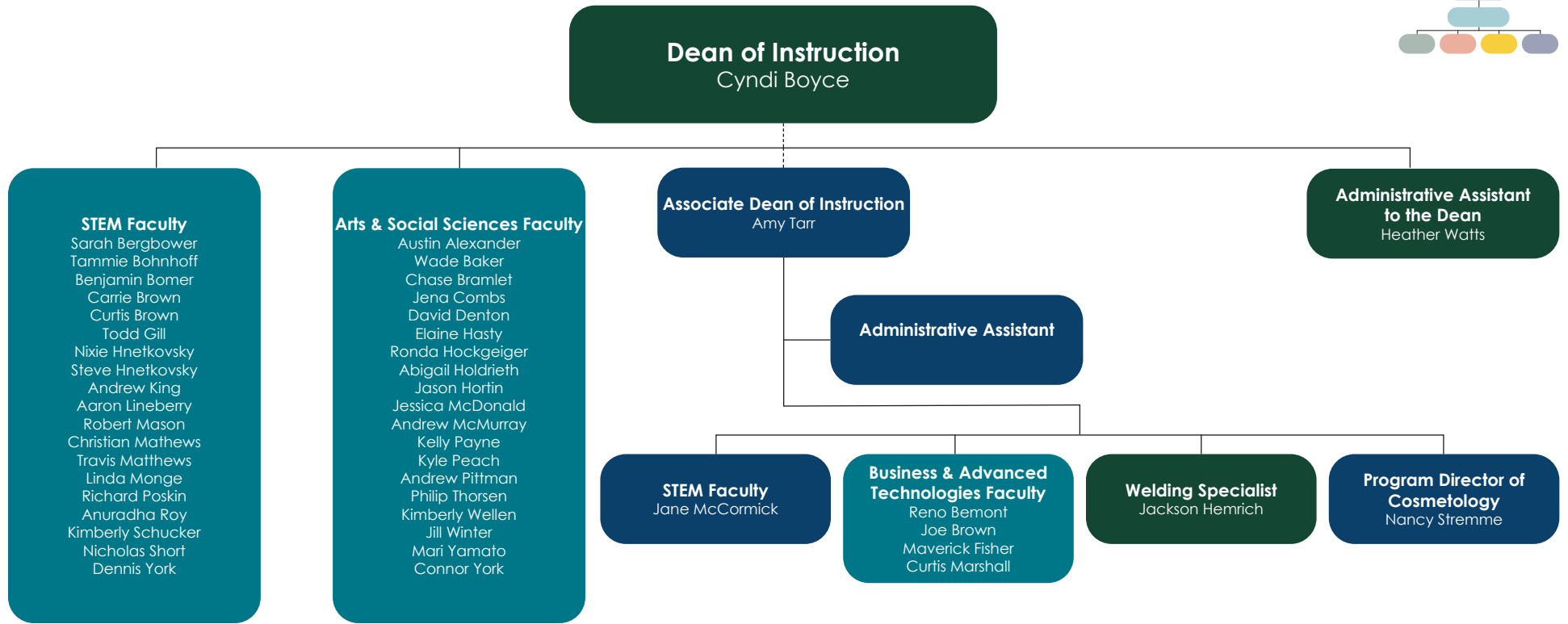
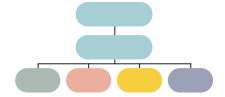
ILLINOIS EASTERN COMMUNITY COLLEGES Administrative Organizational Chart



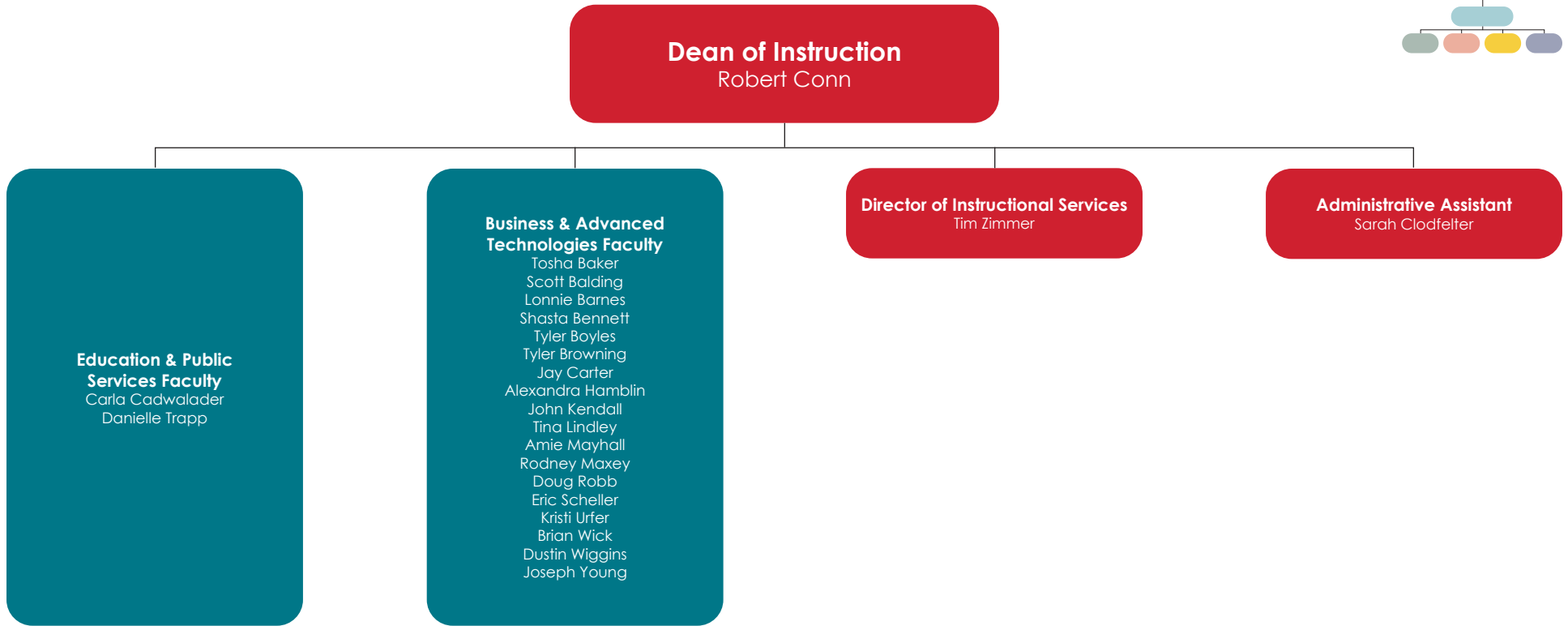
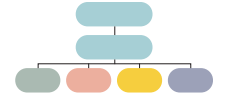
ILLINOIS EASTERN COMMUNITY COLLEGES Administrative Organizational Chart

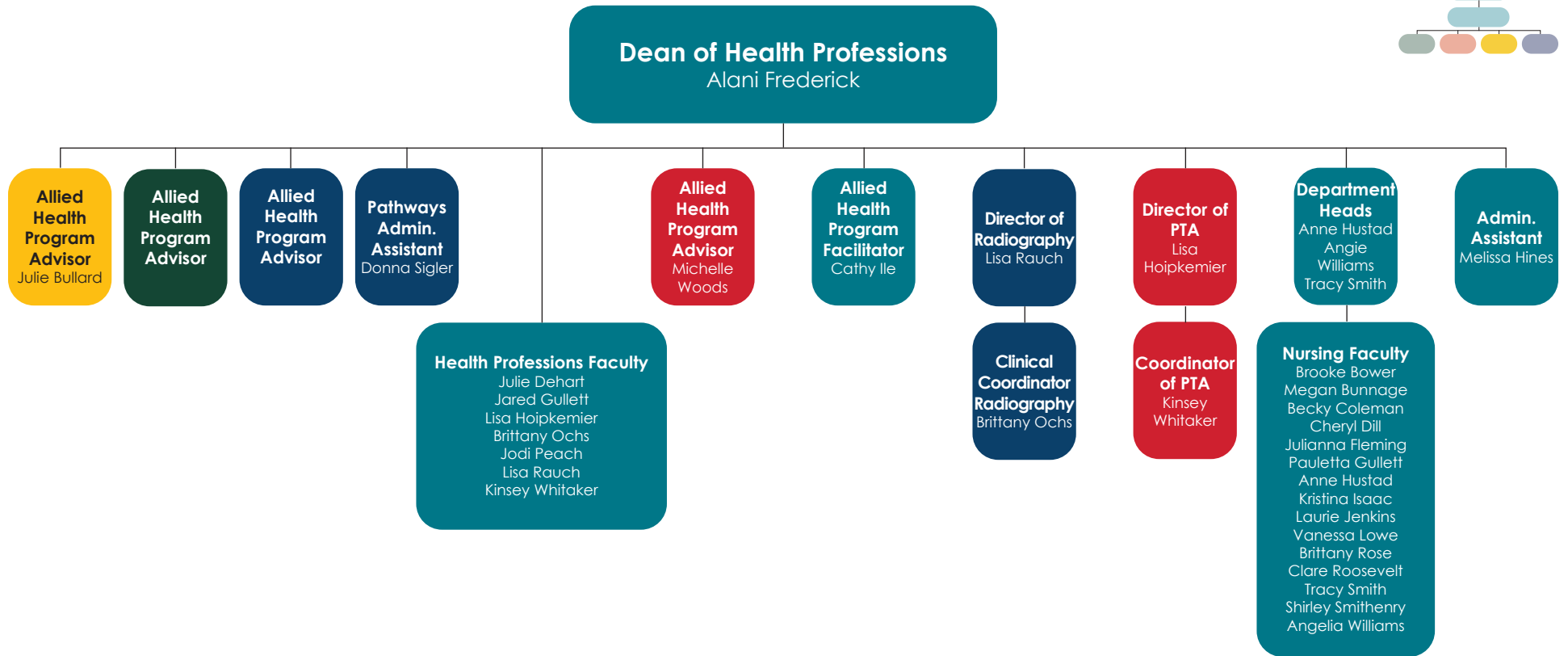
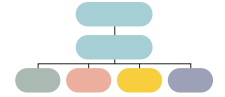


ILLINOIS EASTERN COMMUNITY COLLEGES Administrative Organizational Chart



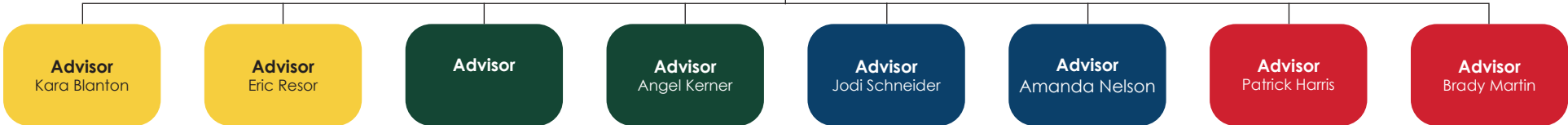
ILLINOIS EASTERN COMMUNITY COLLEGES Administrative Organizational Chart

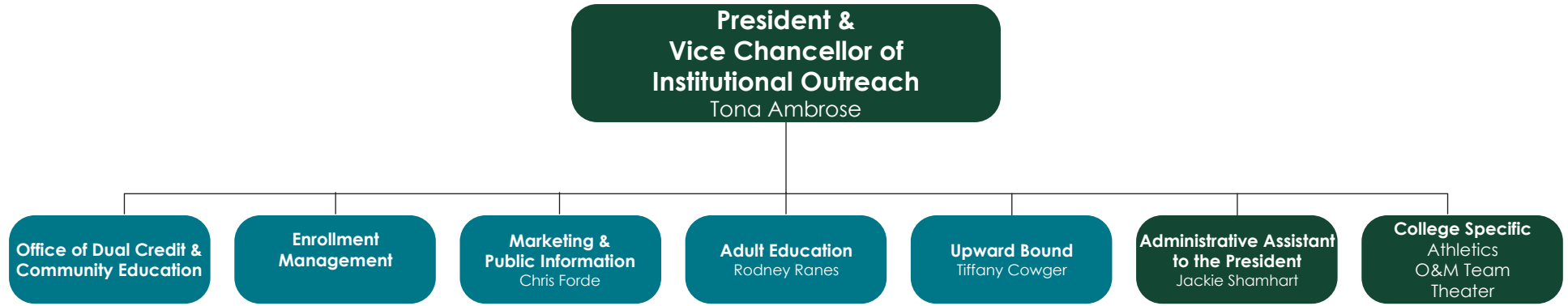
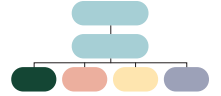


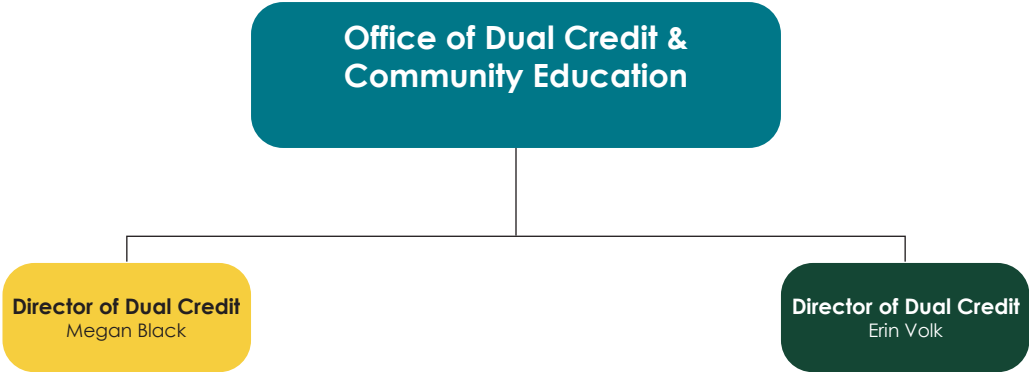
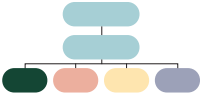


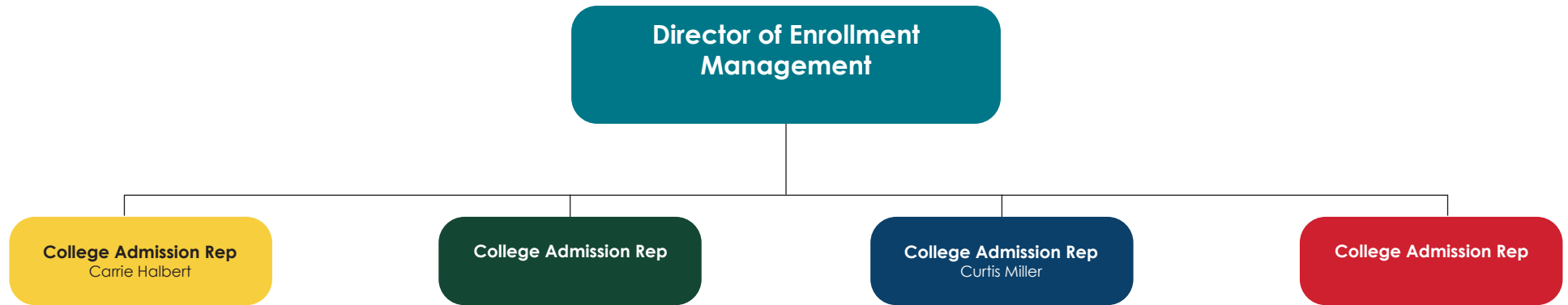
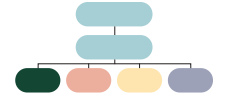


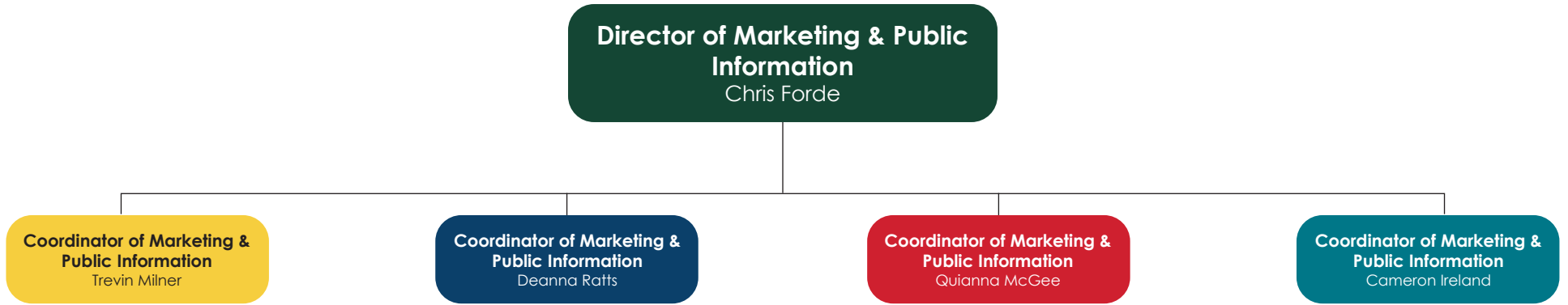
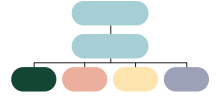
**Director of Academic Advising
and Academic Records**
Jamie Carman

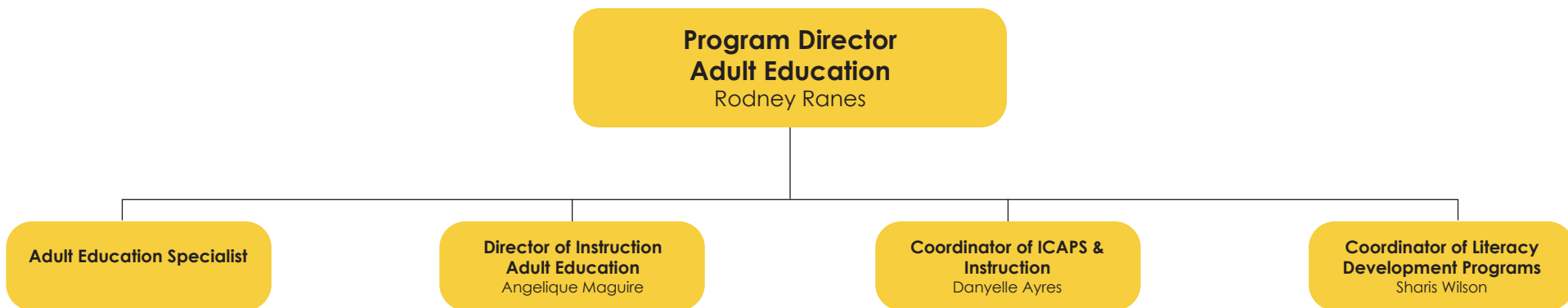


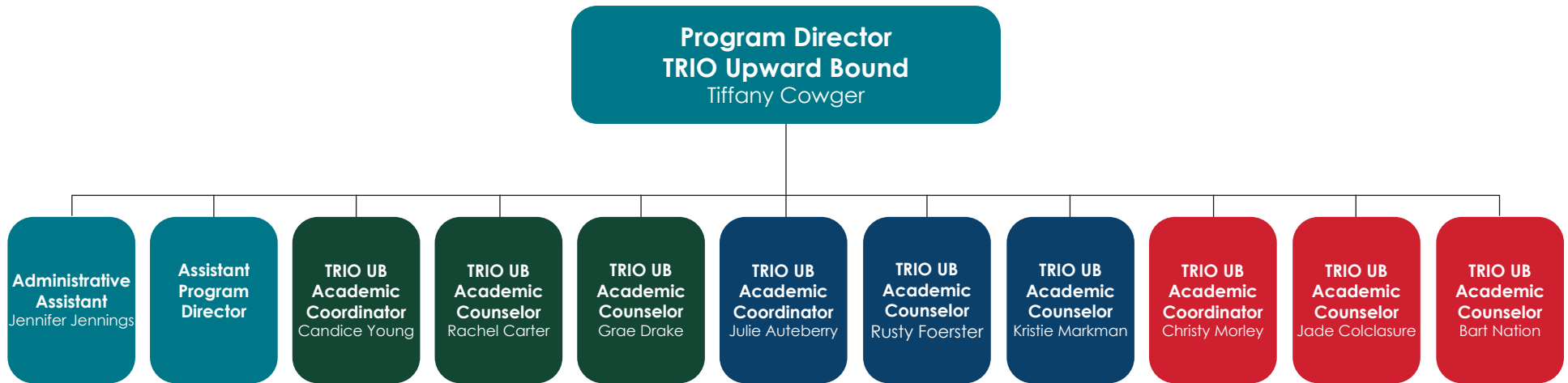


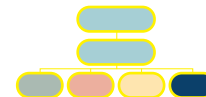












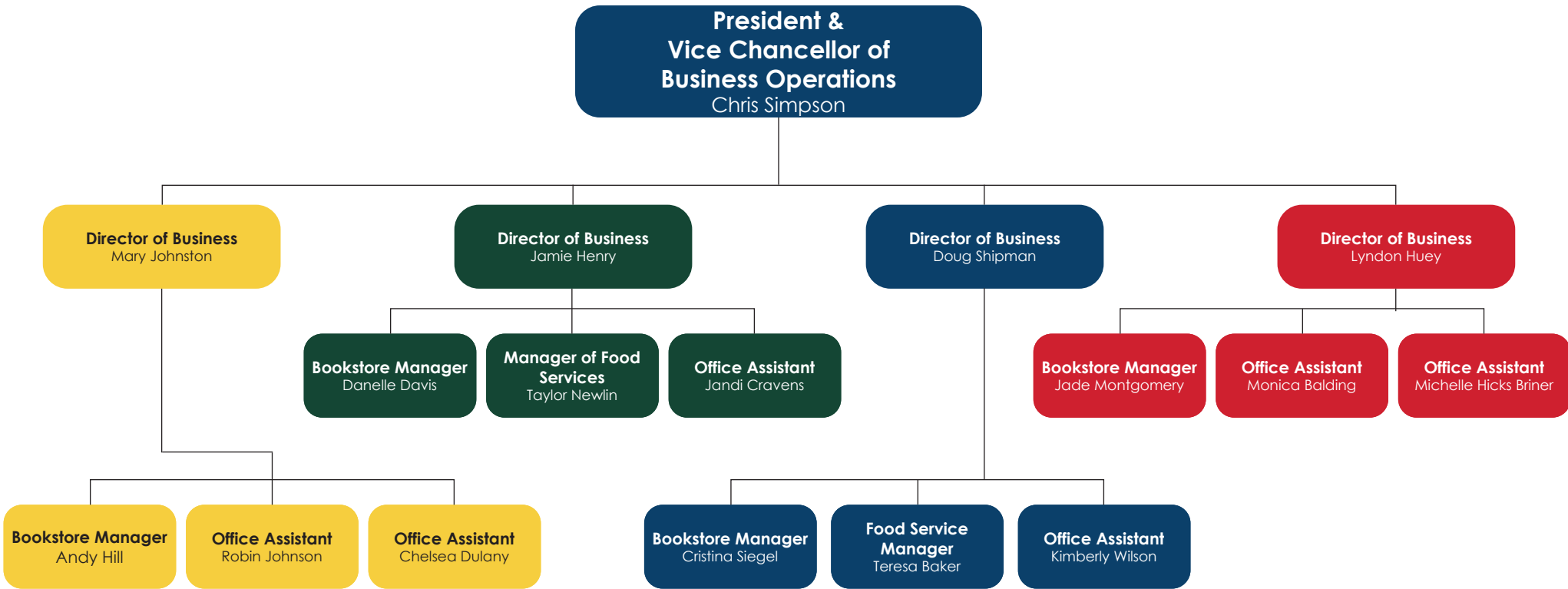
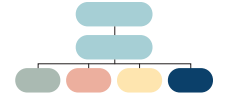
**President &
Vice Chancellor of
Business Operations**
Chris Simpson

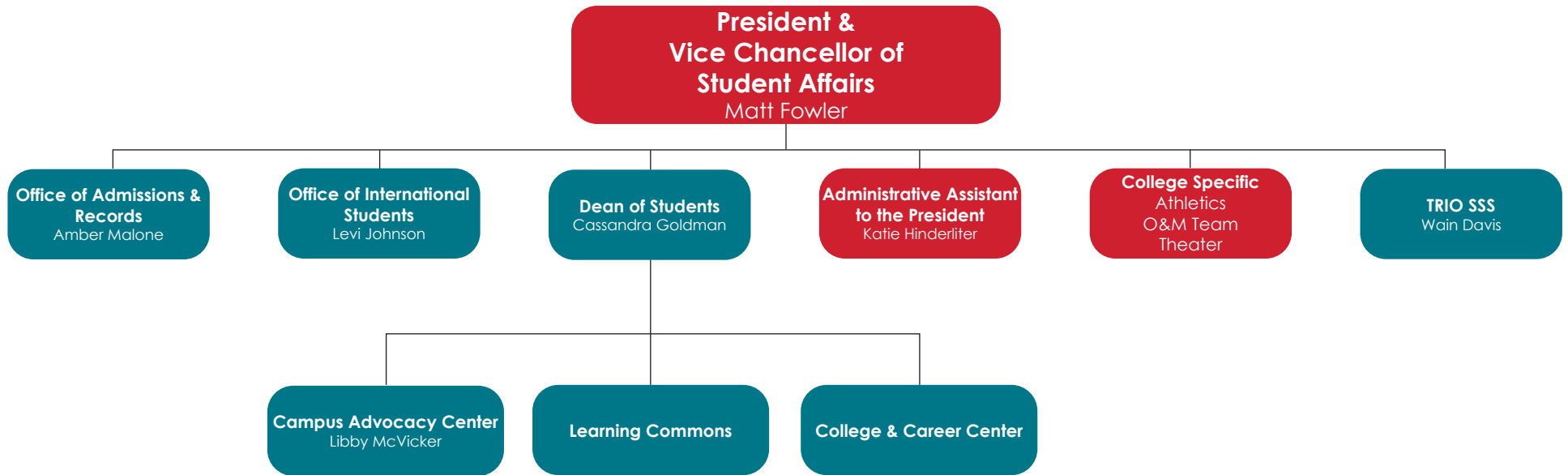
Business Offices

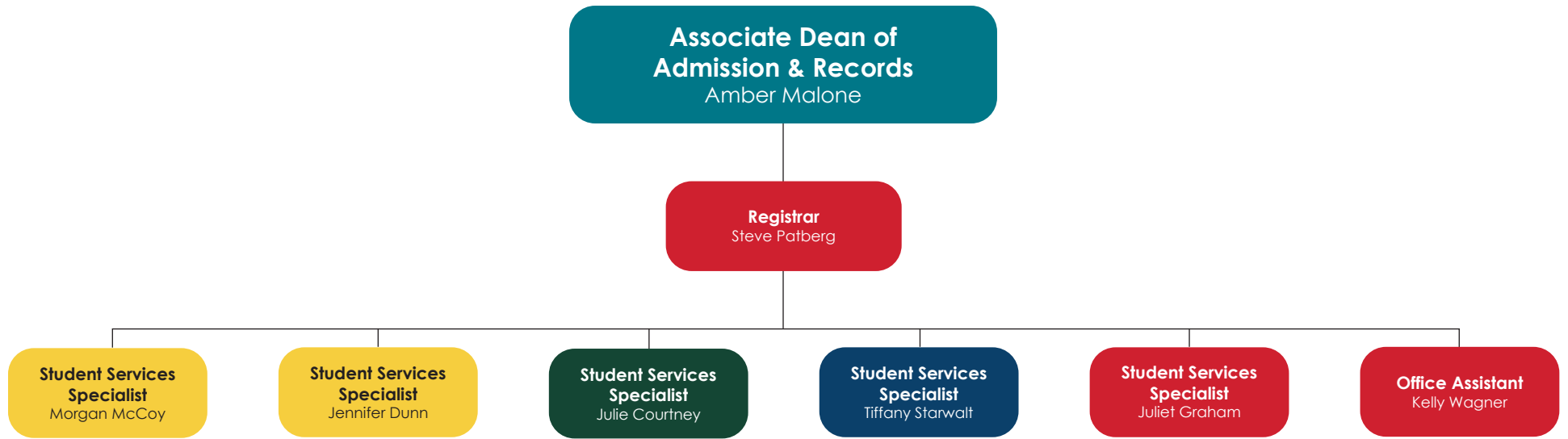
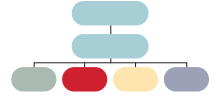
**Administrative Assistant to the
President**
Lynne Welker

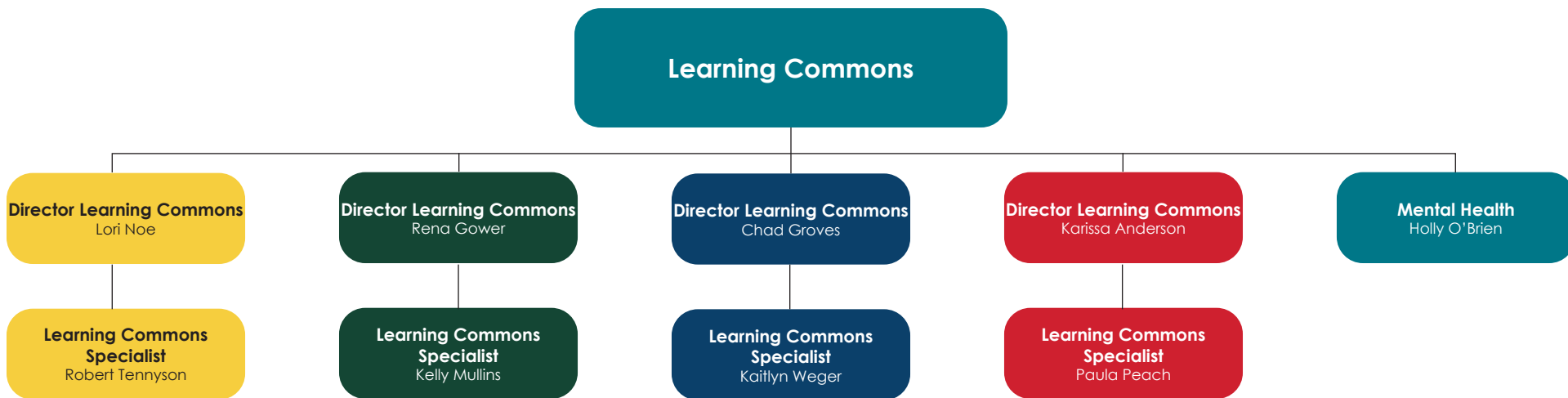
College Specific
Athletics
O&M Team
Theater



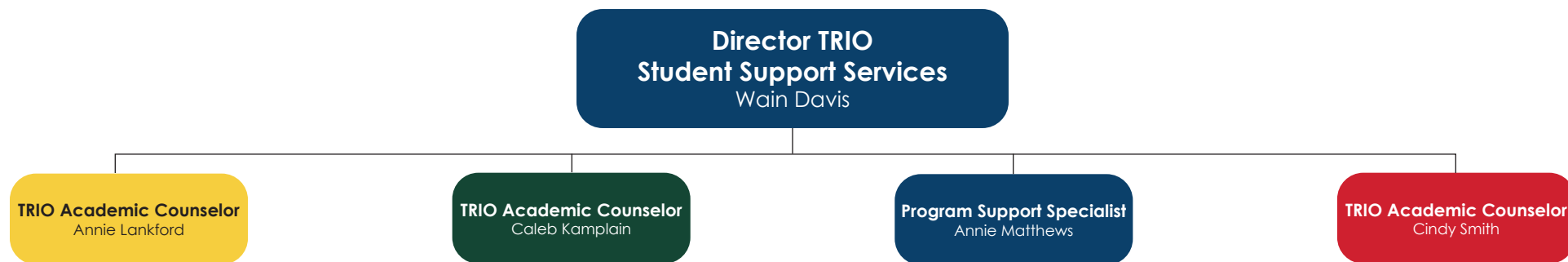












ILLINOIS EASTERN COMMUNITY COLLEGES Administrative Organizational Chart

